



# *Cowman's Kind*

**POST ROCK CATTLE COMPANY BULL AND FEMALE SALE**



**FEBRUARY 24, 2018**

**12:30 PM (CST) • Barnard, Kansas  
Post Rock Cattle Company Sale Facility**



**POST ROCK  
CATTLE**





Bill Clark 785.792.6244



Leland Clark 785.792.6208

## POST ROCK CATTLE COMPANY

Dear Fellow Cattle Producers:

Welcome to this year's edition of the "Cowman's Kind" bull & female sale. Change seems to be the only constant in life and in the cattle business. Among the changes this year is that EVERY BULL will have either LD or ultra LD GENOMIC ENHANCED EPD's and except those known by birthright every bull selling will be Homozygous Black and Homozygous Polled tested. Informed buying decisions become more important every day and we want to know and want you to know everything good or bad about the cattle selling. Unfortunately despite having the DNA samples to the lab by December 13th this information is not back in time to be in the catalog. It will be posted on MMS.bz as soon as it's available or you can call our office for an email or fax of the results. It will also be available on the supplement sheet sale day. Also new this year is we will be going to the video sale format with no animals coming thru the sale ring. A video of each animal will play on a large screen TV while they are auctioned off. Be sure to arrive early to walk thru the sale cattle in the large display pens. All cattle will be at the Post Rock sale facility in the display pens beginning Thursday evening. The make your own sandwich bar and chips are available Friday noon and the Grilled hamburger fry is available Friday evening for early arriving guests.

This year's sale offering is extremely strong. The bulls are a tremendous group and they are loaded from top to bottom in both the purebred and balancer divisions. We are offering many new AI sire groups to choose from and some of our most proven genetics sell in volume sire groups. Many of the cows who produced this bull crop have multiple generations of AI & ET mating's stacked to produce the highest quality herd sires available. Over 600 cows and many AI & ET mating's were used to produce the bulls selling this year and the sale offering reflects that level of culling and commitment. Additionally we feel the 6 year old and 2 year old females are our strongest group to date. Many of the elite, proven donors of the breed are the dam or granddam of the females selling. We are proud of each and every bull and female selling and each animal is expected to have a positive impact on their new owners' herd.

As in the past, we have bulls from our cooperator herds: Meadowlark Gelbvieh, Dawson Creek Gelbvieh, Twin Oak Gelbvieh, and Stucky Beef Genetics. Our cooperator herds allow us to increase the selection pressure placed on the bulls and they make it possible for us to offer more bulls. We share in the income from these bulls, and they are represented and guaranteed just like our bulls. Should a problem arise, you will deal with Post Rock.

We hope to assist you in increasing your profitability, as our survival in the seed stock business is based upon it. We have learned from experience that, unfortunately, we cannot spend enough time with each of you on the sale day. We encourage you to call or visit at any time prior to the sale. We look forward to seeing you February 24 at the sale.

Sincerely,  
Bill and Leland Clark

***"Where calving ease, performance and eye-appeal come together."***

**3041 E. Hwy. 284, Barnard, KS 67418 • Fax: 785.792.6250 • Email: prcc@twinvalley.net**

### DIRECTIONS TO POST ROCK CATTLE CO.

When coming from the west, exit K14 onto K284. Go east 6 miles to Barnard. Then, go east on county blacktop 4 miles, south 1 mile and, then, east 1.5 miles.

When coming from the north on US 81, exit west K41. Then, south on N 120th Road. When coming from the south on US 81, exit midway between mile marker 173 and 174. Then, go west to N 120th Road. Turn and go north on N 120th Road. From N 120th Road, turn west on Mulberry Road, 10 miles to Ada. Continue west on the blacktop. Note as you go west on Mulberry Road it changes names each time you turn a corner, but stay on the blacktop until you get to Post Rock Cattle Co.

If you will be using GPS directions please type in 3041 E Vine Street, Barnard Kansas Our GPS and mail address is not the same.

# Cowman's Kind BULL AND FEMALE SALE

**FEBRUARY 24, 2018 • 12:30 PM (CST)**  
Post Rock Cattle Company Sale Facility • Barnard, Kansas

**110 BULLS SELL • 80 FEMALES SELL**  
Gelbvieh and Balancer® • Including all six year old cows.

## SALE DAY PHONES

Ranch	785-792-6244
Bill Clark	785-392-0889
Leland Clark	785-392-0888
Chris Mitchell	334-695-1371

## AUCTIONEER

Doak Lambert

## SALE REPRESENTATIVES

Guy Peverley	Stock Exchange
Matt Caldwell	Stock Exchange
Stephen Russell	Kansas Livestock Association

## FOOD & REFRESHMENTS

Join us on Friday night for our annual hamburger fry and lunch will be served on sale day with refreshments available all day.

## SALE DAY SUPPLEMENT SHEET

Actual scrotal measurements and updated calving will be available sale day.

## SALE OFFERING VIDEOS

Visit [www.mms.bz](http://www.mms.bz) to view the sale offering videos available on the bulls and females selling.

## ONLINE INTERNET BIDDING

Visit [www.liveauctions.tv](http://www.liveauctions.tv) to register and bid live online. Buyers must pre-register to bid online.

**LiveAuctionsTV**

## TELECONFERENCE LINE

Teleconference line will be available sale day. Call Post Rock to get conference line number, pin number and get a buyer number.

## SALE HEADQUARTERS

Salina is 45 miles from the ranch and is served by most major motel chains. If you need help with accommodations, please call Post Rock Cattle Company.

## SEMEN INTEREST

RETAINING 1/3 SEMEN INTEREST IN ALL BULLS SELLING UNLESS OTHERWISE NOTED. Buyer will take 100% possession, 100% salvage value. Semen collection, if we elect to do so, will be at our expense and your convenience during the off breeding season. Should the buyer elect to collect semen on bulls, the expense and semen collected will be 100% of the buyer. At a later date, by mutual agreement, if semen sales are a possibility the mutually agreed on expenses and revenue will be split 1/3 Post Rock and 2/3 new buyer.

## ULTRASOUND

Ultra sound data was collected on all bulls selling December 30, 2017. Be sure to compare only within contemporary groups for example FALL born purebreds to Fall born Purebreds. This is covered in Detail in the ABOUT THE SALE CATTLE PAGE.

## GENOMIC ENHANCED EPD'S

ALL BULLS selling have had LD or ultra LD Genomic Enhanced EPD's test performed. Unfortunately the results were not back by the time the catalog went to print. They will be posted as soon as they are available on MMS.bz or you call our office for an email or fax copy. They will also be available on the supplement sheet sale day.

## HOMO BLACK HOMO POLLED

Expect many more bulls to be identified as HOMO BLACK & HOMO POLLED by DNA test that are not known by birthright (only ones listed in the catalog) the results will be posted as soon as available on MMS.bz or you may call our office for an email or fax. Results will also be available on the supplement sheet.

## SPRING CALVING INFORMATION

Calving information will be updated weekly and posted on MMS.bz every Friday beginning Friday February 9th or you may call our office for the weekly update as well.



### POST ROCK CATTLE COMPANY

3041 E. Hwy. 284, Barnard, KS 67418  
Bill Clark: 785.792.6244  
Leland Clark: 785.792.6208  
Fax: 785.792.6250 • Email: [prcc@twinvalley.net](mailto:prcc@twinvalley.net)

*"Where calving ease, performance and eye-appeal come together."*

**MMS**  
[www.mms.bz](http://www.mms.bz)

**SALE MANAGEMENT BY:**  
Mitchell Marketing Service  
Chris Mitchell 334-695-1371  
20180 NE Roy Golden Road  
Blountstown, FL 32424





## TERMS & CONDITIONS

### Terms

The terms of the sale are cash. Animals are to be paid for during or immediately following the sale. Each animal will be sold to the highest bidder. We have made every effort to provide as complete and accurate information as possible. However, announcements from the auction stand will take precedence over information printed in the catalog.

### Bidding

Any disputes or challenges regarding bids shall be settled by the auctioneer, and his decision shall be final. Mail or telephone bids will be handled with strictest of confidence.

### Semen Check & Guarantee

Each bull is guaranteed to settle healthy, fertile females and has been semen tested. Should any bull be claimed a non-breeder, the recommendation of the American Gelbvieh Association will apply. However, this does not preclude us from making adjustments that are mutually beneficial to both parties.

### First Breeding Season Guarantee

- If any bull purchased in the Cowman's Kind Sale or privately from Post Rock is disabled during the first 90 days following first turn out of a young bull, the following guarantee will apply.
- If your young bull is temporarily unable to complete the breeding season, if possible, Post Rock will provide you with a loaner bull without cost to you other than transportation of the bull from and back to Post Rock.
- If your bull becomes permanently disabled, Post Rock will allow full credit (\$5000 Maximum) toward the purchase of one bull in the next Post Rock sale. Post Rock will receive the salvage value of the injured bull. Should the bull you purchase cost more than your credit you pay the difference. If he costs less, no further credit is due to you.
- The above warranty is for bulls used in a single sire breeding pasture. If two or more bulls are used in a breeding pasture the warrant is reduced to 50% of the initial purchase cost.
- If you have a problem, please notify us as soon as possible since we try to keep a few bulls available in case your new Post Rock bull is disabled during the first breeding season.

### Liability

All persons attending the Cowman's Kind Sale do so at their own risk. The sale sponsors, sale manager and/or any other seller assumes no liability for accidents, theft or damages done during this event on site of Post Rock Cattle Company.

### Trich Testing

Many states have new rules for trich testing and none of the sale bulls have been tested. Should a Trich Test be required Post Rock will pay costs involved and complete the testing requirements soon following the sale.

### Female Lots

Please make arrangements to pickup all female lots within one week of the sale date. If you want Post Rock to deliver female lots delivery prices will apply. Up to 100 miles \$75.00 per lot, 101 to 300 miles \$125.00 per lot, 301 to 500 miles \$200 per lot and over 501 miles \$250.00 per lot.

### BULL Free Delivery or Free Care Until May 1

You may select your choice of the following delivery options for your bull purchases:

- Option 1-Haul your bull sale day and we will deduct \$100 per bull. We will assist you in loading out immediately following the sale.
- Option 2-We will care for your bulls free of charge but at the purchaser's risk and you pick them up any time prior to May 1. Bulls remaining at Post Rock after May 1 will be charged \$2.50 per head per day.
- Option 3-We will deliver bulls free of charge up to 300 miles with additional miles prorated per head and that cost will not exceed \$250 per lot. Purchases totaling \$20,000 or more will be delivered free of charge to an individual ranch or to a central location within your state on group purchases. For animals that we deliver you are encouraged purchase individual animal insurance that will be available sale day at the rate of 4% of the purchase price for 6 months coverage. Other rates apply for longer or shorter insured periods. Inquire at the clerks table.

### Registration Certificates

Registration certificates will be transferred on all sale lots at the seller's expense, except for those marked as unregistered or announced otherwise.

### Sight Unseen Purchases

If you are unable to attend the sale, a bull can be purchased for you on order during the auction. Please call either Bill or Leland in advance of the sale and discuss with us the price range and the type of bull you are looking for, and we will recommend the bull or bulls that will fit your needs. If you don't like the bull when he is delivered to your place, he's not yours; and the money paid will be refunded. If the bull can be purchased for less than your maximum bid, you get the bull for the amount he left the ring at, just as if you were bidding for yourself. Each year, breeders take advantage of this free service. Call if you would like more information or a reference. *For sight unseen satisfaction guarantees, you must purchase an animal that either Bill or Leland have previously recommended to fit your needs.*

### Mortality Insurance

Insurance will be available on sale day at the rate of 4% of the purchase price for 6 months coverage. Other rates apply for longer or shorter insured periods. Inquire at the clerks' table.

### TELE-AUCTION AVAILABLE

Post Rock is located in a very poor cell phone reception area and we encourage you to utilize this service. If you will be unable to attend the sale, you can do your own bidding via a conference telephone hook up that will connect you to ringside for the sale. You will be able to listen to the sale in progress, talk directly to our ringside representative and bid. Buyers interested in the option should call Bill prior to sale day at 785-792-6244. You will be given the phone number and pass code to join the tele-auction and assigned a bidder number with which to do your bidding. Your only cost will be your normal long distance charges, charged by your long distance carrier. This would work well if you have looked at the sale offering prior to sale day and for sight unseen purchases.



## ABOUT THE SALE CATTLE

### FALL BULLS

The fall bulls were weaned May 25 after being raised on their dams on milo stocks or native pasture with sorghum silage, DDG, and ammoniated wheat straw and received no creep feed. After weaning, the bulls were raised on a rotational grazing system on sedan grass with supplementation of Purina Feeds acu-ration and 8 lbs. of corn per day. On 9/18/17, they were switched to a ration of silage, wet distillers, 1 lb. of corn per 100 lbs. of body weight, ammoniated wheat straw, and grinding-quality alfalfa hay.

### SPRING BULLS

Spring bulls were raised on their dams on native pasture and received no creep. They were weaned August 10 and were placed on a gain test on 9/12/2017 through 12/30/2017 on a ration of sorghum silage, wet distillers, 1 lb. of corn per 100 lbs. of body weight, ammoniated wheat straw, grinding quality alfalfa hay, and a vitamin mineral pack on a ration designed for 3.25 pounds of gain per day.

### ULTRASOUND

All bulls selling were ultrasound-measured on 12/30/2017. The spring bulls were ratio'd in as large of contemporary groups as possible for the purebred and balancer groups. However, bulls from time to time were not in a contemporary group and therefore don't have a ratio—only an actual measurement. This data was collected by a CUP certified technician, and all data was submitted to the AGA. The fall bulls were too old for data submission, and all data is actual measurements collected by the same certified technician but was a chute side reading only.

The fall purebred and Balancer group were ratio'd against each other. This would include ET bulls and all bulls from all co-operators as they have all been handled the same for over 6 months. As with all raw data, comparisons must be made only within and not between contemporary groups. As an example, compare only spring Balancers to spring Balancers and spring purebreds to spring purebreds. You'll notice a large difference between the fall bulls data & the spring bull data even though many of the same sires are represented in both groups. This was due to the way the bulls were developed and the timing of the ultrasound measurements. Most of the fall bulls were over 365 days old and were adjusted back with decreased rib eye

size considerably while the spring bulls were more typically measured at 11 months of age with a small adjustment up to 1 year of age. If you've followed our program you'll realize in the past 5 to 7 years we have greatly increased our selection pressure on marbling both from an EPD sire selection stand point as well as actual measurements. You'll find many bulls with top 10 to 25% marbling genetics with the data to back it up without sacrificing our 30 plus year goal of "WHERE CALVING EASE, PERFORMANCE AND EYE APPEAL COME TOGETHER."

### SALE COWS

As in the past, our sale group of females includes all our sound six year olds and approximately 20 two year old heifers, most with calves at side. This year's sale group is really strong and includes more top-end cows and is from top to bottom our strongest, most consistent group to date. In my mind, there are at least six cows that deserve to be in donor programs and they have earned that right from their exceptional production. In addition, there are more cows that every ranch needs more of. Cows that get bred every year bring in a calf in the top half of their contemporary group and have high quality udders and the added look and eye appeal we demand.

The two year old sale heifers are selected as a cross-section of our two year olds. Any cow that has at least two daughters in the herd that has an additional daughter is available as a sale heifer as well as any heifer that we have a large number of from their cow family and sire group. These two year olds are handled exactly like the heifers we retained and haven't received any additional supplementation to fatten them up for the sale. We feed no grain to our heifers after weaning—only ammoniated wheat straw, sorghum silage, wet distillers, and grinding quality alfalfa hay. Three weeks prior to AI, as virgin heifers, they receive 2 lbs. of corn for fleshing them up for AI breeding, and this is the only grain they ever receive during their development.

All females bred or exposed greater than 100 days have been pregnancy checked and expected to calve consistent with their respective breeding dates or pasture exposure listed in the catalog. The fall calving cows selling with calf at side have been pasture exposed since calving but sell only as exposed but not guaranteed safe in calf.

## DEFINITIONS FOR DATA IN SALE BOOK

### INFORMATION ABOUT THE BULLS

Our catalog contains a great deal of information, weights and measurements. To clarify the information, please remember that all Scrotal Measurements are actual measurements. Birth Weights are actual weights taken at birth. Weaning and yearling weights are adjusted to 205 days and 365 days respectively.

<b>BW</b>	=	Actual Birth Weight
<b>WW</b>	=	Adjusted Weaning Weight
<b>YW</b>	=	Adjusted Yearling Weight
<b>REA</b>	=	Ultrasound Rib Eye Area, adjusted or actual as noted
<b>IMF</b>	=	Ultrasound Intramuscular Fat, adjusted or actual as noted
<b>FAT</b>	=	Ultrasound Rib Fat, adjusted or actual as noted

### EPDs IN THE SALE BOOK

<b>CED</b>	=	Epd for Calving Ease Direct	<b>CEM</b>	=	Epd for Calving Ease Maternal
<b>BW</b>	=	Epd for Birth Weight	<b>YG</b>	=	Epd for Yield Grade
<b>WW</b>	=	Epd for Weaning Weight	<b>CW</b>	=	EPD for Carcass Weight
<b>YW</b>	=	Epd for Yearling Weight	<b>REA</b>	=	EPD for Rib Eye Area
<b>MK</b>	=	Epd for Milk	<b>MB</b>	=	EPD for Marbling
<b>TM</b>	=	Epd for Total Maternal	<b>FPI</b>	=	Feeder Profit Index

**Genomic EPDs:** Genomic EPD's for all bulls will be on mms.bz when the tests have been completed.

**\$Cow:** Represents the genetic value in dollars of profit of an animal when retained as a replacement female relative to other animals in the herd. A higher number represents more profitable genetics for maternal productivity. \$Cow will serve producers in selecting bulls that will sire daughters with stayability and reproductive efficiency as well as other traits that lead to profitability in a production system, such as milk, calving ease, moderate mature weight and the ability of calves to gain. A female's genetics also influence the performance of her calves in the feedlot and at slaughter, so traits such as feed efficiency and carcass value are also included in \$Cow.

**Feeder Profit Index (FPI):** An economic selection index designed to aid producers in selecting sires whose progeny will perform in the feedlot and are sold on grade and yield. Well ranking sires for FPI have higher marbling and carcass weight than their contemporaries. As a terminal index, little emphasis is put on maternal traits such as stayability and calving ease.

**Efficiency profit index (EPI):** An economic selection index developed to aid producers in selecting for more feed efficient cattle that still have acceptable amounts of gain. The EPI provides slight negative pressure on intake, while keeping gain at a constant value. By selecting on this index, producers will be able to find those animals that gain the same amount as their contemporaries while eating less.





TOG TWIN OAK ASTRONAUT 530D ET • Sells as Lot 1.

1	TOG TWIN OAK ASTRONAUT 530D ET
Purebred 94% Gelbvieh Bull	Homozygous Black Homozygous Polled
8/5/2016	TOG 530D 1369727

JKGF FUTURE INVESTMENT X037										
DCSF POST ROCK ASTRONAUT 157A										
DCSF POST ROCK ELBA 50U2										
FHG FLYING H EXCLUSIVE										
CCRO MS C-CROSS EC / 7309T										
FHG CAROLINA MS 3661L 5124R										
CED	BW	WW	YW	MK	TM	CEM	YG	CW	REA	MB
11	1.1	62	92	25	58	6	-0.55	26	0.47	0.13
BW	Adj. WW	Adj. YW	Act. REA	Act. IMF	Act. Fat					
85	723	1293	17.99	3.5	0.23					

- Outstanding PB Herd sire prospect
- 144 Marbling 112 REA ratio's on ultra sound
- Top 30% calving Ease combined with top 3% MB and YW ranks in the 60th percentile
- High Weaning weight bull that ranked number 1 compared to the other 15 ET calves in his group



CCRO MS C-CROSS EC / 7309T • Dam of Lots 1, 2.

Post Rock Cattle Co. and Twin Oak Gelbvieh joined forces to purchase the 7309T "The Carcass Cow" donor in the fall of 2013 from C Cross Cattle. She remains one of the most sought after and all time high selling females in the Gelbvieh breed at \$25,000.

7309T is a homozygous black Homozygous polled 94% purebred who's genomic enhanced EPD's as of February 1, 2018 put her marbling EPD at 0.47 with 59% acc. This is off the charts and several deviations from the 0.17 top 1% of active dams and the -0.19 for breed average among active Gelbvieh dams. The "Carcass Cow" EPD's also ranks her in the top 5% for Calving Ease, top 15% for low Birth, 30% for Yearling Weight, 2% for Yield Grade, 3% for Rib Eye Area and 1% FPI and 10% \$Cow. Her ultra sound data and actual progeny data consistently back up her exceptional EPD profile. Her first son is Carolina Exclusive by Post Rock Silver. He has gained notoriety as an AI sire for producing many stout made, high performing, high carcass value sons which includes two sons who have been named National Champions in Denver. Several other sons are now serving in some of the most respected programs in the breed. No doubt some of them, some from within the pages of this year's catalog and some from her future production will surface as the Elite AI sires and breeding pieces to lead the Gelbvieh breed forward with Homozygous polled genetics that excel in carcass traits with calving ease performance and sacrifice nothing for phenotypic excellence.





TOG TWIN OAK ASTRONAUT 535D ET • Sells as Lot 2.



DCSF POST ROCK ASTRONAUT 157A • Sire of Lots 1,2.

## 2 TOG TWIN OAK ASTRONAUT 535D ET

Purebred 94% Gelbvieh Bull	Homozygous Black	Homozygous Polled
8/7/2016	TOG 535D	1369732
JKGF FUTURE INVESTMENT X037		
DCSF POST ROCK ASTRONAUT 157A		
DCSF POST ROCK ELBA 50U2		
FHG FLYING H EXCLUSIVE		
CCRO MS C-CROSS EC / 7309T		
FHG CAROLINA MS 3661L 5124R		

CED	BW	WW	YW	MK	TM	CEM	YG	CW	REA	MB
11	1.1	62	92	25	58	6	-0.55	26	0.47	0.13
BW	Adj. WW	Adj. YW	Act. REA	Act. IMF	Act. Fat					
86	611	1127	16.21	3.15	0.28					

- Outstanding PB herd sire prospect
- 130 Marbling 101 REA ratio's on ultra sound
- Raised on a poorer recip but has come on strong since weaning to develop into an elite herd sire prospect
- Top 30% Calving Ease combined with top 3% MB and YW Ranks in the 60TH percentile

## VIDEO AUCTION

Cowman's Kind 2018 production sale is changing to video auction procedure in the sale barn at Post Rock Cattle Co. All bulls and females will be viewed on large screen TV's inside the sale barn as each respective animal sells. All cattle will be displayed for viewing in the same pens as in past years. Please allow time in the pens to view the sale offering as they will not come to the sale ring.



# Cowman's Kind FALL PUREBRED GELBVIEH BULLS



DMS STUCKYS SPACE COWBOY ET • Sells as Lot 3.



DCSF POST ROCK P BUILT 332D2ET ET • Sells as Lot 6.

## 3 DMS STUCKYS SPACE COWBOY ET

Purebred 94% Gelbvieh Bull      Homozygous Black      Homozygous Polled  
9/19/2016      DMS DAR27D      1378392

JKGF FUTURE INVESTMENT X037  
DCSF POST ROCK ASTRONAUT 157A  
DCSF POST ROCK ELBA 50U2  
XXB TITUS 880K  
DARC P401  
SLGB MISS POWER LINE

CED	BW	WW	YW	MK	TM	CEM	YG	CW	REA	MB
8	2.1	64	91	22	56	6	-0.48	27	0.22	-0.26
BW		Adj. WW		Adj. YW		Act. REA		Act. IMF		Act. Fat
78		682		1156		16.41		2.67		0.3

- 110 IMF 102 REA ratio's on ultra sound
- Out of the donor dam DARCI who's the only cow to have 2 futurity champions
- Herd sire prospect look him up

## 5 BDCG DC 401D2ET ET

Purebred 94% Gelbvieh Bull      Homozygous Black      Homozygous Polled  
9/3/2016      BDCG 401D2      1390520

JKGF FUTURE INVESTMENT X037  
DCSF POST ROCK ASTRONAUT 157A  
DCSF POST ROCK ELBA 50U2  
XXB TITUS 880K  
DARC P401  
SLGB MISS POWER LINE

CED	BW	WW	YW	MK	TM	CEM	YG	CW	REA	MB
8	2.1	64	91	22	56	6	-0.48	27	0.22	-0.26
BW		Adj. WW		Adj. YW		Act. REA		Act. IMF		Act. Fat
82		644		1138		15.72		2.23		0.48

- Flush brother to lot 3 & 4
- Member of a very successful flush of some the great PB genetics available
- Breed leading genetics

## 4 DMS STUCKYS DARC VADER ET

Purebred 94% Gelbvieh Bull      Homozygous Black      Homozygous Polled  
9/17/2016      DMS DAR26D      1378391

JKGF FUTURE INVESTMENT X037  
DCSF POST ROCK ASTRONAUT 157A  
DCSF POST ROCK ELBA 50U2  
XXB TITUS 880K  
DARC P401  
SLGB MISS POWER LINE

CED	BW	WW	YW	MK	TM	CEM	YG	CW	REA	MB
8	2.1	64	91	22	56	6	-0.48	27	0.22	-0.26
BW		Adj. WW		Adj. YW		Act. REA		Act. IMF		Act. Fat
76		734		1259		13.92		2.03		0.37

- High performing bull of the DARCI X Astronaut flush
- Among the last of the DARCI donor progeny take advantage of her proven track record
- Breed leading genetics

## 6 DCSF POST ROCK P BUILT 332D2ET ET

Purebred 88% Gelbvieh Bull      Red      Double Polled  
10/4/2016      DCSF 332D2      1390886

JRI TOP PRODUCER 282Z3  
DCSF POST ROCK POWER BUILT 37B8  
DCSF POST ROCK WILMA 298Z8 ET  
MRCO NEW DIRECTION 905  
DCSF POST ROCK TWILA 223M2  
DCSF POST ROCK TWILA 3F2

CED	BW	WW	YW	MK	TM	CEM	YG	CW	REA	MB
10	-0.1	66	93	37	70	6	-0.41	24	0.28	-0.18
BW		Adj. WW		Adj. YW		Act. REA		Act. IMF		Act. Fat
80		585		1290		17.65		1.92		0.28

- One the best Red herd sire prospects we've raised
- Elite ET marriage of some of the best Gelbvieh genetics
- 110 REA ratio on ultra sound
- His recip dam died at 4 months and he finished raising himself with no creep





## 7 DCSF POST ROCK ASTRONAUT 301D8

Purebred 88% Gelbvieh Bull Double Black Homozygous Polled  
9/5/2016 DCSF 301D8 1387220

JKGF FUTURE INVESTMENT X037

DCSF POST ROCK ASTRONAUT 157A

DCSF POST ROCK ELBA 50U2

JRI TOP PRODUCER 282Z3

POST POST ROCK WILMA 340B8

DCSF POST ROCK WILMA 294Z8 ET

\$COW	75.3
FPI	62.39
EPI	64.81

CED	BW	WW	YW	MK	TM	CEM	YG	CW	REA	MB
9	1.6	62	94	24	58	4	-0.32	28	0.35	-0.08
BW	Adj. WW	Adj. YW	Act. REA	Act. IMF	Act. Fat					
0	565	1185	17.61	3.09	0.38					

- Dam was the 2016 Supreme champion breed and owned female at JR National for Meredith
- Outstanding Herd sire on his own merits look him up
- 127 IMF 110 REA ratio on ultra sound



DCSF POST ROCK ASTRONAUT 301D8 • Sells as Lot 7.

## 8 DCSF POST ROCK ASTRONAUT 341D1

Purebred 94% Gelbvieh Bull Double Black Double Polled  
10/5/2016 DCSF 341D1 1387243

JKGF FUTURE INVESTMENT X037

DCSF POST ROCK ASTRONAUT 157A

DCSF POST ROCK ELBA 50U2

MCFC MIDDLE CREEK STAR 10S ET

DCSF PST ROCK BLKBIRD 317Y2

DCSF POST ROCK BLKBIRD 216T1

\$COW	66.71
FPI	58.35
EPI	52.57

CED	BW	WW	YW	MK	TM	CEM	YG	CW	REA	MB
7	3.5	66	95	29	63	8	-0.41	30	0.42	-0.23
BW	Adj. WW	Adj. YW	Act. REA	Act. IMF	Act. Fat					
90	615	1218	17.77	2.34	0.35					

- Outstanding dam with a 107 nursing ratio on 4 calves
- Ratio's 104 WW 101YW as an individual
- These Astronaut sons are full of meat and muscle with the look of herd sires

## 9 DCSF POST ROCK ASTRONAUT 333D1

Purebred 94% Gelbvieh Bull Double Black Homozygous Polled  
10/7/2016 DCSF 333D1 1387240

JKGF FUTURE INVESTMENT X037

DCSF POST ROCK ASTRONAUT 157A

DCSF POST ROCK ELBA 50U2

DCSF POST ROCK TOP BRASS ET

DCSF POST ROCK WILMA 219T1

DCSF POST ROCK WILMA 262R1 ET

\$COW	86.71
FPI	57.72
EPI	75.32

CED	BW	WW	YW	MK	TM	CEM	YG	CW	REA	MB
8	3.3	66	95	30	64	7	-0.4	30	0.3	-0.29
BW	Adj. WW	Adj. YW	Act. REA	Act. IMF	Act. Fat					
92	624	1190	14.42	2.65	0.29					

- Outstanding dam ratio 109 WW 103 YW on 8 calves
- 109 IMF ratio on ultra sound
- Really good bull from a top cow and cow family

## 10 DCSF POST ROCK ASTRONAUT 358D1

Purebred 94% Gelbvieh Bull Double Black Homozygous Polled  
10/27/2016 DCSF 358D1 1390905

JKGF FUTURE INVESTMENT X037

DCSF POST ROCK ASTRONAUT 157A

DCSF POST ROCK ELBA 50U2

JRI GREAT WESTERN 254N68 ET

DCSF POST ROCK GWEN 130X1 ET

DCSF POST ROCK GWEN 33P1 ET

\$COW	73.96
FPI	60.59
EPI	84.3

CED	BW	WW	YW	MK	TM	CEM	YG	CW	REA	MB
10	2.2	70	103	27	61	7	-0.32	30	0.41	-0.32
BW	Adj. WW	Adj. YW	Act. REA	Act. IMF	Act. Fat					
86	668	1370	15.22	1.6	0.43					

- Awsome dam has had 3 sons sell in the top 10 selling bulls in past sales
- Dam ratio's 99BW 104WW 105YW 107REA and 100IMF on 5 calves
- Posted 112WW and 108 YW ratio's as an individual

## 11 DCSF POST ROCK ASTRONAUT 344D2

Purebred 94% Gelbvieh Bull Double Black Double Polled  
10/17/2016 DCSF 344D2 1387244

JKGF FUTURE INVESTMENT X037

DCSF POST ROCK ASTRONAUT 157A

DCSF POST ROCK ELBA 50U2

DCSF POST ROCK SILVER 233U1

DCSF POST ROCK WINNIE 246Z2 ET

DCSF POST ROCK WINNIE 11N2

\$COW	81.23
FPI	58.66
EPI	93.9

CED	BW	WW	YW	MK	TM	CEM	YG	CW	REA	MB
8	3.7	68	101	25	63	5	-0.3	40	0.36	-0.24
BW	Adj. WW	Adj. YW	Act. REA	Act. IMF	Act. Fat					
88	547	1085	13.76	2.48	0.27					

- Dam sells as lot 176
- 102 IMF ratio on ultra sound
- Built like purebred bull should be to cross on British cows

## 12 BDCL DC 44D8

Purebred 88% Gelbvieh Bull Double Black Homozygous Polled  
12/8/2016 BDCL 44D8 1391285

JRI TOP PRODUCER 282Z3

BDCG DC BUSINESSMAN 401B ET

DARC P401

HYEK BLACK IMPACT 3960N

BDCG DC SASHA 44Y1

BDCG DC HERSHEY 44S1

\$COW	80.49
FPI	63.94
EPI	65.12

CED	BW	WW	YW	MK	TM	CEM	YG	CW	REA	MB
10	1.1	63	86	31	62	0	-0.36	23	0.53	-0.09
BW	Adj. WW	Adj. YW	Adj. REA	Adj. IMF	Adj. Fat					
82	578	1150	12.64	2.297	0.17					

- Sired by the popular futurity champion BDCG Businessman
- Productive dam with 98 BW 100 WW ratio's
- Fed with the spring PB bulls and posted a 127 gain ratio on test



BDCG DC BUSINESSMAN 401B ET • Sire of Lot 12.





TOG TWIN OAK LONE STAR 540D ET • Sells as Lot 13.



TOG TWIN OAK LONE STAR 547D ET • Sells as Lot 14.



CCRO MS C-CROSS EC / 7309T • Dam of Lots 13, 14.

## 13 TOG TWIN OAK LONE STAR 540D ET

50%GV 50%AN Balancer Bull      Homozygous Black      Homozygous Polled  
8/9/2016      TOG 540D      1369739

SS OBJECTIVE T510 0T26  
LONE STAR ADVANTAGE E753  
LONRE STAR E161 BELLE E506  
FHG FLYING H EXCLUSIVE  
CCRO MS C-CROSS EC / 7309T  
FHG CAROLINA MS 3661L 5124R

\$COW	
FPI	100.28
EPI	

CED	BW	WW	YW	MK	TM	CEM	YG	CW	REA	MB
18	-1.5	75	126	30	67	7	-0.23	43	0.52	0.89
BW	Adj. WW	Adj. YW	Act. REA	Act. IMF	Act. Fat					
78	646	1199	17.87	3.25	0.25					

- An ET marriage of the carcass legends in the Gelbvieh and Angus breeds
- 105 REA on ultra sound
- Top 3% CE 20% BW 20%WW 5%YW 15% MK and top 1% MB
- Outstanding Balancer Herd sire prospect

## 14 TOG TWIN OAK LONE STAR 547D ET

50%GV 50%AN Balancer Bull      Homozygous Black      Homozygous Polled  
8/11/2016      TOG 547D      1369743

SS OBJECTIVE T510 0T26  
LONE STAR ADVANTAGE E753  
LONRE STAR E161 BELLE E506  
FHG FLYING H EXCLUSIVE  
CCRO MS C-CROSS EC / 7309T  
FHG CAROLINA MS 3661L 5124R

\$COW	
FPI	100.28
EPI	

CED	BW	WW	YW	MK	TM	CEM	YG	CW	REA	MB
18	-1.5	75	126	30	67	7	-0.23	43	0.52	0.89
BW	Adj. WW	Adj. YW	Act. REA	Act. IMF	Act. Fat					
80	660	1120	18.61	6.52	0.44					

- High marbling Fall bull and one the best we've ever tested
- 193 IMF ratio 110 REA ratio's on ultra sound
- A ET marriage of the carcass legends in the Gelbvieh and Angus breeds
- Herd Bull EPD's with Breed leading carcass genetics, Look him up



## 15 TOG TWIN OAK WAYLON 542D ET

50%GV 50%AN Balancer Bull      Homozygous Black      Homozygous Polled  
8/10/2016      TOG 542D      1369740

GAR-EGL PROTEGE  
BALDRIDGE WAYLON W34

BALDRIDGE BLACKCAP T163  
MRCO NEW DIRECTION 905

DCSF POST ROCK TWILA 223M2

DCSF POST ROCK TWILA 3F2

\$COW	
FPI	83.35
EPI	

CED	BW	WW	YW	MK	TM	CEM	YG	CW	REA	MB
9	0.3	72	110	29	66	10	-0.28	36	0.33	0.41
BW		Adj. WW		Adj. YW		Act. REA		Act. IMF		Act. Fat
81		692		1213		18.03		2.88		0.34

- ET son of 223M2 out of the Angus bull Baldrige Waylon that is noted for his carcass genetics and sturdy built sons
- Huge rib eye with a 106 ratio
- My dad, Bill, thinks this is one of the best bulls we have ever had the privilege to sell
- Herd Bull hunters have a look, He's a stud



TOG TWIN OAK WAYLON 542D ET • Sells as Lot 15.

## 16 TOG TWIN OAK WAYLON 549D ET

50%GV 50%AN Balancer Bull      Heterozygous Black      Homozygous Polled  
8/13/2016      TOG 549D      1369745

GAR-EGL PROTEGE  
BALDRIDGE WAYLON W34

BALDRIDGE BLACKCAP T163  
MRCO NEW DIRECTION 905

DCSF POST ROCK TWILA 223M2

DCSF POST ROCK TWILA 3F2

\$COW	
FPI	83.35
EPI	

CED	BW	WW	YW	MK	TM	CEM	YG	CW	REA	MB
9	0.3	72	110	29	66	10	-0.28	36	0.33	0.41
BW		Adj. WW		Adj. YW		Act. REA		Act. IMF		Act. Fat
87		643		1216		18.7		3.19		0.28

- Huge rib eye with a 110 ratio
- ET mating that combines the best of the Angus and Gelbvieh breeds
- An own son of the featured 223M2 donor who is approaching 250 progeny



DCSF POST ROCK TWILA 223M2 • Dam of Lots 15-24.

## 17 TOG TWIN OAK WAYLON 550D ET

50%GV 50%AN Balancer Bull      Heterozygous Black      Heterozygous Polled  
8/13/2016      TOG 550D      1369746

GAR-EGL PROTEGE  
BALDRIDGE WAYLON W34

BALDRIDGE BLACKCAP T163  
MRCO NEW DIRECTION 905

DCSF POST ROCK TWILA 223M2

DCSF POST ROCK TWILA 3F2

\$COW	
FPI	83.35
EPI	

CED	BW	WW	YW	MK	TM	CEM	YG	CW	REA	MB
9	0.3	72	110	29	66	10	-0.28	36	0.33	0.41
BW		Adj. WW		Adj. YW		Act. REA		Act. IMF		Act. Fat
82		674		1242		16.93		3.2		0.32

- Performance strong member of the flush that includes lot 15 16 17 18 19
- Big rib eye and good marbling on ultra sound
- Build your cow herd and top the market with his progeny

## 18 TOG TWIN OAK WAYLON 533D ET

50%GV 50%AN Balancer Bull      Heterozygous Black      Scurred  
8/7/2016      TOG 533D      1369730

GAR-EGL PROTEGE  
BALDRIDGE WAYLON W34

BALDRIDGE BLACKCAP T163  
MRCO NEW DIRECTION 905

DCSF POST ROCK TWILA 223M2

DCSF POST ROCK TWILA 3F2

\$COW	
FPI	83.35
EPI	

CED	BW	WW	YW	MK	TM	CEM	YG	CW	REA	MB
9	0.3	72	110	29	66	10	-0.28	36	0.33	0.41
BW		Adj. WW		Adj. YW		Act. REA		Act. IMF		Act. Fat
78		667		1230		17.54		5		0.34

- 148 IMF 103 REA ratio's on ultra sound
- Put together a set of these flush brothers for add consistence to your calf crop
- Really good bull look him up

## 19 TOG TWIN OAK WAYLON 537D ET

50%GV 50%AN Balancer Bull      Homozygous Black      Scurred  
8/7/2016      TOG 537D      1369734

GAR-EGL PROTEGE  
BALDRIDGE WAYLON W34

BALDRIDGE BLACKCAP T163  
MRCO NEW DIRECTION 905

DCSF POST ROCK TWILA 223M2

DCSF POST ROCK TWILA 3F2

\$COW	
FPI	83.35
EPI	

CED	BW	WW	YW	MK	TM	CEM	YG	CW	REA	MB
9	0.3	72	110	29	66	10	-0.28	36	0.33	0.41
BW		Adj. WW		Adj. YW		Act. REA		Act. IMF		Act. Fat
87		662		1223		16		3.63		0.41

- 108 IMF ratio with an actual 16 inch rib eye
- Member of one the strongest flushes ever at Post Rock
- Daughters to keep and steers to top the market



BALDRIDGE WAYLON W34 • Sire of Lots 15-19.



TOG TWIN OAK CONNEALY FOCUS 539D ET • Sells as Lot 20.

## 20 TOG TWIN OAK CONNEALY FOCUS 539D ET

50%GV 50%AN Balancer Bull Heterozygous Black Homozygous Polled  
8/9/2016 TOG 539D 1369736

MYTTY IN FOCUS										
CONNEALY IN FOCUS 4925										
BLACK CANA OF CONANGA 206										
MRCO NEW DIRECTION 905										
DCSF POST ROCK TWILA 223M2										
DCSF POST ROCK TWILA 3F2										
CED	BW	WW	YW	MK	TM	CEM	YG	CW	REA	MB
12	-0.8	75	108	34	72	7	-0.26	33	0.32	0.16
BW	Adj. WW	Adj. YW	Act. REA	Act. IMF	Act. Fat					
70	677	1132	19.71	1.2	0.22					

- Almost a 20 inch rib eye with a 116 ratio
- Connealy in Focus sons have been rancher favorites for many years
- Homo polled herd bull look him up

## 21 TOG TWIN OAK CONNEALY FOCUS 541D ET

50%GV 50%AN Balancer Bull Homozygous Black Homozygous Polled  
8/9/2016 TOG 541D 1369738

MYTTY IN FOCUS										
CONNEALY IN FOCUS 4925										
BLACK CANA OF CONANGA 206										
MRCO NEW DIRECTION 905										
DCSF POST ROCK TWILA 223M2										
DCSF POST ROCK TWILA 3F2										
CED	BW	WW	YW	MK	TM	CEM	YG	CW	REA	MB
12	-0.8	75	108	34	72	7	-0.26	33	0.32	0.16
BW	Adj. WW	Adj. YW	Act. REA	Act. IMF	Act. Fat					
74	701	1186	20.37	2.87	0.32					

- Largest rib eye at over 20 inches with a 119 ratio
- Take advantage of our aggressive ET program designed to bring you breed leading genetics in volume
- Flush brother to lot 20 and 22 with herd sire EPD's and this group of flush brothers will definitely add muscle

## 22 TOG TWIN OAK CONNEALY FOCUS 545D ET

50%GV 50%AN Balancer Bull Homozygous Black Heterozygous Polled  
8/11/2016 TOG 545D 1369741

MYTTY IN FOCUS										
CONNEALY IN FOCUS 4925										
BLACK CANA OF CONANGA 206										
MRCO NEW DIRECTION 905										
DCSF POST ROCK TWILA 223M2										
DCSF POST ROCK TWILA 3F2										
CED	BW	WW	YW	MK	TM	CEM	YG	CW	REA	MB
12	-0.8	75	108	34	72	7	-0.26	33	0.32	0.16
BW	Adj. WW	Adj. YW	Act. REA	Act. IMF	Act. Fat					
74	627	1112	15.22	3.55	0.3					

- 105 IMF ratio on ultra sound
- If you have never owned a 223M2 son I would strongly encourage you to do so, her daughters are the best in the business
- Well balanced EPDS across the board

## 23 TOG TWIN OAK CONFIDENCE 529D ET

50%GV 50%AN Balancer Bull Homozygous Black Scurred  
8/3/2016 TOG 529D 1369726

CONNEALY TOBIN										
CONNEALY CONFIDENCE 0100										
BECKA GALA OF CONANGA 8281										
MRCO NEW DIRECTION 905										
DCSF POST ROCK TWILA 223M2										
DCSF POST ROCK TWILA 3F2										
CED	BW	WW	YW	MK	TM	CEM	YG	CW	REA	MB
20	-3.8	55	82	32	60	13	-0.23	14	0.24	-0.03
BW	Adj. WW	Adj. YW	Act. REA	Act. IMF	Act. Fat					
64	609	1105	19.01	2.24	0.27					

- The ultimate heifer bull that has top 1 % calving ease and 3% low birth EPD's
- Flush sisters are awesome young cows
- 112 ratio on REA on ultrasound

## 24 TOG TWIN OAK PIONEER 532D ET

50%GV 50%AN Balancer Bull Heterozygous Black Homozygous Polled  
8/6/2016 TOG 532D 1369729

S A V FINAL ANSWER 0035										
S A V PIONEER 7301										
S A V BLACKBIRD 5297										
MRCO NEW DIRECTION 905										
DCSF POST ROCK TWILA 223M2										
DCSF POST ROCK TWILA 3F2										
CED	BW	WW	YW	MK	TM	CEM	YG	CW	REA	MB
13	-0.9	63	96	35	66	9	-0.23	26	0.28	0.04
BW	Adj. WW	Adj. YW	Adj. REA	Adj. IMF	Adj. Fat					
73	617	1101								

- Pioneer sons have been popular for many years in the Angus breed
- 223M2 has been retired from embryo production so these will be among the last large groups of sons
- Lots of good genetics back this bull





DCSF POST ROCK DIVIDEND 375D8ET • Sells as Lot25.



DMS STUCKYS DAK ET • Sells as Lot 26.

## 25 DCSF POST ROCK DIVIDEND 375D8ET

50%GV 50%AN Balancer Bull      Homozygous Black      Homozygous Polled  
11/18/2016      DCSF 375D8      1390887

BASIN PAYWEIGHT 006S

BASIN PAYWEIGHT 1682

21AR O LASS 7017

XXB TITUS 880K

DARC P401

SLGB MISS POWER LINE

CED	BW	WW	YW	MK	TM	CEM	YG	CW	REA	MB
13	-0.5	78	125	26	65	6	-0.36	43	0.59	0.3
BW	Adj. WW	Adj. YW	Adj. REA	Adj. IMF	Adj. Fat					
72	636	1233	15.15	2.876	0.49					

\$COW	93.05
FPI	85.95
EPI	135.68

Genomic enhanced EPDs.

- ET produced by the limited supply/high demand Basin Payweight 1682
- Went to Denver to represent our program and won his class and division
- One of the last sons available from the famed DARCI donor
- Herd bull on his own merits that can be used on heifers

## 27 BDCG DC 401D1 ET

50%GV 50%AN Balancer Bull      Homozygous Black      Homozygous Polled  
9/3/2016      BDCG 401D1      1389254

CONNELLY TOBIN

CONNELLY CONFIDENCE 0100

BECKA GALA OF CONANGA 8281

XXB TITUS 880K

DARC P401

SLGB MISS POWER LINE

CED	BW	WW	YW	MK	TM	CEM	YG	CW	REA	MB
19	-2.6	61	95	20	50	10	-0.23	23	0.39	0.04
BW	Adj. WW	Adj. YW	Act. REA	Act. IMF	Act. Fat					
76	666	1123	17.9	2.14	0.27					

\$COW	95
FPI	71.78
EPI	107.32

- The ultimate heifer bull with top 2 % calving ease genetics and still offers lots of growth
- 105 REA on ultra sound
- Heifer bull with a lot of shape and muscle

## 26 DMS STUCKYS DAK ET

50%GV 50%AN Balancer Bull      Homozygous Black      Homozygous Polled  
12/1/2016      DMS DAR29D      1378395

S A V FINAL ANSWER 0035

SANDPOINT BUTKUS X797

G A R GRID MAKER 4603

XXB TITUS 880K

DARC P401

SLGB MISS POWER LINE

CED	BW	WW	YW	MK	TM	CEM	YG	CW	REA	MB
16	-0.6	76	122	20	58	9	-0.38	41	0.54	0.29
BW	Adj. WW	Adj. YW	Adj. REA	Adj. IMF	Adj. Fat					
53	649	1226	13.04	2.006	0.61					

\$COW	103.1
FPI	84.97
EPI	125.21

Genomic enhanced EPDs.

- This bull went to Denver and was Stucky's Beef Genetics Balancer Futurity entry
- Outstanding EPD's across the board and a sure fire heifer bull with unlimited genetic merit
- Donor dam DARCI is the only cow in the breed to have produced 2 purebred Futurity winners
- Sire is Select Sires feature stud bull that we really like for there daughters and Carcass genetics
- Reserve Division in Denver



BDCG DC BUSINESSMAN 401B ET • Sire of Lots 28-30.

## GENOMIC ENHANCED EPD'S

ALL BULLS selling have had LD or ultra LD Genomic Enhanced EPD's test performed. Unfortunately the results were not back by the time the catalog went to print. They will be posted as soon as they are available on MMS.bz or you call our office for an email or fax copy. They will also be available on the supplement sheet sale day.



TOG TWIN OAK IN FOCUS 551D ET • Sells as Lot 31.

## 28 BDCG DC 147D16ET ET

63%GV 31%AR Balancer Bull Black Homozygous Polled  
12/25/2016 BDCG 147D16 1390526

JRI TOP PRODUCER 282Z3

BDCG DC BUSINESSMAN 401B ET

DARC P401

NL RED NORTHLINE ROB ROY 122K

BDCG DC WILMA 147X1 ET

DCSF POST ROCK WILMA 147H ET

\$COW	71.03
FPI	65.54
EPI	82.01

CED	BW	WW	YW	MK	TM	CEM	YG	CW	REA	MB
6	2.1	67	100	30	63	1	-0.34	32	0.4	-0.03
BW	Adj. WW	Adj. YW	Adj. REA	Adj. IMF	Adj. Fat					
90	560	1148	12.18	2.087	0.2					

- Productive donor dam has a 108 Nursing ratio on her first 5 calves
- ET sired by the popular Breeder's Choice Futurity champion BDCG Businessman
- Combines two of the great cow families in the Gelbvieh breed

## 29 BDCG DC 147D9ET ET

63%GV 31%AR Balancer Bull Black Homozygous Polled  
9/28/2016 BDCG 147D9 1390521

JRI TOP PRODUCER 282Z3

BDCG DC BUSINESSMAN 401B ET

DARC P401

NL RED NORTHLINE ROB ROY 122K

BDCG DC WILMA 147X1 ET

DCSF POST ROCK WILMA 147H ET

\$COW	71.03
FPI	65.54
EPI	82.01

CED	BW	WW	YW	MK	TM	CEM	YG	CW	REA	MB
6	2.1	67	100	30	63	1	-0.34	32	0.4	-0.03
BW	Adj. WW	Adj. YW	Act. REA	Act. IMF	Act. Fat					
82	648	1116	18.77	2.48	0.32					

- Flush brother to lot 28
- 110 REA ratio on ultra sound
- These businessman sons are very popular in the industry

## 30 BDCG DC X56D

75%GV 19%AR Balancer Bull Double Black Homozygous Polled  
11/24/2016 BDCG X56D 1386674

JRI TOP PRODUCER 282Z3

BDCG DC BUSINESSMAN 401B ET

DARC P401

JBOB CAROLINA FORTUNE 2564JET

BDCG S56X ET

AHL REBA 56S

\$COW	84.31
FPI	66.15
EPI	72.23

CED	BW	WW	YW	MK	TM	CEM	YG	CW	REA	MB
9	0.9	59	93	27	56	0	-0.33	26	0.52	0.1
BW	Adj. WW	Adj. YW	Act. REA	Act. IMF	Act. Fat					
78	492	1062	15.1	3.38	0.34					

- Older bull that can handle more cows
- 100 IMF ratio on ultra sound
- Businessman that traces back to the national champion REBA

## 31 TOG TWIN OAK IN FOCUS 551D ET

50%GV 50%AN Balancer Bull Homozygous Black Homozygous Polled  
8/13/2016 TOG 551D 1369747

SAF FOCUS OF ER

MYTTY IN FOCUS

MYTTY COUNTESS 906

MCFG MIDDLE CREEK STAR 10S ET

TOG TWIN OAK STAR 191W ET

DCSF POST ROCK TWILA 223M2

\$COW	74.77
FPI	81.3
EPI	140.27

CED	BW	WW	YW	MK	TM	CEM	YG	CW	REA	MB
14	-0.9	73	108	29	66	12	-0.21	32	0.14	0.24
BW	Adj. WW	Adj. YW	Act. REA	Act. IMF	Act. Fat					
84	642	1274	21.63	2.76	0.3					

- ET son of the Angus legend Mytty in Focus
- Over a 21 inch REA with a ratio of 127
- Herd bull on his own merits out of the donor dam of the 277Y bull used for many years on heifers by Post Rock. Look him up









BDCL DC 14D8 • Sells as Lot 37.

### 37 BDCL DC 14D8

38%GV 50%AN 12%AR Balancer Bull Double Black Double Polled  
12/19/2016 BDCL 14D8 1389246

MYTTY IN FOCUS

TTTT MIGHTY HOT ET

AHL HOTTDAMN 105R ET

S A V BRUISER 9164

BDCL MS 14C2

BDCG DC MS CHEROKEE 14U ET

\$COW	
FPI	81.13
EPI	

CED	BW	WW	YW	MK	TM	CEM	YG	CW	REA	MB
16	-1.7	70	107	26	61	6	-0.27	31	0.41	0.34
BW	Adj. WW	Adj. YW	Adj. REA	Adj. IMF	Adj. Fat					
66	604	1204	13.88	3.493	0.25					

- The first of the 2016 Balancer Futurity bull champion MIGHTY HOT to sell
- Individual ratio's are outstanding 92 BW 102 WW 103 REA and 108 IMF
- Fed with spring balancer bulls and posted a 111 ratio on gain test



BDCL DC 44D9 • Sells as Lot 38.

### 38 BDCL DC 44D9

63%GV 33%AN Balancer Bull Double Black Homozygous Polled  
12/13/2016 BDCL 44D9 1391287

MYTTY IN FOCUS

TTTT MIGHTY HOT ET

AHL HOTTDAMN 105R ET

BDCG BDCG 147Z3

BDCL DC SASHA 44C

BDCG DC SASHA 44Y1

\$COW	92.82
FPI	77.25
EPI	98.79

CED	BW	WW	YW	MK	TM	CEM	YG	CW	REA	MB
15	-1.4	69	98	26	60	5	-0.26	23	0.24	0.17
BW	Adj. WW	Adj. YW	Adj. REA	Adj. IMF	Adj. Fat					
68	645	1252	13.05	2.972	0.41					

- Fed with the spring balancer bulls and was the high gaining bull with a 141 ratio
- MIGHTY HOT was the popular Balancer Futurity champion and walking right's are owned by Sticky's Beef Genetics
- 96 BW 112 WW 104 YW ratio's as an individual
- This bull is a herd bull look him up

### 39 DMS STUCKYS MH DARN FOCUSED

50%GV 44%AN Balancer Bull Double Black Double Polled  
12/25/2016 DMS 025YBD2 1374107

MYTTY IN FOCUS

TTTT MIGHTY HOT ET

AHL HOTTDAMN 105R ET

DCSF POST ROCK COLLATERAL2ET

DMS STUCKYS BALANCED FOCUS

DMS STUCKYS YESSICA

\$COW	90.81
FPI	74.61
EPI	96.03

CED	BW	WW	YW	MK	TM	CEM	YG	CW	REA	MB
15	-1.7	57	86	28	56	4	-0.23	20	0.23	0.32
BW	Adj. WW	Adj. YW	Adj. REA	Adj. IMF	Adj. Fat					
61	649	1161	12.67	4.583	0.29					

- Ratio's 93 REA and 120 IMF on ultra sound
- Fed with the spring bulls and posted a 111 ratio on gain test
- These Mighty Hots are a really good new sire group that we will have many more of in the future



TTTT MIGHTY HOT ET • Sire of Lots 37-42.

## HOMO BLACK HOMO POLLED

Expect many more bulls to be identified as HOMO BLACK & HOMO POLLED by DNA test that are not known by birthright (only ones listed in the catalog) the results will be posted as soon as available on MMS.bz or you may call our office for an email or fax.

Results will also be available on the supplement sheet.

### 42 DMS STUCKYS DEL

50%GV 44%AN Balancer Bull Double Black Double Polled  
12/23/2016 DMS 950Y2AD2 1376093

MYTTY IN FOCUS

TTTT MIGHTY HOT ET

AHL HOTTDAMN 105R ET

MRCO NEW DIRECTION 905

DMS STUCKYS ADELE

DMS STUCKYS YANG

\$COW	
FPI	73.86
EPI	

CED	BW	WW	YW	MK	TM	CEM	YG	CW	REA	MB
16	-0.3	63	93	28	60	8	-0.23	28	0.36	0.26
BW	Adj. WW	Adj. YW	Adj. REA	Adj. IMF	Adj. Fat					
68	657	1098	14.68	3.031	0.27					

- Fed with the spring balancer bulls and posted a 109 ratio on gain test
- 107 REA on ultrasound
- The best of Angus and Gelbvieh genetics combined



## 43 BDCL DC 14E1


50%GV 23%AN 16%AR Balancer Bull						Double Black		Double Polled							
1/28/2017						BDCL 14E1		1391844							
GGGE 3G EZ MONEY 209Z															
RROG BELLY BUSTER 211B								\$COW	93.11						
								RROG RROG ZAMMY 211Z							
								FPI	77.41						
SDCG X-FACTOR 202X															
BDCG DC 14A2								EPI	96.91						
BDCG DC MS CHEROKEE 14U ET															
CED	BW	WW	YW	MK	TM	CEM	YG	CW	REA	MB					
10	-1	76	113	27	65	2	-0.34	34	0.52	0.04					
BW		Adj. WW		Adj. YW		Adj. REA		Adj. IMF		Adj. Fat					
70		616		1193		15.13		4.014		0.31					

- Outstanding individual ratio's 88 BW 110 WW 107 YW
- 109 REA 101 IMF ratio on ultra sound
- Top 30% low birth combined with top 15% WW and 20% YW EPD's



BDCL DC 14E1 • Sells as Lot 43.

## 44 BDCL DC 44D11

	75% Gelbvieh Bull	Double Black	Double Polled							
	12/25/2016	BDCL 44D11	1391837							
GGGE 3G EZ MONEY 209Z										
RROG BELLY BUSTER 211B			<table><tr><td>\$COW</td><td>90.55</td></tr><tr><td>FPI</td><td>71.03</td></tr><tr><td>EPI</td><td>91.09</td></tr></table>	\$COW	90.55	FPI	71.03	EPI	91.09	
\$COW	90.55									
FPI	71.03									
EPI	91.09									
RROG RROG ZAMMY 211Z										
BDCG PMFG CHIEF EXECUTIVE10U1										
BDCL DC SASHA 44B2										
BDCG DC SASHA 44Y1										
CED	BW	WW	YW	MK	TM	CEM	YG	CW	REA	MB
10	1.5	75	107	25	63	3	-0.35	37	0.56	-0.06
BW		Adj. WW		Adj. YW		Adj. REA		Adj. IMF		Adj. Fat
85		566		1016		11.69		1.663		0.16

- 104 ratio on gain test with strong EPD's tabulation across the board
- Out cross sire for repeat customers
- Dam is off to a good start with 95 BW 102WW ratio's on her first 2 calves

## 45 DMS STUCKYS DARE

50%GV 44%AN Balancer Bull					Double Black			Double Polled			
11/28/2016					DMS 169LBD			1374110			
S A V BISMARCK 5682											
DMS STUCKYS BISMARCK ET DARC P401 DMS STUCKYS TRUSTEE								\$COW		109.92	
								FPI		73.05	
								EPI		80.4	
DMS STUCKYS BOSSY COW DCSF POST ROCK LAURA 169L2 ET											
CED	BW	WW	YW	MK	TM	CEM	YG	CW	REA	MB	
13	-1.1	66	98	28	61	6	-0.35	27	0.6	0.07	
BW		Adj. WW		Adj. YW		Act. REA		Act. IMF		Act. Fat	
65		649		1236		17.09		2.45		0.44	

- Huge rib eye of 17 inches
- Top 30% CE and low birth weight EPD's with above breed average growth numbers
- Dam is off to a great start with 95BW 102WW ratio's on her first two calves

## 46 DMS STUCKYS DALLAS

50%GV 51%AN Balancer Bull					Double Black			Double Polled		
12/2/2016					DMS 624YAD2			1376092		
S A V BISMARCK 5682										
DMS STUCKYS BISMARCK ET DARC P401 VRT LAZY TV SAM U451								\$COW		
DMS STUCKYS SAM I AM JOSH FOCUSED STACK 624Y								FPI		76.68
								EPI		
CED	BW	WW	YW	MK	TM	CEM	YG	CW	REA	MB
17	-0.6	66	99	30	64	9	-0.38	25	0.62	0.21
BW		Adj. WW		Adj. YW		Adj. REA		Adj. IMF		Adj. Fat
77		667		1170		12.97		2.06		0.31

- 119 ratio on gain test
- Top 5% Calving Ease combined with breed average growth and marbling EPD's
- Dam posted a 102 WW ratio on her first 3 calves

## 47 DMS STUCKYS DUDE

38%GV 56%AN Balancer Bull					Double Black			Double Polled			
9/22/2016					DMS 950WBD			1370664			
S A V BISMARCK 5682											
DMS STUCKYS BISMARCK ET								\$COW			
								DARC P401			
SYDGEN C C & 7											
DMS STUCKYS BEGONIA								EPI			
DMS STUCKYS WISTERIA											
CED	BW	WW	YW	MK	TM	CEM	YG	CW	REA	MB	
13	-0.1	62	97	27	58	8	-0.37	26	0.7	0.28	
BW		Adj. WW		Adj. YW		Act. REA		Act. IMF		Act. Fat	
72		634		1197		16.26		3.74		0.3	

- 111 ratio on marbling on ultrasound
- Very good individual data on a fall bull
- Sire is a flush brother to lot 72

## 49 TOG TWIN OAK POWER PLAY 563D

75% Gelbvieh Bull					Homozygous Black			Homozygous Polled		
9/2/2016					TOG 563D			1370186		
DLW DLW EDISON 6718X										
PLA POWER PLAY 14B								\$COW	69.37	
								PLA MISS UPWARD 221Z ET		
TOG TWIN OAK WESTERN 199W ET								FPI	70.53	
								JRI GREAT WESTERN 254N68 ET		
DCSF POST ROCK TWILA 223M2								EPI	75.77	
CED	BW	WW	YW	MK	TM	CEM	YG	CW	REA	MB
12	0.5	73	101	31	68	8	-0.5	29	0.53	-0.14
BW		Adj. WW		Adj. YW		Act. REA		Act. IMF		Act. Fat
88		678		1193		17.06		2.36		0.46

- 101 REA on ultra sound
- Dam is a flush sister to the \$17000 245W2 donor for 4T
- Outstanding dam ratio's 99BW 103WW 102YW on her first 3 calves



TOG TWIN OAK POWER PLAY 563D • Sells as Lot 49.

## 50 DCSF POST ROCK BLK BAL 339D8

38%GV 52%AN Balancer Bull      Homozygous Black      Homozygous Polled  
10/5/2016      DCSF 339D8      1390917

MYTTY IN FOCUS  
TOG TWIN OAK FOCUS 277Y  
TOG TWIN OAK STAR 188W ET  
EBY WESTERN HAULER 028S  
DCSF POST ROCK BLK BIRD 20Z8  
DCSF POST ROCK BLK BIRD 93X8

CED	BW	WW	YW	MK	TM	CEM	YG	CW	REA	MB
14	-1.6	68	108	27	61	10	-0.07	32	0.41	0.28
BW	Adj. WW	Adj. YW	Act. REA	Act. IMF	Act. Fat					
74	514	1107	16.66	2.3	0.41					

- Dam sells as lot 159
- Larger framed bull that can add some stretch to a smaller framed set of cows
- Not recommended for heifers as his EPD's indicate but highly recommend for British cows

## 52 DCSF POST ROCK BLK BAL 307D8

50%GV 50%AN Balancer Bull      Double Black      Double Polled  
9/21/2016      DCSF 307D8      1387249

DVA SCOUT 553  
VRT LAZY TV WATCHMAN W021  
VRT LAZY TV MS PETERBLT T309  
LONE STAR ADVANTAGE E753  
DCSF POST ROCK TWILA 301B8 ET  
DCSF POST ROCK TWILA 223M2

CED	BW	WW	YW	MK	TM	CEM	YG	CW	REA	MB
16	-2.6	69	103	34	69	8	-0.14	29	0.2	0.55
BW	Adj. WW	Adj. YW	Act. REA	Act. IMF	Act. Fat					
70	625	1177	13.61	2.62	0.27					

- AI sired by the popular Watchman bull
- Top 10% CE 10% BW 10% MB with above breed average growth EPD's
- Ratio's 88 BW 106 WW as an individual out of a heifer

## 54 BDCG DC405D3ET ET

63%GV 33%AN Balancer Bull      Double Black      Double Polled  
11/13/2016      BDCG 405D3      1390522

GGGE 3G EXCELLENCE 063X  
GGGE 3G ZIP LINE 266Z  
GGGE 3G COWGIRL WINNIFRED 982  
MORGANS DIRECTION 1119901  
BDCG DC SEXY LADY 405S1  
JCGR BAR GT SEXY LADY 405K ET

CED	BW	WW	YW	MK	TM	CEM	YG	CW	REA	MB
11	-0.7	73	108	29	66	0	-0.3	32	0.57	0.14
BW	Adj. WW	Adj. YW	Act. REA	Act. IMF	Act. Fat					
80	574	1213	15.09	2.94	0.4					

- ET son of the Denver champion Zip Line
- Top 35% BW 25% WW 35% YW and 15% REA EPD's
- Dam has a 107 WW and 107 YW ratio on 6 calves prior to being used as a donor

## 56 DCSF POST ROCK BLK BAL 349D8

13%GV 80%AN Bull      Homozygous Black      Homozygous Polled  
10/18/2016      DCSF 349D8      1390900

HOOVER DAM  
MILL BRAE HOOVER DAM  
MILL BRAE FA JOANIE 0152  
CTR CTR MOMMA MAKER 0056X  
DCSF POST ROCK BLK BAL 329B8  
DCSF POST ROCK BLK BAL 221X8

CED	BW	WW	YW	MK	TM	CEM	YG	CW	REA	MB
17	-1.4	71	111	23	58	10	0.07	40	0.22	0.81
BW	Adj. WW	Adj. YW	Act. REA	Act. IMF	Act. Fat					
72	647	1177	14.92	3.81	0.5					

- 113 IMF ratio
- Use him like you would an Angus bull but expect more performance
- Outstanding EPD's across the board with lots of top Angus AI sires up close

## 51 DCSF POST ROCK BLK BAL 308D8

63%GV 30%AN 7%AR Balancer Bull      Double Black      Homozygous Polled  
9/22/2016      DCSF 308D8      1387225

JRI TOP PRODUCER 282Z3  
DCSF POST ROCK POWER STROKE 95B1 ET  
DARG P401  
CTR CTR MOMMA MAKER 0056X  
DCSF POST ROCK BLUEBIRD 326B8  
DCSF POST ROCK BLUEBIRD 307Y

CED	BW	WW	YW	MK	TM	CEM	YG	CW	REA	MB
12	0.8	67	100	24	57	5	-0.24	28	0.43	0.36
BW	Adj. WW	Adj. YW	Act. REA	Act. IMF	Act. Fat					
82	609	1197	18.75	2.72	0.3					

- 110 REA ratio on ultra sound
- Breed average for calving ease and growth but top 25% for marbling EPD's
- Granddam sells as lot 148

## 53 DCSF POST ROCK BLK BAL 304D8

50%GV 50%AN Balancer Bull      Double Black      Double Polled  
9/18/2016      DCSF 304D8      1387223

DVA SCOUT 553  
VRT LAZY TV WATCHMAN W021  
VRT LAZY TV MS PETERBLT T309  
KCF BENNETT QUALITY FOCUSED  
DCSF POST ROCK TERESA 325B2  
DCSF POST ROCK TERESA 316W2

CED	BW	WW	YW	MK	TM	CEM	YG	CW	REA	MB
15	-1.6	66	100	28	61	6	-0.12	32	0.24	0.51
BW	Adj. WW	Adj. YW	Act. REA	Act. IMF	Act. Fat					
70	541	1103	14.84	6.75	0.46					

- Another AI son sired by the popular Watchman bull
- Highest marbling fall bull at over twice as much marbling as the Balancer bull average
- Top 15% CE 20% BW 10% MB and Balancer breed average for growth EPD's

## 55 DCSF POST ROCK BLK BAL 309D8

25%GV 70%AN Balancer Bull      Double Black      Double Polled  
9/21/2016      DCSF 309D8      1387226

HOOVER DAM  
MILL BRAE HOOVER DAM  
MILL BRAE FA JOANIE 0152  
TOG TWIN OAK FOCUS 277Y  
DCSF POST ROCK GT 307B8  
DCSF POST ROCK GT 403Z8

CED	BW	WW	YW	MK	TM	CEM	YG	CW	REA	MB
18	-1.9	70	111	26	62	9	-0.02	33	0.35	0.55
BW	Adj. WW	Adj. YW	Act. REA	Act. IMF	Act. Fat					
72	603	1221	17.72	3.59	0.37					

- 107 IMF 104 REA ratio's on ultrasound
- Should be nicknamed "Belly Bomb" and would be ideal for some cows that need some rib and fleshing ability
- Top 3% CE 15% BW 10% MB 35% WW and 25% YW EPD's

## 57 DCSF 370D8

13%GV 74%AN Bull      Homozygous Black      Homozygous Polled  
11/7/2016      DCSF 370D8      1390902

HOOVER DAM  
MILL BRAE HOOVER DAM  
MILL BRAE FA JOANIE 0152  
CTR CTR MOMMA MAKER 0056X  
DCSF POST ROCK NOSEGAY 391B8  
DCSF POST ROCK NOSEGAY 74X8

CED	BW	WW	YW	MK	TM	CEM	YG	CW	REA	MB
14	-1.2	69	114	22	56	10	0.04	38	0.22	0.7
BW	Adj. WW	Adj. YW	Act. REA	Act. IMF	Act. Fat					
72	674	1363	15.35	4.27	0.54					

- 92BW 113WW 108 YW ratio's as an individual
- 127IMF ratio on ultrasound
- Outstanding EPD's across the board, replace your Angus herd sire with this stud





DCSF POST ROCK P BUILT 73E2 • Sells as Lot 60.



DCSF POST ROCK POWER HOUSE 70E2 • Sells as Lot 58.

## 58 DCSF POST ROCK POWER HOUSE 70E2

Purebred 88% Gelbvieh Bull Heterozygous Black Scurred  
2/7/2017 DCSF 70E2 1392645

JRI TOP PRODUCER 282Z3	
DCSF POST ROCK POWER BUILT 37B8	\$COW 79.98
DCSF POST ROCK WILMA 298Z8 ET	FPI 71.49
BEA PASSION 001X ET	EPI 89.56
DCSF POST ROCK TWILA 65A2ET	
DCSF POST ROCK TWILA 223M2	

CED	BW	WW	YW	MK	TM	CEM	YG	CW	REA	MB
10	0.6	71	103	30	66	3	-0.43	31	0.45	-0.02
BW	Adj. WW	Adj. YW	Adj. REA	Adj. IMF	Adj. Fat					
78	712	1354	13.59	3.039	0.36					

Genomic enhanced EPDs.

- Went to Denver to represent our program
- Outstanding young dam 96 BW 102 WW 105 YW
- Terrific individual data look him up. He's dog gentle halter broke

## 60 DCSF POST ROCK P BUILT 73E2

Purebred 88% Gelbvieh Bull Red Homozygous Polled  
2/7/2017 DCSF 73E2 1403529

JRI TOP PRODUCER 282Z3	
DCSF POST ROCK POWER BUILT 37B8	\$COW 70.67
DCSF POST ROCK WILMA 298Z8 ET	FPI 65.01
JRI GREAT WESTERN 254N68 ET	EPI 73.12
DCSF POST ROCK TWILA 238W2 ET	
DCSF POST ROCK TWILA 223M2	

CED	BW	WW	YW	MK	TM	CEM	YG	CW	REA	MB
10	1.7	68	100	31	65	4	-0.28	29	0.64	-0.12
BW	Adj. WW	Adj. YW	Adj. REA	Adj. IMF	Adj. Fat					
92	719	1274	15.6	2.166	0.24					

- Outstanding red herd sire prospect with herd bull data to back it up
- Dam is A flush sister to the \$17,000 donor 245W2 that 4T purchased
- 117 ratio on gain test 114 Rea ratio on ultra sound
- He's a PB 88 with an outstanding set of numbers

## 61 DCSF POST ROCK POWER 107E1

Purebred 88% Gelbvieh Bull Black Homozygous Polled  
2/18/2017 DCSF 107E1 1391753

JRI TOP PRODUCER 282Z3	
DCSF POST ROCK POWER BUILT 37B8	\$COW 90.36
DCSF POST ROCK WILMA 298Z8 ET	FPI 72.87
GBNR BAR NONE CAPTAIN 42XET	EPI 96.36
DCSF POST ROCK BELLE 468Z1	
DCSF POST ROCK BELLE 292W1	

CED	BW	WW	YW	MK	TM	CEM	YG	CW	REA	MB
9	0.7	78	114	22	62	2	-0.22	39	0.49	-0.06
BW	Adj. WW	Adj. YW	Adj. REA	Adj. IMF	Adj. Fat					
84	718	1207	13.25	2.939	0.33					

- Check out these Power built sons they are meat wagons
- Dam comes from the Belle cow family that is performance strong
- Top 15% WW 15% YW 20% MB with near bred average CE and BW EPD's

## 59 DCSF POST ROCK POWER PLUS 84E1 ET

Purebred 88% Gelbvieh Bull Black Homozygous Polled  
2/10/2017 DCSF 84E1 1391731

JRI TOP PRODUCER 282Z3	
DCSF POST ROCK POWER BUILT 37B8	\$COW 91.37
DCSF POST ROCK WILMA 298Z8 ET	FPI 65.71
XXB TITUS 880K	EPI 81.29
DARC P401	
SLGB MISS POWER LINE	

CED	BW	WW	YW	MK	TM	CEM	YG	CW	REA	MB
9	1	70	100	24	59	1	-0.49	30	0.62	-0.18
BW	Adj. WW	Adj. YW	Adj. REA	Adj. IMF	Adj. Fat					
86	738	1121	15.15	2.987	0.17					

Genomic enhanced EPDs.

- ET son of DARC1 that was to be our PB futurity entry but early on had some health issues that put him too far behind
- Notice his outstanding ultra sound data
- Herd bull prospect look him up

## 62 DCSF POST ROCK POWER 114E1

Purebred 88% Gelbvieh Bull Black Double Polled  
2/20/2017 DCSF 114E1 1391756

JRI TOP PRODUCER 282Z3	
DCSF POST ROCK POWER BUILT 37B8	\$COW 86.06
DCSF POST ROCK WILMA 298Z8 ET	FPI 76
GBNR BAR NONE CAPTAIN 42XET	EPI 118.62
DCSF POST ROCK ELBA 470Z1	
DCSF POST ROCK ELBA 226U1	

CED	BW	WW	YW	MK	TM	CEM	YG	CW	REA	MB
6	2.7	87	129	23	66	2	-0.23	49	0.56	-0.02
BW	Adj. WW	Adj. YW	Adj. REA	Adj. IMF	Adj. Fat					
88	769	1294	13.66	2.568	0.25					

- Look at the EPDS and actual data to back it up
- Dam ratio's 102 WW on her first 3 calves
- Top 2% WW 3% YW 15% MB EPD's






**DCSF POST ROCK STROKE 2E2** • Sells as Lot 63.

## 63 DCSF POST ROCK STROKE 2E2

Purebred 88% Gelbvieh Bull					Double Black				Double Polled		
1/19/2017					DCSF 2E2				1391846		
JRI TOP PRODUCER 282Z3											
DCSF POST ROCK POWER STROKE 95B1 ET									SCOW	75.08	
DARC P401											
JKGF FUTURE INVESTMENT X037									FPI	69.84	
DCSF POST ROCK TWILA 145C2											
DCSF POST ROCK TWILA 236Y2 ET									EPI	52.31	
CED	BW	WW	YW	MK	TM	CEM	YG	CW		REA	MB
11	-0.4	67	90	27	60	3	-0.39	24	0.55	-0.01	
BW		Adj. WW		Adj. YW		Adj. REA		Adj. IMF		Adj. Fat	
72		701		1180		12.39		3.553		0.26	

- A stand out since birth out of a first calf heifer the kids showed very successfully
- 115 IMF ratio on ultra sound
- From a cow family built from the legendary donor 223M2
- Top 30% CE 20 %BW 10 %MB with acceptable growth EPDs

## 64 DCSF POST ROCK STROKE 119E2

	Purebred 88% Gelbvieh Bull				Double Black			Polled			
	2/21/2017				DCSF 119E2			1391856			
JRI TOP PRODUCER 282Z3											
DCSF POST ROCK	POWER STROKE 95B1 ET									\$COW	82.79
	DARC P401										
DCSF POST ROCK	JKGF FUTURE INVESTMENT X037									FPI	64.69
	RHONDA 29A2										
DCSF POST ROCK RHONDA 250N2ET											
CED	BW	WW	YW	MK	TM	CEM	YG	CW	REA	MB	
11	0.7	65	87	28	60	4	-0.39	24	0.57	-0.12	
BW		Adj. WW		Adj. YW		Adj. REA		Adj. IMF		Adj. Fat	
84		689		1152		14.63		3.972		0.35	

- From a great young cow that ratio's 100 BW 104 WW on her first 3 calves
- 107 REA 129 IMF ratio on ultra sound
- These Power Stroke progeny were very popular in his first calf crop last year

## 65 DCSF POST ROCK ASTRONAUT 124E2

Purebred 94% Gelbvieh Bull					Double Black			Double Polled		
2/22/2017					DCSF 124E2			1391761		
JKGF FUTURE INVESTMENT X037										
DCSF POST ROCK		ASTRONAUT 157A							\$COW	78.77
		DCSF POST ROCK ELBA 50U2								
		MCFG MIDDLE CREEK STAR 10S ET								
DCSF POST ROCK		GRETA 160X2							FPI	63.08
		DCSF POST ROCK GRETA 238S2								
EPI		49.78								
CED	BW	WW	YW	MK	TM	CEM	YG	CW	REA	MB
7	3.2	73	96	26	62	9	-0.29	34	0.4	-0.17
BW		Adj. WW		Adj. YW		Adj. REA		Adj. IMF		Adj. Fat
0		756		1129		12.55		2.709		0.27

- Awesome dam ratio's 101 BW 103WW on her 5 calves
- Astronaut will have the largest purebred sire group for good reason
- Strong purebred carcass and maternal genetics

## 66 DCSF POST ROCK ASTRONAUT 128E2

Purebred 94% Gelbvieh Bull					Double Black			Double Polled			
2/23/2017					DCSF 128E2			1392603			
JKGF FUTURE INVESTMENT X037											
DCSF POST ROCK ASTRONAUT 157A									\$COW	76.12	
DCSF POST ROCK ELBA 50U2										FPI	57.35
JRI GREAT WESTERN 254N68 ET										EPI	50.86
DCSF POST ROCK TWILA 11Z2											
DCSF POST ROCK TWILA 34X2											
CED	BW	WW	YW	MK	TM	CEM	YG	CW	REA	MB	
9	2.2	60	83	27	62	6	-0.3	26	0.33	-0.2	
BW		Adj. WW		Adj. YW		Adj. REA		Adj. IMF		Adj. Fat	
86		645		1124		14.7		3.345		0.43	

- 108 REA 109 IMF ratio's on ultra sound
- From a good uddered, moderate sized cow that very consistent
- Would work well on straight british cows that need more muscle and milk

## 67 DCSF POST ROCK ASTRONAUT 136E2

Purebred 94% Gelbvieh Bull					Double Black			Double Polled			
2/26/2017					DCSF 136E2			1392609			
JKGF FUTURE INVESTMENT X037											
DCSF POST ROCK ASTRONAUT 157A								\$COW	78.57		
DCSF POST ROCK ELBA 50U2									FPI	63.97	
DCSF POST ROCK SILVER 233U1											
DCSF POST ROCK WILMA 293Z2ET								EPI	89.48		
TOG TWIN OAK STAR 148U ET											
CED	BW	WW	YW	MK	TM	CEM	YG	CW	REA	MB	
7	2.5	71	105	28	65	7	-0.33	38	0.41	-0.17	
BW		Adj. WW		Adj. YW		Adj. REA		Adj. IMF		Adj. Fat	
84		721		1207		13.98		2.425		0.27	

- Outstanding dam ratio's 99 BW 105 WW on her first 5 calves
- Maternal brother brought \$6250 last year
- Build your cow herd and top the market with your steers

## 68 DCSF POST ROCK ASTRONAUT 169E1

Purebred 88% Gelbvieh Bull				Double Black				Homozygous Polled			
3/3/2017				DCSF 169E1				1391859			
JKGF FUTURE INVESTMENT X037											
DCSF POST ROCK ASTRONAUT 157A										SCOW	82.26
DCSF POST ROCK ELBA 50U2											
CTR GOOD NIGHT 880U										FPI	64.03
DCSF POST ROCK WILMA 299Z8 ET											
DCSF POST ROCK WILMA 261P1 ET										EPI	118.17
CED	BW	WW	YW	MK	TM	CEM	YG	CW	REA	MB	
8	2.2	70	104	25	62	7	-0.29	37	0.3	-0.17	
BW		Adj. WW		Adj. YW		Adj. REA		Adj. IMF		Adj. Fat	
86		718		1188		12.22		3.208		0.23	

- Framier bull ideal for adding some stretch and growth to some smaller cows
- Dam is highly regarded in our program
- Astronaut sons are popular for a reason





DCSF POST ROCK BLK BAL 176E8ET • Sells as Lot 69.

## 69 **DCSF POST ROCK BLK BAL 176E8ET**

50%GV 50%AN Balancer Bull      Double Black      Double Polled  
3/5/2017      DCSF 176E8      1392634

BASIN PAYWEIGHT 006S  
**BASIN PAYWEIGHT 1682**  
21AR O LASS 7017  
MRCO NEW DIRECTION 905  
**DCSF POST ROCK TWILA 223M2**  
DCSF POST ROCK TWILA 3F2

\$COW	76.23
FPI	83.33
EPI	104.41

CED	BW	WW	YW	MK	TM	CEM	YG	CW	REA	MB
13	-1.8	73	112	34	71	6	-0.12	34	0.15	0.29
BW		Adj. WW		Adj. YW		Adj. REA		Adj. IMF		Adj. Fat
78		683		1285		13.86		2.263		0.31

- One of the best bulls selling on his own merits and then look at the way he's bred
- 120 Ratio on gain test with Herd bull EPD's across the board
- ET marriage of elites in the Angus and Gelbvieh breeds
- Herd bull hunters have a look, he will be the first pick for some of all the bulls selling

## 70 **DCSF POST ROCK BLK BAL 7E8**

50%GV 50%AN Balancer Bull      Double Black      Double Polled  
1/23/2017      DCSF 7E8      1392643

BASIN PAYWEIGHT 006S  
**BASIN PAYWEIGHT 1682**  
21AR O LASS 7017  
JKGF FUTURE INVESTMENT X037  
**DCSF POST ROCK WILMA 61C2**  
DCSF POST ROCK WILMA 293Z2ET

\$COW	69.87
FPI	92.73
EPI	134.2

CED	BW	WW	YW	MK	TM	CEM	YG	CW	REA	MB
13	-1	83	134	24	66	4	0	47	0.42	0.5
BW		Adj. WW		Adj. YW		Adj. REA		Adj. IMF		Adj. Fat
72		733		1320		12.71		4.945		0.37

- Out of a first calf heifer that's going to be one of our best
- An own son of the High demand/ short supply PAYWEIGHT
- Individual ratio's of 89 BW 103 WW 105 YW
- Outstanding 138 IMF ratio on ultra sound



DCSF POST ROCK TWILA 223M2 • Dam of Lot 69.



DCSF POST ROCK BLK BAL 7E8 • Sells as Lot 70.



## 71 DMS STUCKYS ELWAY ET

50%GV 50%AN Balancer Bull Homozygous Black Homozygous Polled  
1/7/2017 DMS DAR31E 1392337

S A V FINAL ANSWER 0035

SANDPOINT BUTKUS X797

G A R GRID MAKER 4603

XXB TITUS 880K

DARC P401

SLGB MISS POWER LINE

CED	BW	WW	YW	MK	TM	CEM	YG	CW	REA	MB
16	-0.1	78	124	18	57	8	-0.34	43	0.5	0.28
BW		Adj. WW		Adj. YW		Adj. REA		Adj. IMF		Adj. Fat
75		619		1209		14.54		3.03		0.34

Genomic enhanced EPDs.

- Flush brother to lot 26
- No ratio's because he's an ET but look at his actual data and EPD's. They are awesome
- 115 ratio on gain test
- One of the last sons to sell out of the great DARCI donor

## 73 SDCG DC 401E ET

75%GV 25%AN Balancer Bull Black Homozygous Polled  
1/25/2017 SDCG 401E 1399074

JRI POP A TOP 197T83

JRI NEXT STEP 285X72

JRI MS BUTTERSCOTCH285T62 ET

S A V BISMARCK 5682

BDCG DC DARCI 401A2 ET

DARC P401

CED	BW	WW	YW	MK	TM	CEM	YG	CW	REA	MB
13	0.1	68	102	22	56	3	-0.54	30	0.7	0.03
BW		Adj. WW		Adj. YW		Adj. REA		Adj. IMF		Adj. Fat
76		675		1183		13.95		1.837		0.26

- Donor dam is a flush mate to lot 72 that was a division winner at several major shows including Denver
- 116 ratio on gain test
- Fresh new genetics that are cutting edge

## 72 DCSF POST ROCK BLK BAL 51E8 ET

50%GV 50%AN Balancer Bull Homozygous Black Homozygous Polled  
2/4/2017 DCSF 51E8 1391692

G A R GRID MAKER

S A V BISMARCK 5682

S A V ABIGALE 0451

XXB TITUS 880K

DARC P401

SLGB MISS POWER LINE

CED	BW	WW	YW	MK	TM	CEM	YG	CW	REA	MB
15	-0.6	69	104	22	56	7	-0.28	31	0.41	0.03
BW		Adj. WW		Adj. YW		Adj. REA		Adj. IMF		Adj. Fat
88		733		1291		14.49		4.41		0.35

- Bismarck X DARCI has been one of our all-time best ET matings
- Check out his actual data and EPD's, he's got all the bases covered
- Standout since birth

## 74 DCSF POST ROCK BLK BAL 33E8ET ET

50%GV 50%AN Balancer Bull Homozygous Black Homozygous Polled  
1/30/2017 DCSF 33E8 1392667

BARSTOW CASH

BSF HOT LOTTO 1401

BSF PRINCESS EL CAP W2

JB0B CAROLINA CPR

CTR 198L

CTR CEDAR TOP'S 344C

CED	BW	WW	YW	MK	TM	CEM	YG	CW	REA	MB
14	-0.3	68	105	26	60	6	-0.4	32	0.48	0.19
BW		Adj. WW		Adj. YW		Adj. REA		Adj. IMF		Adj. Fat
78		655		1121		11.81		3.356		0.33

Genomic enhanced EPDs.

- 106 ratio on gain test
- Purchased a flush on the top Purebred cow from Cedar Top and this is one of the resulting calves
- Didn't have as good of recip as some but he's coming on strong
- Sire Hot Lotto is getting very popular Angus breed

### SUGGESTED USE FOR GELBVIEWH and BALANCER® EPDs

TRAIT:	EPD WEIGHT RANGES:	EPD WEIGHT RANGES:	EPD WEIGHT RANGES:
Calving Ease EPD	Balancer® 15 and up	Balancer® 10-14	Balancer® 9 and below
	Purebred 13 and up	Purebred 7-12	Purebred 6 and below
<i>Recommended for:</i>	<i>Heifers and small cows</i>	<i>Younger cows and Problem-Calving Cows</i>	<i>Cows</i>
Weaning Weight EPD	Balancer® 51-60	Balancer® 61-70	Balancer® 71 and up
	Purebred 50-64	Purebred 65-72	Purebred 73 and up
<i>Will:</i>	<i>Maintain weaning weight</i>	<i>Moderately increase WW</i>	<i>Greatly increase WW</i>
Yearling Weight EPD	Balancer® 75-95	Balancer® 95-107	Balancer® 108 and up
	Purebred 70-89	Purebred 86-100	Purebred 102 and up
<i>Will provide:</i>	<i>Good growth potential</i>	<i>Excellent growth potential</i>	<i>Exceptional growth potential</i>
Milk EPD	Balancer® 17-22	Balancer® 23-27	Balancer® 28 and up
	Purebred 20-24	Purebred 25-30	Purebred 31 and up
<i>Will provide:</i>	<i>Excellent milk potential</i>	<i>Exceptional milk potential</i>	<i>Superior milk potential</i>





VLK C503 YOUNG GUN • Sire of Lots 75-84.

## 75 DCSF POST ROCK YOUNG GUN 167E8

63%GV 37%AN Balancer Bull      Homozygous Black      Homozygous Polled  
3/2/2017      DCSF 167E8      1392631

BGGR BGGR GRAVITY 803A  
VLK C503 YOUNG GUN  
BVLK BVLK X04 MONA LISA  
S A V IRON MOUNTAIN 8066  
DCSF POST ROCK GWEN 13Z8  
DCSF POST ROCK GWEN 130X1 ET

CED	BW	WW	YW	MK	TM	CEM	YG	CW	REA	MB
10	0.9	77	119	18	56	8	-0.4	41	0.5	0.36
BW	Adj. WW	Adj. YW	Adj. REA	Adj. IMF	Adj. Fat					
82	715	1262	13.88	3.556	0.41					

Genomic enhanced EPDs.

- Dam sells as lot 156, one of our very best
- Went to Denver to represent our program
- We couldn't be more excited about our Young Gun sire group

## 77 DCSF POST ROCK BLK BAL 115E8

75%GV 25%AN Balancer Bull      Double Black      Double Polled  
2/20/2017      DCSF 115E8      1391757

BGGR BGGR GRAVITY 803A  
VLK C503 YOUNG GUN  
BVLK BVLK X04 MONA LISA  
SDCG X-FACTOR 202X  
DCSF POST ROCK TWILA 331A8 ET  
DCSF POST ROCK TWILA 223M2

CED	BW	WW	YW	MK	TM	CEM	YG	CW	REA	MB
11	0.7	73	104	25	62	7	-0.23	30	0.34	0.07
BW	Adj. WW	Adj. YW	Adj. REA	Adj. IMF	Adj. Fat					
82	755	1303	13.43	3.011	0.31					

- 116 ratio on gain test
- Outstanding individual ratio's 100 BW 106 WW and 104 YW
- Dam is emerging as one of our top young cows



DCSF POST ROCK BLK BAL 58E8 • Sells as Lot 76.

## 76 DCSF POST ROCK BLK BAL 58E8

50%GV 44%AN Balancer Bull      Double Black      Double Polled  
2/5/2017      DCSF 58E8      1392642

BGGR BGGR GRAVITY 803A  
VLK C503 YOUNG GUN  
BVLK BVLK X04 MONA LISA  
KCF BENNETT QUALITY FOCUSED  
DCSF POST ROCK TWILA 260X8  
DCSF POST ROCK TWILA 248U2 ET

CED	BW	WW	YW	MK	TM	CEM	YG	CW	REA	MB
14	-0.3	80	120	29	69	8	-0.17	42	0.45	0.36
BW	Adj. WW	Adj. YW	Adj. REA	Adj. IMF	Adj. Fat					
78	775	1250	13.19	2.669	0.3					

- 105 gain ratio on test
- Outstanding dam 98 BW 110 WW on 5 calves
- His sire YOUNG GUN was reserve champion in Denver last year but He's much more than a pretty show bull

## 78 DCSF POST ROCK BLK BL 210E8

63%GV 37%AN Balancer Bull      Double Black      Double Polled  
3/13/2017      DCSF 210E8      1392600

BGGR BGGR GRAVITY 803A  
VLK C503 YOUNG GUN  
BVLK BVLK X04 MONA LISA  
SITZ UPWARD 307R  
DCSF POST ROCK TWILA 97A8 ET  
DCSF POST ROCK TWILA 223M2

CED	BW	WW	YW	MK	TM	CEM	YG	CW	REA	MB
13	0.7	73	114	30	67	9	-0.23	40	0.51	0.16
BW	Adj. WW	Adj. YW	Adj. REA	Adj. IMF	Adj. Fat					
86	723	1234	12.52	3.53	0.31					

- Dam's two flush brothers both sold for \$7500 and were part of a great flush
- Outstanding individual data across the board from a top young cow
- His sire Young Gun is emerging with very good data from his first calf crop with 99BW 102WW (low birth High Growth)





DCSF POST ROCK BLK BAL 93E8 • Sells as Lot 79.

## 80 DCSF POST ROCK BLK BAL 68E8

63%GV 37%AN Balancer Bull      Homozygous Black      Homozygous Polled  
2/7/2017      DCSF 68E8      1391722

BGGG BGGG GRAVITY 803A										
VLK C503 YOUNG GUN										
BVLK BVLK X04 MONA LISA										
CTR GOOD NIGHT 880U										
DCSF POST ROCK RAVENMERE 52Z8										
DCSF POST ROCK RAVENMERE 98T8										
CED	BW	WW	YW	MK	TM	CEM	YG	CW	REA	MB
10	2.3	77	122	18	56	6	-0.18	43	0.38	0.15
BW      Adj. WW      Adj. YW      Adj. REA      Adj. IMF      Adj. Fat										
90	708	1312	13.81	3.184	0.26					

- 111 ratio on gain test
- Top 20% growth EPD's with the data to back it up
- Dam sells as lot 170 look her up

## 82 DCSF POST ROCK BLK BAL 198E8

63%GV 37%AN Balancer Bull      Double Black      Homozygous Polled  
3/10/2017      DCSF 198E8      1392590

BGGG BGGG GRAVITY 803A										
VLK C503 YOUNG GUN										
BVLK BVLK X04 MONA LISA										
TAU MR KRUGERRAND 70M 130P										
DCSF POST ROCK 101X1 30B8										
DCSF POST ROCK 101X1 108Z8										
CED	BW	WW	YW	MK	TM	CEM	YG	CW	REA	MB
11	2	83	126	21	63	7	-0.1	47	0.34	0.26
BW      Adj. WW      Adj. YW      Adj. REA      Adj. IMF      Adj. Fat										
86	753	1278	14.78	2.642	0.36					

- Another High performing Young Gun with a 111 ratio on gain test
- Big REA with a 108 ratio on ultra sound
- Build your cow herd and top the market with the steer calves

### ULTRASOUND

Ultra sound data was collected on all bulls selling December 30, 2017. Be sure to compare only within contemporary groups for example FALL born purebreds to Fall born Purebreds. This is covered in Detail in the ABOUT THE SALE CATTLE PAGE.

## 79 DCSF POST ROCK BLK BAL 93E8

50%GV 50%AN Balancer Bull      Homozygous Black      Homozygous Polled  
2/13/2017      DCSF 93E8      1391737

BGGG BGGG GRAVITY 803A										
VLK C503 YOUNG GUN										
BVLK BVLK X04 MONA LISA										
KCF BENNETT QUALITY FOCUSED										
DCSF POST ROCK BLKBIRD 358Y8										
DCSF POST ROCK BLKBIRD 252W8										
CED	BW	WW	YW	MK	TM	CEM	YG	CW	REA	MB
14	1.2	80	120	24	64	8	-0.09	46	0.32	0.41
BW      Adj. WW      Adj. YW      Adj. REA      Adj. IMF      Adj. Fat										
90	750	1173	12.29	2.34	0.24					

- Outstanding dam sells as lot 146
- Dam ratio 97BW 103WW on her calves
- You will enjoy sorting thru the Young Gun sire group they are impressive

## 81 DCSF POST ROCK BLK BAL 135E8

63%GV 37%AN Balancer Bull      Double Black      Homozygous Polled  
2/26/2017      DCSF 135E8      1392608

BGGG BGGG GRAVITY 803A										
VLK C503 YOUNG GUN										
BVLK BVLK X04 MONA LISA										
MYTTY IN FOCUS										
BNG MS GENNY 729										
RTRT TEMPTRESS 168T ET										
CED	BW	WW	YW	MK	TM	CEM	YG	CW	REA	MB
13	0.6	75	112	19	56	8	-0.12	37	0.29	0.28
BW      Adj. WW      Adj. YW      Adj. REA      Adj. IMF      Adj. Fat										
86	707	1231	14.81	6.028	0.42					

- High gaining spring bull 121 ratio on gain test
- Outstanding ultra sound data. High marbling spring bull with a 168 ratio and a 108 REA
- Dam is a member of the DARCI tribe with outstanding 94BW 101WW ratio's on her first 3 calves

## 83 DCSF POST ROCK BLK BAL 39E8

63%GV 37%AN Balancer Bull      Double Black      Homozygous Polled  
2/1/2017      DCSF 39E8      1391660

BGGG BGGG GRAVITY 803A										
VLK C503 YOUNG GUN										
BVLK BVLK X04 MONA LISA										
DCSF POST ROCK FD 261S8 ET										
DCSF POST ROCK BLK BAL 97Z8										
DCSF POST ROCK BLK BAL 13X8										
CED	BW	WW	YW	MK	TM	CEM	YG	CW	REA	MB
12	0.3	67	97	23	56	6	-0.2	33	0.48	0.29
BW      Adj. WW      Adj. YW      Adj. REA      Adj. IMF      Adj. Fat										
80	667	1124	13.29	2.426	0.25					

- Consistent fault free dam sells as lot 166
- We hope you like these YOUNG GUNS as much as we do There will be a lot more in the future
- Breed average for calving ease with above breed average growth and top 35% marbling

## 84 DCSF POST ROCK BLK BAL 62E8

50%GV 42%AN Balancer Bull      Double Black      Double Polled  
2/6/2017      DCSF 62E8      1391698

BGGG BGGG GRAVITY 803A										
VLK C503 YOUNG GUN										
BVLK BVLK X04 MONA LISA										
BUETHE DIRECTION 19										
SCCB SADIE S13										
SCCB SCC LINEA L08										
CED	BW	WW	YW	MK	TM	CEM	YG	CW	REA	MB
12	1.5	66	103	22	55	8	-0.24	33	0.42	0.17
BW      Adj. WW      Adj. YW      Adj. REA      Adj. IMF      Adj. Fat										
88	692	1240	14.11	2.602	0.23					

- Outstanding dam 103 WW 101 YW ratio's on 10 Calves
- 103 ratio on REA ultra sound
- Well balanced highly useful EPDs with excellent actual data to back it up



## 85 DCSF POST ROCK BLK BAL 28E8

63%GV 25%AN Balancer Bull Double Black Homozygous Polled  
1/29/2017 DCSF 28E8 1391654

V A R DISCOVERY 2240  
VRT LAZY TV DISTINGUISHED C136  
VRT LAZY TV MS SPADE W413  
JRI TOP PRODUCER 282Z3  
DMS STUCKYS COWLEY ET  
DARC P401

\$COW	103.99
FPI	87.26
EPI	112.43

CED	BW	WW	YW	MK	TM	CEM	YG	CW	REA	MB
12	-0.2	82	121	31	72	2	-0.34	37	0.68	0.29
BW	Adj. WW	Adj. YW	Adj. REA	Adj. IMF	Adj. Fat					
82	814	1339	13.53	3.898	0.26					

- 113 ratio on gain test
- Dam is a flush sister to the futurity champion BDCG Businessman and Post Rock Power Stroke that the kids showed to a class winner at the Jr nationals
- Outstanding individual data 115 WW ratio 106 YW and 108 IMF ratio's as an individual

## 86 DCSF POST ROCK BLK BAL 24E8

63%GV 25%AN Balancer Bull Double Black Double Polled  
1/29/2017 DCSF 24E8 1391651

V A R DISCOVERY 2240  
VRT LAZY TV DISTINGUISHED C136  
VRT LAZY TV MS SPADE W413  
JRI TOP PRODUCER 282Z3  
DCSF POST ROCK WINNIE 402B2  
DCSF POST ROCK WINNIE 247Z2 ET

\$COW	95.62
FPI	82.68
EPI	123.08

CED	BW	WW	YW	MK	TM	CEM	YG	CW	REA	MB
12	0	73	121	30	67	2	-0.32	39	0.63	0.31
BW	Adj. WW	Adj. YW	Adj. REA	Adj. IMF	Adj. Fat					
80	689	1354	13.31	4.323	0.35					

- 119 Ratio on gain test
- Outstanding individual data 108 YW 120 IMF ratio on ultra sound
- Out of a fantastic 1st calf heifer who did an amazing job just look at the bull and the data

## 87 DCSF POST ROCK BLK BAL 74E8

50%GV 50%AN Balancer Bull Homozygous Black Homozygous Polled  
1/27/2017 DCSF 74E8 1391724

V A R DISCOVERY 2240  
VRT LAZY TV DISTINGUISHED C136  
VRT LAZY TV MS SPADE W413  
A A R TEN X 7008 S A  
TOG TWIN OAK 10X 470A ET  
CCRO MS C-CROSS EC / 7309T

\$COW	105.78
FPI	99.05
EPI	148.55

CED	BW	WW	YW	MK	TM	CEM	YG	CW	REA	MB
15	-2.9	75	128	30	67	8	-0.3	46	0.68	0.74
BW	Adj. WW	Adj. YW	Adj. REA	Adj. IMF	Adj. Fat					
66	682	1244	12.28	3.576	0.31					

- LOOK at these amazing EPD's top 15 % CE 10% BW 20% WW 4% YW 15% MK 5% REA and 2% MB
- Dam is a flush sister to an incredible flush of bulls that are now see herd sire duties in breed leading herds
- Outstanding Individual out of a first calf heifer with a 103 gain ratio on test

## 89 DCSF POST ROCK BLK BAL 101E8

50%GV 50%AN Balancer Bull Homozygous Black Double Polled  
2/16/2017 DCSF 101E8 1391739

V A R DISCOVERY 2240  
VRT LAZY TV DISTINGUISHED C136  
VRT LAZY TV MS SPADE W413  
JKGF FUTURE INVESTMENT X037  
DCSF POST ROCK 3000-4 87A8  
C&H MISS BURGESS 3000

\$COW	86.27
FPI	84.55
EPI	94.28

CED	BW	WW	YW	MK	TM	CEM	YG	CW	REA	MB
13	0.7	70	104	27	62	8	-0.29	36	0.45	0.54
BW	Adj. WW	Adj. YW	Adj. REA	Adj. IMF	Adj. Fat					
88	671	1135	13.64	4.295	0.33					

- 100 REA 139 IMF ratio's on ultra sound
- TOP 10% MB combined with top 35% Calving Ease 35% WW and 35% REA EPDs
- He covers all the bases from calving ease to performance to maternal to carcass. look him up



DCSF POST ROCK BLK BAL 28E8 • Sells as Lot 85.



DCSF POST ROCK BLK BAL 24E8 • Sells as Lot 86.

## 88 DCSF POST ROCK BLK BAL 148E8

50%GV 50%AN Balancer Bull Double Black Double Polled  
2/27/2017 DCSF 148E8 1392615

V A R DISCOVERY 2240  
VRT LAZY TV DISTINGUISHED C136  
VRT LAZY TV MS SPADE W413  
A A R TEN X 7008 S A  
DCSF POST ROCK ELBA 48B8  
DCSF POST ROCK ELBA 168Z2

\$COW	104.72
FPI	96.88
EPI	153.9

CED	BW	WW	YW	MK	TM	CEM	YG	CW	REA	MB
13	0	84	137	30	72	9	-0.25	49	0.61	0.61
BW	Adj. WW	Adj. YW	Adj. REA	Adj. IMF	Adj. Fat					
86	783	1320	14.25	3.331	0.33					

- 109 ratio on gain test
- 110WW 105YW 104 REA ratio's out of a first calf heifer. WOW!
- EPD's top 2 % growth 5% MB combined with top 35% calving ease

## 90 DCSF POST ROCK BLK BAL 133E8

50%GV 50%AN Balancer Bull Double Black Homozygous Polled  
2/25/2017 DCSF 133E8 1392607

V A R DISCOVERY 2240  
VRT LAZY TV DISTINGUISHED C136  
VRT LAZY TV MS SPADE W413  
SHIPWHEEL CHINOOK  
DCSF POST ROCK 268Y2 34A8  
DCSF POST ROCK REDBIRD 268Y1

\$COW	93.19
FPI	89.41
EPI	133.42

CED	BW	WW	YW	MK	TM	CEM	YG	CW	REA	MB
16	-1.7	75	120	31	69	9	-0.22	38	0.39	0.42
BW	Adj. WW	Adj. YW	Adj. REA	Adj. IMF	Adj. Fat					
82	711	1284	14.65	6.194	0.4					

- High marbling spring balancer with a 168 ratio and a 107 REA ratio on ultra sound
- Look at the outstanding individual data out of a top cow that ratio's 94 BW 102 WW 105 YW on 3 calves
- Sire was purchased as the High selling high ratio's bull out the Thorstenson herd in SD and is posting outstanding ratio's of 94BW 101WW 102 YW (30 calves) and 100REA 121IMF ( 8 calves) on ultra sound in his first calf crop





DCSF POST ROCK POWER 87E1 • Sells as Lot 93.



VRT LAZY TV DISTINGUISHED C136 • Sire of Lots 85-92.

## 91 DCSF POST ROCK BLK BAL 18E8

50%GV 50%AN Balancer Bull Double Black Double Polled  
1/27/2017 DCSF 18E8 1391648

V A R DISCOVERY 2240  
VRT LAZY TV DISTINGUISHED C136  
VRT LAZY TV MS SPADE W413  
S A V PIONEER 7301  
DCSF POST ROCK TWILA 250C8ET ET  
DCSF POST ROCK TWILA 223M2

\$COW	106.73
FPI	88.7
EPI	128.33

CED	BW	WW	YW	MK	TM	CEM	YG	CW	REA	MB
13	-0.8	78	126	35	74	10	-0.27	40	0.59	0.37
BW	Adj. WW	Adj. YW	Adj. REA	Adj. IMF	Adj. Fat					
80	785	1390	12.82	4.432	0.34					

- 99 BW 111 WW 111 YW ratios out of a royally bred 1st calf heifer that goes back to 223M2
- 123 ratio on IMF on ultra sound with a 104 ratio on gain test
- Look at the strength of EPD's across the board with top 5% growth and 35% Calving Ease

## 93 DCSF POST ROCK POWER 87E1

75% Gelbvieh Bull Black Double Polled  
2/11/2017 DCSF 87E1 1391735

JRI TOP PRODUCER 282Z3  
DCSF POST ROCK POWER BUILT 37B8  
DCSF POST ROCK WILMA 298Z8 ET  
GBNR BAR NONE CAPTAIN 42XET  
DCSF POST ROCK RAVEN 461Z1  
DCSF POST ROCK RAVEN 236W8

\$COW	83.36
FPI	73.67
EPI	103.49

CED	BW	WW	YW	MK	TM	CEM	YG	CW	REA	MB
7	2.4	80	118	24	64	2	-0.19	44	0.45	0.04
BW	Adj. WW	Adj. YW	Adj. REA	Adj. IMF	Adj. Fat					
86	715	1232	13.83	4.019	0.34					

- If you breed this bull to 88% or higher females the resulting progeny will be PB 88 calves with the new 2017 rule
- 101 ratio REA and 130 IMF ratio on ultra sound
- The black Power Built Son you've been searching for to use on your purebred cows HERD BULL DELUXE

## 92 DCSF POST ROCK BLK BAL 106E8

50%GV 50%AN Balancer Bull Double Black Double Polled  
2/6/2017 DCSF 106E8 1391752

V A R DISCOVERY 2240  
VRT LAZY TV DISTINGUISHED C136  
VRT LAZY TV MS SPADE W413  
KCF BENNETT QUALITY FOCUSED  
DCSF POST ROCK TWILA 303A8  
DCSF POST ROCK TWILA 309Y2

\$COW	87.7
FPI	91.96
EPI	136.71

CED	BW	WW	YW	MK	TM	CEM	YG	CW	REA	MB
14	0.4	79	132	30	70	9	-0.2	50	0.57	0.55
BW	Adj. WW	Adj. YW	Adj. REA	Adj. IMF	Adj. Fat					
86	671	1258	15.9	4.355	0.4					

- 113 ratio on gain test
- Incredible ultra sound 116 REA 121 IMF ratio's in a 30 head contemporary group
- Top 25% calving ease with top 3% YW and 10% MB EPD's

## 94 DCSF POST ROCK POWER 116E1

75%GV 18%AN Balancer Bull Black Homozygous Polled  
2/20/2017 DCSF 116E1 1391758

JRI TOP PRODUCER 282Z3  
DCSF POST ROCK POWER BUILT 37B8  
DCSF POST ROCK WILMA 298Z8 ET  
DCSF POST ROCK MASS APPEAL ET  
DCSF POST ROCK BLKBIRD 293W8  
DCSF POST ROCK BLKBIRD 246T8

\$COW	
FPI	67.03
EPI	

CED	BW	WW	YW	MK	TM	CEM	YG	CW	REA	MB
9	1.1	67	100	27	61	5	-0.28	32	0.39	-0.04
BW	Adj. WW	Adj. YW	Adj. REA	Adj. IMF	Adj. Fat					
86	680	1205	15.06	2.522	0.29					

- Dam has been a top producer that's place 2 sons in seedstock herds
- 110 REA ratio on ultra sound
- These black Power Built sons are a hard find and really good



## 95 DCSF POST ROCK BLK BAL 142E8

38%GV 60%AN Balancer Bull Homozygous Black Homozygous Polled  
2/7/2017 DCSF 142E8 1392649

DLW DLW EDISON 6718X

PLA POWER PLAY 14B

PLA MISS UPWARD 221Z ET

KCF BENNETT QUALITY FOCUSED

DCSF POST ROCK BARB 90A8

DCSF POST ROCK BARB 133Y8

\$COW	
FPI	85.71
EPI	

CED	BW	WW	YW	MK	TM	CEM	YG	CW	REA	MB
14	0	72	115	25	61	8	-0.21	42	0.39	0.4
BW	Adj. WW	Adj. YW	Adj. REA	Adj. IMF	Adj. Fat					
80	643	1187	13.14	3.14	0.3					

- 113 ratio on gain test
- TOP 25% or better EPD's for Calving Ease, WW, YW, and Marbling
- From a good uddered cow and cow family



## 96 DCSF POST ROCK BLK BAL 144E8

50%GV 44%AN Balancer Bull Homozygous Black Homozygous Polled  
2/27/2017 DCSF 144E8 1403678

DLW DLW EDISON 6718X

PLA POWER PLAY 14B

PLA MISS UPWARD 221Z ET

BDCG DC STOCKMAN 56W4 ET

DCSF POST ROCK 260T 184A8

DCSF POST ROCK 260T4 318W8

\$COW	
FPI	66.06
EPI	

CED	BW	WW	YW	MK	TM	CEM	YG	CW	REA	MB
6	2.1	78	101	31	70	5	-0.24	25	0.4	-0.22
BW	Adj. WW	Adj. YW	Adj. REA	Adj. IMF	Adj. Fat					
88	810	1278	14.01	3.248	0.33					

- 127 ratio on gain test
- High WW bull with a 114 ratio in an 80 head contemporary group
- Lots of pounds in as deep and wide package as you'll find



DCSF POST ROCK BLK BAL 144E8 • Sells as Lot 96.

## 97 DCSF POST ROCK BLK BAL 185E8

50%GV 48%AN Balancer Bull Double Black Homozygous Polled  
3/8/2017 DCSF 185E8 1392656

DLW DLW EDISON 6718X

PLA POWER PLAY 14B

PLA MISS UPWARD 221Z ET

DCSF POST ROCK HIGHLY FOCUSED

DCSF POST ROCK GWEN 988

DCSF POST ROCK GWEN 1328

\$COW	62.97
FPI	85.17
EPI	119.22

CED	BW	WW	YW	MK	TM	CEM	YG	CW	REA	MB
15	0.5	80	115	24	65	9	-0.19	38	0.29	0.32
BW	Adj. WW	Adj. YW	Adj. REA	Adj. IMF	Adj. Fat					
86	769	1223	11.02	4.3	0.3					

- Top 15% CE 10% WW 20% YW and 30% marbling EPD's
- 108 WW and 120 Marbling ratio's as an individual
- His sire was our choice of all the Denver pen bulls in 2015 and came from Plateau Gelbvieh

## 99 DCSF POST ROCK BLK BAL 158E8

75%GV 23%AN Balancer Bull Double Black Double Polled  
3/1/2017 DCSF 158E8 1392624

DCSF POST ROCK SILVER 233U1

DCSF POSTROCK SILVER 273Y1 ET

DARC P401

CTR CTR MOMMA MAKER 0056X

DCSF POST ROCK GWEN 9888

DCSF POST ROCK GWEN 7Y8

\$COW	92.13
FPI	77.78
EPI	157.08

CED	BW	WW	YW	MK	TM	CEM	YG	CW	REA	MB
8	2.5	85	134	15	58	7	-0.23	50	0.3	0.09
BW	Adj. WW	Adj. YW	Adj. REA	Adj. IMF	Adj. Fat					
86	745	1383	13	2.976	0.24					

- 117 ratio on gain test
- These SHARK sons have exceptional performance bred in 105 WW 110 YW ratio's as an individual
- Top 2% growth EPD's. Order an extra truck when you sell your calves



## 98 DCSF POST ROCK BLK BAL 141E8

63%GV 37%AN Balancer Bull Homozygous Black Homozygous Polled  
2/27/2017 DCSF 141E8 1392612

DCSF POST ROCK SILVER 233U1

DCSF POSTROCK SILVER 273Y1 ET

DARC P401

KCF BENNETT QUALITY FOCUSED

DCSF POST ROCK BLUEBIRD 307Y

DCSF POST ROCK BLUEBIRD 241W8

\$COW	
FPI	81.7
EPI	

CED	BW	WW	YW	MK	TM	CEM	YG	CW	REA	MB
10	1.4	86	143	15	59	4	-0.15	54	0.41	0.11
BW	Adj. WW	Adj. YW	Adj. REA	Adj. IMF	Adj. Fat					
80	756	1442	14.73	3.677	0.26					

- 123 ratio on gain test
- SHARK son with the added performance they are noted for
- 93 BW 106 WW 115YW ratio's as an individual
- Can't write better EPD's on a cow bull

## 100 DCSF POST ROCK BLK BAL 164E8

75%GV 22%AN Balancer Bull Double Black Homozygous Polled  
3/2/2017 DCSF 164E8 1392628

DCSF POST ROCK SILVER 233U1

DCSF POSTROCK SILVER 273Y1 ET

DARC P401

BDCG DC STOCKMAN 56W4 ET

DCSF POST ROCK QUEEN 6928

DCSF POST ROCK QUEEN 84U8

\$COW	
FPI	72.1
EPI	

CED	BW	WW	YW	MK	TM	CEM	YG	CW	REA	MB
6	3.2	85	136	14	57	2	-0.2	52	0.34	-0.1
BW	Adj. WW	Adj. YW	Adj. REA	Adj. IMF	Adj. Fat					
90	752	1382	13.64	2.23	0.33					

- High gaining bull on gain test 132 Ratio
- Top 2% growth EPD's with 106 WW and 110 YW ratio's to back it up
- Dam sells as lot 174

# Cowman's Kind SPRING BALANCER® BULLS



CTR CTR MOMMA MAKER 0056X • Sire of Lot 101.

## 102 DCSF POST ROCK BLK BAL 104E8

50%GV 50%AN Balancer Bull Red Homozygous Polled  
2/16/2017 DCSF 104E8 1391750

CTR CTR SANDHILLS 0065X  
BGR BGR GRAVITY 803A  
BGR MS FRONTPAGE 803U  
MORGANS DIRECTION 1119901  
DCSF POST ROCK WILMA 257S8 ET  
DCSF POST ROCK WILMA 147H ET

CED	BW	WW	YW	MK	TM	CEM	YG	CW	REA	MB
14	0.9	76	113	22	60	5	-0.3	37	0.55	0.47
BW	Adj. WW	Adj. YW	Adj. REA	Adj. IMF	Adj. Fat					
86	779	1279	14.34	2.741	0.24					

- Only red balancer this year but what a stud he is
- Dam has put 3 sons in seedstock herds
- 110 WW ratio in 80 head contemporary group and 105 ratio on ultra sound



DCSF POST ROCK POWER STROKE 95B1 ET • Sire of Lots 104, 105.

## 105 DCSF POST ROCK BLK BAL 8E8

75%GV 17%AN 8%AR Balancer Bull Double Black Homozygous Polled  
1/23/2017 DCSF 8E8 1391848

JRI TOP PRODUCER 282Z3  
DCSF POST ROCK POWER STROKE 95B1 ET  
DARC P401  
CTR CTR MOMMA MAKER 0056X  
DCSF POST ROCK WILMA 231C8  
DCSF POST ROCK WILMA 299Z8 ET

CED	BW	WW	YW	MK	TM	CEM	YG	CW	REA	MB
10	-0.1	68	98	25	59	4	-0.28	31	0.47	0.17
BW	Adj. WW	Adj. YW	Adj. REA	Adj. IMF	Adj. Fat					
74	694	1131	12.5	3.297	0.37					

- Kids did a lot of winning with his dam as a show heifer including a JR National class winner
- Extremely balanced and usable EPD's across the board
- Power Stroke is a flush brother to the Futurity champion BDCG Business Man

## 101 SDCG DC 32E

63%GV 34%AN Balancer Bull Double Black Double Polled  
1/16/2017 SDCG 32E 1391845

CTR MOMMA MAKER 4761P  
CTR CTR MOMMA MAKER 0056X  
CTR 8204U  
HYEK BLACK IMPACT 3960N  
BDCG DC MS IMPACT 32X10  
BDCG DC TILLY 32S

CED	BW	WW	YW	MK	TM	CEM	YG	CW	REA	MB
12	-0.2	68	102	24	58	7	-0.23	28	0.27	0.36
BW	Adj. WW	Adj. YW	Adj. REA	Adj. IMF	Adj. Fat					
80	580	1146	12.73	3.933	0.42					

- Outstanding dam ratio's 96 BW 105 WW on her first 5 calves
- Lots of maternal and carcass genetics bred in
- This will be the last of the Momma Maker sire groups this year

## 103 MLG MEADOWLARK STROKE 466E

50%GV 50%AN Balancer Bull Double Black Double Polled  
2/26/2017 MLG 466E 1404130

MYTTY IN FOCUS  
TOG TWIN OAK FOCUS 277Y  
TOG TWIN OAK STAR 188W ET  
A A R TEN X 7008 S A  
MLG MEADOWLARK SANAN 426B  
MLG MEADOWLARK SANAN 400Y

CED	BW	WW	YW	MK	TM	CEM	YG	CW	REA	MB
16	-1.5	68	114	27	61	11	-0.18	35	0.42	0.39
BW	Adj. WW	Adj. YW	Adj. REA	Adj. IMF	Adj. Fat					
78	686	1264	15.64	3.02	0.27					

- Huge REA ratio of 114 on ultra sound
- Top 10% Calving EASE with top 25% growth, milk and Marbling
- Heifer bull that will sire extra pounds you can sell

## 104 DCSF POST ROCK BLK BAL 20E8

63%GV 25%AN Balancer Bull Double Black Homozygous Polled  
1/27/2017 DCSF 20E8 1391849

JRI TOP PRODUCER 282Z3  
DCSF POST ROCK POWER STROKE 95B1 ET  
DARC P401  
BABR SECRET BRAND 2100Z ET  
DCSF POST ROCK GWEN 75C8  
DCSF POST ROCK GWEN 13Z8

CED	BW	WW	YW	MK	TM	CEM	YG	CW	REA	MB
11	0.2	66	97	23	56	4	-0.34	24	0.58	0.06
BW	Adj. WW	Adj. YW	Adj. REA	Adj. IMF	Adj. Fat					
84	679	1257	13.9	3.869	0.31					

- 101 REA 108 IMF ratio's on ultra sound
- His dam is a daughter of the feature cow lot 156
- These Power Stroke's were a very popular sale group last year

## 106 DCSF POST ROCK BLK BAL 121E8

25%GV 75%AN Balancer Bull Double Black Homozygous Polled  
2/22/2017 DCSF 121E8 1392664

HOOVER DAM  
MILL BRAE HOOVER DAM  
MILL BRAE FA JOANIE 0152  
DCSF POST ROCK BLK BAL 18P8  
DCSF POST ROCK QUEEN 84U8  
DCSF POST ROCK QUEEN 81N1

CED	BW	WW	YW	MK	TM	CEM	YG	CW	REA	MB
14	0.3	71	116	20	56	4	0.02	41	0.3	0.5
BW	Adj. WW	Adj. YW	Adj. REA	Adj. IMF	Adj. Fat					
90	776	1365	15.6	4.821	0.25					

- 113 ratio on gain test
- Impressive individual data with 109 WW and 109 YW ratio's as an individual
- Fantastic ultra sound 114 REA 134IMF ratio's







TTTT MIGHTY HOT ET • Sire of Lot 108.

## 107 DCSF POST ROCK BLK BAL 40E8

50%GV 50%AN Balancer Bull Double Black Double Polled  
2/1/2017 DCSF 40E8 1391661

S A V BRAND NAME 9115  
BABR SECRET BRAND 2100Z ET  
BABR SECRET CRUSH  
CONNEALY FINAL PRODUCT  
DCSF POST ROCK TWILA 17Z8  
DCSF POST ROCK TWILA 41X2

\$COW	64.35
FPI	73.15
EPI	115.63

CED	BW	WW	YW	MK	TM	CEM	YG	CW	REA	MB
8	0.7	73	111	20	57	5	-0.28	39	0.46	0.07
BW		Adj. WW		Adj. YW		Adj. REA		Adj. IMF		Adj. Fat
80		690		1226		13.95		2.954		0.23

- Sired by the past futurity champion Secret Brand
- Featured dam sells as lot 138
- Proven and predictable mating for repeat customers needing an outcross

## 108 DMS STUCKYS MIGHTY ELECTRIC

75%GV 25%AN Balancer Bull Double Black Scurred  
1/24/2017 DMS 76NE 1382564

MYTTY IN FOCUS  
TTTT MIGHTY HOT ET  
AHL HOTDAMN 105R ET  
MRCO NEW DIRECTION 905  
BDCG TESS 76N  
BDCG TESS 76L1

\$COW	91.31
FPI	71.57
EPI	88.87

CED	BW	WW	YW	MK	TM	CEM	YG	CW	REA	MB
14	0.7	59	94	27	56	6	-0.28	27	0.36	0.26
BW		Adj. WW		Adj. YW		Adj. REA		Adj. IMF		Adj. Fat
83		625		1126		12.2		2.848		0.29

- 113 ratio on gain test
- Dam is a past Pasture Pair Kansas State Fair champion
- Dam has an impressive 89BW 101WW 102YW ratios on 11 head

## 109 DCSF POST ROCK BLK BAL 12E8

50%GV 47%AN Balancer Bull Double Black Double Polled  
1/24/2017 DCSF 12E8 1391647

S A V FINAL ANSWER 0035  
EGL EGL LIFELINE B101  
EGL ESTELLE X014  
BABR SECRET BRAND 2100Z ET  
DCSF POST ROCK JORDYN 37C8  
ELC MISS JORDYN

\$COW	79.91
FPI	79.46
EPI	122.2

CED	BW	WW	YW	MK	TM	CEM	YG	CW	REA	MB
11	-1	75	109	18	55	6	-0.32	33	0.61	0.18
BW		Adj. WW		Adj. YW		Adj. REA		Adj. IMF		Adj. Fat
68		719		1269		12.42		3.031		0.33

- Ratio's an Impressive 85BW (15% below herd average ) 101 WW and 101YW
- AI sired by the proven and popular Calving Ease sire "LifeLine" who was good enough to win Denver
- Top 30% low Birth and top 30% yearling growth EPD's combined

## - ANGUS BULL -

## 110 DCSF POST ROCK BLK BAL 78E8

50%GV 50%AN Balancer Bull Double Black Double Polled  
2/9/2017 DCSF 78E8 1391727

S A V FINAL ANSWER 0035  
EGL EGL LIFELINE B101  
EGL ESTELLE X014  
SANDPOINT BUTKUS X797  
DCSF POST ROCK GRETA 9C8  
DCSF POST ROCK PASSION 229A2

\$COW	94.5
FPI	87.3
EPI	150.42

CED	BW	WW	YW	MK	TM	CEM	YG	CW	REA	MB
15	-0.3	87	134	17	60	9	-0.22	46	0.53	0.2
BW		Adj. WW		Adj. YW		Adj. REA		Adj. IMF		Adj. Fat
76		761		1348		13.09		2.94		0.37

- Outstanding individual ratio's 94 BW 10 WW 107 YW
- Top 15% CE 2% WW 2% YW EPD's combined that's not easy to do
- AI sired by the popular LIFELINE bull who's siring the good one's

## 111 DCSF POST ROCK BUTCUS 50E4 ET

Angus Bull Homozygous Black Homozygous Polled  
2/4/2017 DCSF 50E4 1406311

S A V FINAL ANSWER 0035  
SANDPOINT BUTKUS X797  
G A R GRID MAKER 4603  
S A V BISMARCK 5682  
EAGLE PASS MS BISMARCK 2045  
EGL MISS FRONTIER 4087

\$COW	86.02
FPI	95.79
EPI	142.1

CED	BW	WW	YW	MK	TM	CEM	YG	CW	REA	MB
23	-2.9	67	118	18	52	12	0.06	36	0.25	0.82
BW		Adj. WW		Adj. YW		Adj. REA		Adj. IMF		Adj. Fat
70		666		1264						

- Only Angus bull this year and a good one
- Top 1% Calving Ease 5% low Birth 10% Yearling weight and 1% Marbling EPD's
- ET son of the now deceased lead AI sire at Select Sires and out of our Angus Bismarck donor who's progeny ratio 93BW 106 WW





DCSF POST ROCK POWER BUILT 37B8 • 50% embryo interest in his dam sell as Lot 112.

## 112 DCSF POST ROCK WILMA 298Z8 ET

75%GV 25%AN Balancer Cow Double Black Homozygous Polled  
1/30/2012 DCSF 298Z8 1228419

TAU KRUGERRAND 70M  
TAU MR KRUGERRAND 70M 130P  
TAU MS COCO 052KA 437D  
BTI GRANITE 2135M  
DCSF POST ROCK WILMA 261P1 ET  
DCSF POST ROCK WILMA 147H ET

\$COW	70.08
FPI	77.08
EPI	171.57

CED	BW	WW	YW	MK	TM	CEM	YG	CW	REA	MB
6	2.4	90	145	25	70	7	-0.03	60	0.47	-0.06

**SELLING 50% EMBRYO INTEREST.** This is the Dam of Post Rock Power Built who topped our sale at \$26,000 to our friends at Circle S Ranch. He is proving to be a great breeding bull and is an increasingly popular AI sire in the industry. He sired the Reserve Champion Female at the American Royal, the Champion Futurity female in Louisville and the Supreme Champion bred and owned female at this year's Jr National in addition to 3 division winners in Denver this year to name a few. We encourage you to look over the Power Built sons selling. They are an extremely strong sire group with several lead herd sire prospects in the group that we simply want more of. Ninety percent of the purebred and high percentage cows we AI'd this year were to Power Built. We have a three studs and no duds rule before any cow can enter our donor program and 298Z8 has been running with the rest of the herd without special treatment and posted 95 BW 103 WW and 109 YW ratios on her natural progeny prior to entering embryo production this past spring. Her only other son to sell brought \$6,000. Her first 3 attempts at flushing resulted in only 1 embryo and very limited stimulation. Under the advisement of the SUN VALLEY Embryo center staff her calf was early weaned and they took a considerable amount of weight and flesh off of her and held her out of the rotation until she was lean and trim and switched drugs. Her last two flushes have resulted in 14 and 10 grade #1 and 2 embryos produced and they feel they now have her lined out for embryo production. For the strength of our program we know we need more 298Z8 production going forward and to honor our policy of selling ever sound six year old we are selling ½ embryo interest with no procession and she will remain in embryo production at Sun Valley. All cost while at the ET center will be split 50/50 with the new owner (housing, drugs, flushing, freezing, semen and misc.) and embryos will be split 50/50 prior to implantation. Sires selection will be by mutual agreement or by alternating flushes at the buyer's choice. At a future date when the Sun Valley staff feels it's necessary for her to have a natural calf before returning to embryo production the new owners cost while she is boarded at Post Rock will be \$1 day from the time she leaves the embryo center till she returns. All natural calves will be co-owned till weaning at which time a mutually agreed on marketing plan for the natural calves will be arrived at. If the agreed upon marketing plan for the natural calves is to be part of the Post Rock sale they will be handled like just like a current cooperator herd agreement animals. She missed picture day but we hope to have a video available. If you buy them by how they produce she has few Equals.





DCSF POST ROCK WILMA 294Z8 ET • Sells as Lot 113.



DCSF POST ROCK WILMA 340Z8 • Daughter of Lot 113.

## 113 DCSF POST ROCK WILMA 294Z8 ET

75%GV 25%AN Balancer Cow      Homozygous Black      Homozygous Polled  
1/23/2012      DCSF 294Z8      1228418

CTR GOOD NIGHT 4743P											
CTR GOOD NIGHT 880U											
CTR SWEET ELE 4150P											
BTI GRANITE 2135M											
DCSF POST ROCK WILMA 261P1 ET											
DCSF POST ROCK WILMA 147H ET											
CED	BW	WW	YW	MK	TM	CEM	YG	CW	REA	MB	
7	2.8	84	137	26	68	7	-0.43	55	0.43	-0.11	

Genomic enhanced EPDs.

This is Meredith's cow as she is known at Post Rock. She was named the 2013 Reserve Champion female in the Denver Junior Show at her first show. She later won four of the five shows she was exhibited at, including the AGJA Western Regionals. What an amazing physical specimen and awesome production and breeding tool she has become, producing back to back Supreme Champion Bred-and-Owned females at the two most recent Junior Nationals. This may be the first time it has happened in our breed. At the same time, she was filling our pastures with daughters so good we couldn't decide which one got shown and which one stayed home. Post Rock Wilma 340B8 was the first natural of Wilma 294Z8. She won all 5 shows Meredith showed her at in the spring 2016 including the AGJA Western Regionals in South Dakota and was the first of the 294Z8 daughters to win the Supreme Champion Bred-and-Owned female at the Dirt Road Classic Jr National in Stillwater Oklahoma. Post Rock Wilma 334D8 is an ET daughter of 294Z8 sired by Post Rock Power Built has been shown three times to date Winning Reserve Champion female at the always tough Kansas -Nebraska Jr show (the heifer that won Denver was champion to give you an idea of the level of competition) at 7 months of age and followed that up by being the second 294Z8 daughter to win Supreme Champion Bred and owned female at the Big Red Classic Jr National this past summer in Grand Island Nebraska. Most recently she was a popular Division champion in the open show at 2018 Denver National Western Stock show. Another Daughter of 294Z8, Post Rock Wilma 103D8 won the highly competitive Balancer spring heifer calf division in the 2017 Denver Jr. show her first time out and won the Kansas-Nebraska Jr. show this spring as well. This is the first of the 294Z8 to be shown, all are by different sires and all have competed at a high level. She has been flushed 10 times to date and has average 12.2 grade #1 and 2 embryos per flush with a range of 21 to 5 embryos. We are selling full interest full possession on 294Z8 However we would like very much to partner back if the buyer would like to do so at either the 50% or the 33% level by reducing the, purchase price by the level you want us to be partners at. Feel free to give us a call if you're interested in being partners. Find your own partner or partner with us but don't come up short on this kind .



DCSF POST ROCK WILMA 334D8 • Daughter of Lot 113.



DCSF POST ROCK WILMA 103D8 • Daughter of Lot 113.





DCSF POST ROCK WILMA 297Z8 ET • Sells as Lot 114.

## 114 DCSF POST ROCK WILMA 297Z8 ET

75%GV 25%AN Balancer Cow Double Black Homozygous Polled  
1/29/2012 DCSF 297Z8 1228460

CTR GOOD NIGHT 4743P	
CTR GOOD NIGHT 880U	\$COW 90.49
CTR SWEET ELE 4150P	FPI 73.42
BTI GRANITE 2135M	EPI 199.35
DCSF POST ROCK WILMA 261P1 ET	
DCSF POST ROCK WILMA 147H ET	

CED	BW	WW	YW	MK	TM	CEM	YG	CW	REA	MB
7	3.2	87	141	27	70	8	-0.07	59	0.38	-0.12

Flush sister to 294Z8 that's been an awesome producer in the pasture with a 103 WW and 103YW ratios in production. Never flushed but a power cow that's royally bred and pleasing to look at. She leaves 3 daughters in the herd and has 369 day calving interval.

AI: 4/30/2017 to EGL Game Changer D136 (1372783)

PE: 5/3/2017 to 8/9/2017 to Lazy TV Distinguished C136 (1325820)



DCSF POST ROCK WILMA 261P1 ET • Dam of Lots 112-116.

## 115 DCSF POST ROCK WILMA 295Z8 ET

75%GV 25%AN Balancer Cow Double Black Homozygous Polled  
1/24/2012 DCSF 295Z8 1228507

CTR GOOD NIGHT 4743P	
CTR GOOD NIGHT 880U	\$COW 83.02
CTR SWEET ELE 4150P	FPI 74.5
BTI GRANITE 2135M	EPI 198.33
DCSF POST ROCK WILMA 261P1 ET	
DCSF POST ROCK WILMA 147H ET	

CED	BW	WW	YW	MK	TM	CEM	YG	CW	REA	MB
8	2.1	85	140	29	72	7	-0.08	57	0.38	-0.12

The performance strong flush sister to 294Z8 that has an awesome 99BW ratio and 107 WW ratio in production This cow is big stout and impressive to view She's a fall calver with a top notch Astronaut bull calf at side She has 2 daughters in the herd and can be counted on to bring in a top calf

Lot 115A Black Polled Bull calf BD: 11/17/2017 BW: 82 TT: 390E1 Sire: Post Rock Astronaut 157A2 (1263322)

PE 12/28/2017 to 2/20/2018 to Lazy TV Distinguished C136 (1325820)

## 116 DCSF POST ROCK WILMA 296Z8 ET

75%GV 25%AN Balancer Cow Double Black Homozygous Polled  
1/25/2012 DCSF 296Z8 1228508

CTR GOOD NIGHT 4743P	
CTR GOOD NIGHT 880U	\$COW 92.95
CTR SWEET ELE 4150P	FPI 72.4
BTI GRANITE 2135M	EPI 195.28
DCSF POST ROCK WILMA 261P1 ET	
DCSF POST ROCK WILMA 147H ET	

CED	BW	WW	YW	MK	TM	CEM	YG	CW	REA	MB
7	3.1	86	137	31	74	7	-0.08	56	0.38	-0.16

Another power cow flush sister to 294Z8 with a 354 day calving interval and a awesome 111 WW ratio in production. Her son sold for \$5500 and this white uddered daughter of Post Rock Silvers mother represents some of the strongest growth genetics available in the Gelbvieh breed.

AI: 4/30/2017 to EGL Game Changer D136 (1372783)

PE: 5/3/2017 to 8/9/2017 to Post Rock Silver 273Y1 (1219935)



# 117 BDCG DC WILMA 147C1

50%GV 50%AR Balancer Cow Red Homozygous Polled  
1/2/2015 BDCG 147C1 1323072

LBC LMAN KING ROB 8621

TBP RAVISHING ROB 113

BJR BJR BLOCKANA 502-5185

BTI EXTRA 2106K ET

BDCG DC WILMA 147S1 ET

DCSF POST ROCK WILMA 147H ET

\$COW	113.24
FPI	72.17
EPI	93.29

CED	BW	WW	YW	MK	TM	CEM	YG	CW	REA	MB
10	1.3	77	113	23	61	6	0.08	39	0.01	0.03

At Dawson Creek, we treasure great cow families. Wilma 147C1 is an own daughter of Wilma 147S1....an AGA Dam of Merit in 2011, 2012, 2013, and 2014. Better yet, 147C1's granddam is the famous Wilma 147H donor. You cannot find a stronger cow family than the one this beautiful red, homozygous polled female hails from. She is super feminine and moderate framed  
Lot 117A Black Polled Bull calf BD: 1/13/2018 BW: 90 TT: BDCG 147F Sire: Young Gun C503 (1329053)

Sell Open



DCSF POST ROCK WILMA 147HET • Maternal grandam of Lots 112-119.

# 118 BDCG DC WILMA 147C11

Purebred 94% Gelbvieh Cow Black Homozygous Polled  
12/1/2015 BDCG 147C11 1344558

HYEK BLACK IMPACT 3960N

CCCJ MR IMPACT Z204

JEMG X405

BTI EXTRA 2106K ET

BDCG DC WILMA 147S1 ET

DCSF POST ROCK WILMA 147H ET

\$COW	94.48
FPI	64.91
EPI	93.46

CED	BW	WW	YW	MK	TM	CEM	YG	CW	REA	MB
12	3.2	76	108	28	66	6	-0.46	34	0.34	-0.29

Wilma 147C11 is a black, homozygous polled, purebred first calf heifer whose dam is a four-time AGA Dam of Merit! We love cow power and this heifer's dam, 147S1, ratios 105WW and 102YW as she raised nine calves in our herd! Purebred females with Wilma's powerful pedigree just aren't available around the country.  
PE: 4/23/2017 to 6/23/2017 to BDCG Crossbow 401C3 (1344209) a Bismarck X Darci son

# 119 DCSF POST ROCK WILMA 253Y1

Purebred 94% Gelbvieh Cow Double Black Homozygous Polled  
2/24/2011 DCSF 253Y1 1190565

BTI GRANITE 2135M

DCSF POST ROCK MASS APPEAL ET

DCSF POST ROCK TWILA 223M2

BTI EXTRA 2106K ET

DCSF POST ROCK WILMA 27S1 ET

DCSF POST ROCK WILMA 147H ET

\$COW	90.19
FPI	56.54
EPI	49.18

CED	BW	WW	YW	MK	TM	CEM	YG	CW	REA	MB
11	-0.7	55	73	22	49	9	-0.2	12	0.21	-0.21

Really moderate daughter of Mass Appeal who is a full brother to Post Rock Granite 200P2. She combines two of the strongest cow families at Post Rock and is the low birth acceptable growth kind of cow her EPDs indicate.  
AI: 4/30/2017 to VLK Young Gun C503 (1329053)  
PE: 5/3/2017 to 8/9/2017 to VLK Young Gun C503 (1329053)

# 120 DCSF POST ROCK WILMA 203D8

50%GV 47%AN Balancer Cow Double Black Double Polled  
3/2/2016 DCSF 203D8 1358292

DLW DLW EDISON 6718X

PLA POWER PLAY 14B

PLA MISS UPWARD 221Z ET

SHIPWHEEL CHINOOK

DCSF POST ROCK WILMA 10A8

DCSF POST ROCK WILMA 15Y2ET

\$COW	50.28
FPI	81.07
EPI	129.01

CED	BW	WW	YW	MK	TM	CEM	YG	CW	REA	MB
15	-0.9	78	109	26	65	9	-0.3	29	0.41	0.12

Ratio of 98 BW 117 WW 107 YW as an individual and sports awesome EPD's with top 10% CE and 15% WW. Her Dam is a top young cow that unfortunately we lost but ratio'd 92 BW 103 WW in production on her first 3 calves  
AI: 4/22/2017 Lazy TV Distinguished C136 (1325820)  
PE: 5/1/2017 to 9/15/2017 to Mill Brae Hoover Dam 4106 (AMAN17916596)

# 121 DCSF POST ROCK WILMA 315Y2

Purebred 94% Gelbvieh Cow Double Black Double Polled  
10/21/2011 DCSF 315Y2 1219903

MCFG MCF BRUCE ALMIGHTY 35PET

MCFG MIDDLE CREEK STAR 10S ET

MCFG COCOA'S KATI

BTI EXTRA 2106K ET

DCSF POST ROCK WILMA 276T2

DCSF POST ROCK WILMA 227P2 ET

\$COW	79.43
FPI	66.67
EPI	44.73

CED	BW	WW	YW	MK	TM	CEM	YG	CW	REA	MB
8	2	75	109	22	60	8	-0.25	38	0.58	-0.14

Awesome producing fall calver with a 96 BW 101 WW 107 YW ratios in production and a 352day calving interval. Her dam was a top cow as well and the Star daughters are held in high regard at Post Rock. Her son posted a 106 REA and 125 IMF ratio on ultra sound. Good cow selling with a herd bull at side  
Lot 121A Black Polled Bull calf BD: 11/10/2017 BW: 88 TT: 379E2 Sire: Post Rock Astronaut 157A2 (1263322)  
PE: 12/28/2017 to 2/20/2018 to Lazy TV Distinguished C136 (1325820)

## VIDEO AUCTION

Cowman's Kind 2018 production sale is changing to video auction procedure in the sale barn at Post Rock Cattle Co. All bulls and females will be viewed on large screen TV's inside the sale barn as each respective animal sells. All cattle will be displayed for viewing in the same pens as in past years. Please allow time in the pens to view the sale offering as they will not come to the sale ring.





MLG MEADOWLARK WILMA 04Z2 ET • Sells as Lot 122.

## 123 MLG MEADOWLARK WILMA 409Z

Purebred 94% Gelbvieh Cow Red Homozygous Polled  
3/2/2012 MLG 409Z 1228444

RID R COLLATERAL 2R										
BEA PASSION 001X ET										
BEA ELLA ET										
JEB POLLED GIZMO 17Z										
DCSF POST ROCK WILMA 272N2 ET										
DCSF POST ROCK WILMA 147H ET										
CED	BW	WW	YW	MK	TM	CEM	YG	CW	REA	MB
8	3.6	78	112	15	54	1	-0.24	41	0.27	-0.15

Maternal sister to lot 123 Keep in mind the 272N2 donor is a Gizmo daughter out of Top Brass's full sister Post Rock Wilma 147H2 and she's sired by the past Breeders Choice and National Champion Passion. This pedigree reads like the who's who of popular red Gelbvieh genetics.

Lot 123A Black Polled Heifer calf BD: 10/26/2017 BW: 80 TT: 374E2 Sire: Post Rock Astronaut 157A2 (1263322)  
PE: 12/28/2017 to 2/20/2018 to Lazy TV Distinguished C136 (1325820)



DCSF POST ROCK ASTRONAUT 157A • Sire of Lot 125.

## 126 DCSF POST ROCK WILMA 64D8

38%GV 53%AN Balancer Cow Double Black Homozygous Polled  
2/2/2016 DCSF 64D8 1358084

CONNEALY CONSENSUS 7229										
TAU UNANIMOUS 11B ET										
TAU MISS RODEO DRIVE 321N										
O C C MISSING LINK 830M										
DCSF POST ROCK WILMA 17Y8ET										
DCSF POST ROCK WILMA 261P1 ET										
CED	BW	WW	YW	MK	TM	CEM	YG	CW	REA	MB
8	2.9	79	126	25	64	4	-0.15	43	0.33	-0.06

Sired by the Balancer Futurity Champion Unanimous. Dam is a flush sister to last year's high selling female at \$8000. Lots of performance bred in with a 110 WW and 117 YW ratio as an individual. Her dam is one of our highest performers with a 105WW and 117YW ratio's on 5 calves.

AI: 4/22/2017 to Post Rock Power Built 37B8 (1288984)  
PE: 5/3/2017 to 8/9/2017 to Post Rock Power Stroke 95B1 (1291039)

## 122 MLG MEADOWLARK WILMA 04Z2 ET

Purebred 94% Gelbvieh Cow Red Homozygous Polled  
1/24/2012 MLG 04Z2 1237117

JCGR BAR GT FLASHBACK 410M ET										
RID R COLLATERAL 2R										
JCGR BAR GT LONI 27N ET										
JEB POLLED GIZMO 17Z										
DCSF POST ROCK WILMA 272N2 ET										
DCSF POST ROCK WILMA 147H ET										
CED	BW	WW	YW	MK	TM	CEM	YG	CW	REA	MB
8	1.9	64	91	27	59	2	-0.3	27	0.37	-0.04

Big stout and impressive daughter of 272N2 who's been a donor for both Meadowlark and Fourman Gelbvieh. Lots of great Gelbvieh genetics in this pedigree and she can certainly produce at the top of the herd. Dilutor free red, homozygous polled and good. Help yourself. AI: 4/30/2017 to Post Rock Astronaut 157A2 (1263322)  
PE: 5/3/2017 to 8/9/2017 to Post Rock Power Stroke 95B1 (1291039)

## 124 DCSF POST ROCK WILMA 115D8

50%GV 50%AN Balancer Cow Double Black Homozygous Polled  
2/11/2016 DCSF 115D8 1358213

MYTTY IN FOCUS										
TOG TWIN OAK FOCUS 277Y										
TOG TWIN OAK STAR 188W ET										
SHIPWHEEL CHINOOK										
MLG POST ROCK WILMA 429B ET										
DCSF POST ROCK WILMA 262P1 ET										
CED	BW	WW	YW	MK	TM	CEM	YG	CW	REA	MB
20	-4.3	68	103	30	64	11	-0.08	25	0.25	0.23

Top 1 % CE and BW combined with above breed average growth and carcass genetics. Individually she ratio's 78 BW with a 100 WW. 115D8 nursed an awesome first calf heifer and is backed by the great Wilma cow family  
AI: 4/22/2017 to JKGF Ditka C 85 (1322576)

PE: 5/1/2017 to 9/15/2017 to Mill Brae Hoover Dam 4106 (AMAN17916596)

## 125 DCSF POST ROCK WILMA 116D1

Purebred 88% Gelbvieh Cow Double Black Homozygous Polled  
2/12/2016 DCSF 116D1 1358214

JKGF FUTURE INVESTMENT X037										
DCSF POST ROCK ASTRONAUT 157A										
DCSF POST ROCK ELBA 50U2										
CTR GOOD NIGHT 880U										
DCSF POST ROCK WILMA 297Z8 ET										
DCSF POST ROCK WILMA 261P1 ET										
CED	BW	WW	YW	MK	TM	CEM	YG	CW	REA	MB
8	3.6	79	121	25	62	8	-0.28	41	0.3	-0.17

Individual ratio's of 116 WW and YW and a daughter of the feature lot 114. Lots of performance and strong genetics offered here.

PE: 5/1/2017 to 9/15/2017 to Mill Brae Hoover Dam 4106 (AMAN17916596)

## 127 DCSF POST ROCK WILMA 208D8

38%GV 52%AN Balancer Cow Double Black Homozygous Polled  
3/4/2016 DCSF 208D8 1358296

A A R TEN X 7008 S A										
MCFG ASTEROID 039A										
MCFG MIDDLE CREEK FORTUNE 2Y										
CTR GOOD NIGHT 880U										
DCSF POST ROCK WILMA 169Y8										
DCSF POST ROCK WILMA 253S8 ET										
CED	BW	WW	YW	MK	TM	CEM	YG	CW	REA	MB
10	0.9	80	131	21	61	7	-0.27	50	0.46	0.16

We try to offer the best bred heifers possible and if a top cow has at least 2 daughters in the herd we offer their daughter as feature bred heifer like this daughter of Asteroid. She ratio's 95 BW 100WW and 104YW.

AI: 4/22/2017 to JKGF Ditka C 85 (1322576)

PE: 5/1/2017 to 9/15/2017 to Mill Brae Hoover Dam 4106 (AMAN17916596)





CCRO MS C-CROSS EC / 7309T • Dam of Lots 128, 129.



DCSF POST ROCK TWILA 223M2 • Dam of Lots 130, 131.

## 128 TOG TWIN OAK ASTRONAUT 527D ET

Purebred 94% Gelbvieh Cow      Homozygous Black      Homozygous Polled  
7/31/2016      TOG 527D      1369724

JKGF FUTURE INVESTMENT X037

DCSF POST ROCK ASTRONAUT 157A

DCSF POST ROCK ELBA 50U2

FHG FLYING H EXCLUSIVE

CCRO MS C-CROSS EC / 7309T

FHG CAROLINA MS 3661L 5124R

\$COW	90.9
FPI	69.69
EPI	80.23

CED	BW	WW	YW	MK	TM	CEM	YG	CW	REA	MB
11	1.1	62	92	25	58	6	-0.55	26	0.47	0.13

Post Rock and Twin Oak purchased 7309T in the Fall of 2013. Lots 128 & 129 are flush mates to lots 1 & 2. 527D is a clean fronted moderate framed purebred. Genomic enhanced EPDs place her in top 1% for marbling and top 4% FPI Index. She sells confirmed bred AI to Epic a big time curve bender combining negative birth weight with top 1% growth Genetics.

AI: 11/4/2017 to Epic (AMAN17950219) No PE. Confirmed Safe.

## 129 TOG TWIN OAK ASTRONAUT 534D ET

Purebred 94% Gelbvieh Cow      Homozygous Black      Homozygous Polled  
8/7/2016      TOG 534D      1369731

JKGF FUTURE INVESTMENT X037

DCSF POST ROCK ASTRONAUT 157A

DCSF POST ROCK ELBA 50U2

FHG FLYING H EXCLUSIVE

CCRO MS C-CROSS EC / 7309T

FHG CAROLINA MS 3661L 5124R

\$COW	91.14
FPI	69.69
EPI	80.67

CED	BW	WW	YW	MK	TM	CEM	YG	CW	REA	MB
11	1.1	62	92	25	58	6	-0.55	26	0.47	0.13

527D and 534D will probably be the only two 7309T daughters to sell this year. 534D is a deep bodied, clean fronted heifer, flush mates were among the top selling bulls in last years sale. Genomic enhanced EPDs place her in top 1% for marbling and top 4% FPI Index.

Confirmed bred to the Angus bull Epic, whose progeny have made him one of the hottest bulls in the industry today.

AI: 11/3/2017 to Epic (AMAN17950219) No PE. Confirmed Safe.

## 130 DCSF POST ROCK TWILA 7928 ET

50%GV 50%AN Balancer Cow      Double Black      Double Polled  
2/12/2012      DCSF 7928      1252975

S A V 8180 TRAVELER 004

S A V NET WORTH 4200

S A V MAY 2410

MRCO NEW DIRECTION 905

DCSF POST ROCK TWILA 223M2

DCSF POST ROCK TWILA 3F2

\$COW	70.16
FPI	73.19
EPI	88.27

CED	BW	WW	YW	MK	TM	CEM	YG	CW	REA	MB
11	0	63	96	36	67	11	-0.05	27	0.39	0.24

An own daughter of 223M2. Two of her flush sisters are being used in breed leading programs as donors and she's been a top producer as well. The Net Worth X 223M2 flush has proven to be one of the best flushes ever at Post Rock. One of the best!

AI: 4/30/2017 to EGL Game Changer D136 (1372783)

PE: 5/3/2017 to 8/9/2017 to VLK Young Gun C503 (1329053)

## 131 TOG TWIN OAK WAYLON 528D ET

50%GV 50%AN Balancer Cow      Homozygous Black      Homozygous Polled  
8/3/2016      TOG 528D      1369725

GAR-EGL PROTEGE

BALDRIDGE WAYLON W34

BALDRIDGE BLACKCAP T163

MRCO NEW DIRECTION 905

DCSF POST ROCK TWILA 223M2

DCSF POST ROCK TWILA 3F2

\$COW	102.82
FPI	86.95
EPI	124.24

CED	BW	WW	YW	MK	TM	CEM	YG	CW	REA	MB
8	0.2	73	113	33	70	9	-0.49	37	0.57	0.51

Genomic enhanced EPDs.

ET Daughter of the famous 223M2 and the performance proven Angus sire Waylon that will be considered one of the best flushes that 223M2 ever produced. Be sure to look up flush brother's lot 15 thru 19. This stout, thick topped, deep bodied Homozygous Black and Homozygous Polled heifer has across the board strong performance and carcass Genomic enhanced EPDs. AI sire Ditka ranks in the top 4% in the breed for 7 DNA tested EPD traits.

AI 11/3/2017 to JKGF Ditka C85 (1322576) No PE, Confirmed Safe







DCSF POST ROCK TWILA 3922 • Sells as Lot 132.



DCSF POST ROCK TWILA 4228 • Sells as Lot 133.

### 134 DCSF POST ROCK TWILA 33D8

Purebred 94% Gelbvieh Cow	Double Black	Double Polled
1/27/2016	DCSF 33D2	1358052
DCSF POST ROCK SILVER 233U1		
DCSF POST ROCK SILVER 273Y1 ET		
DARC P401		
RID R COLLATERAL 2R		
DCSF POST ROCK TWILA 236Y2 ET		
DCSF POST ROCK TWILA 223M2		
CED	BW	WW
8	2.4	73
YV	MK	TM
111	21	57
CEM	YG	CW
4	-0.33	43
REA	MB	
0.43	-0.28	

EPD's predict lots of performance and this granddaughter of 223M2 is out of consistent year after year top producing young cow the kids showed to be a class winner at the Jr National. AI: 4/22/2017 to ICG Pay Raise 4886 (AMAN17974692) PE: 5/1/2017 to 9/15/2017 to Mill Brae Hoover Dam 4106 (AMAN17916596)

### 136 TOG TWIN OAK IN FOCUS 538D ET

50%GV 50%AN Balancer Cow	Homozygous Black	Heterozygous Polled
8/9/2016	TOG 538D	1369735
SAF FOCUS OF ER		
MYTTY IN FOCUS		
MYTTY COUNTESS 906		
MCFG MIDDLE CREEK STAR 10S ET		
TOG TWIN OAK STAR 191W ET		
DCSF POST ROCK TWILA 223M2		
CED	BW	WW
17	-2.6	65
YV	MK	TM
97	32	64
CEM	YG	CW
11	-0.33	23
REA	MB	
0.26	0.45	

Genomic enhanced EPDs. ET moderate framed, well muscled, thick made heifer sired by Mytty in Focus, and from the 223M2 cow family. Enough can not be said how well these Mytty in Focus daughters have performed over the years. This fall bred heifer will continue to follow the tradition with time tested genetics. Genomic enhanced EPDs place her in the top 4% for calving ease and top 10% for birth weight. Lot 32 a flush mate brother sells in this years sale. AI: 11/3/2017 to JKGF Ditka C85(1322576) No PE Confirmed safe

### 132 DCSF POST ROCK TWILA 3922

Purebred 94% Gelbvieh Cow	Double Black	Double Polled
1/24/2012	DCSF 3922	1228322
JRI EXTRA EXPOSURE 285L71 ET		
JRI GREAT WESTERN 254N68 ET		
JRI MS P BLACKBERRY 254K55ET		
MCFG MCF BRUCE ALMIGHTY 35PET		
DCSF POST ROCK TWILA 62X2 ET		
DCSF POST ROCK TWILA 223M2		
CED	BW	WW
10	2.1	72
YV	MK	TM
103	36	72
CEM	YG	CW
7	-0.17	34
REA	MB	
0.63	-0.33	

Really good 223M2 granddaughter who has a 108 Nursing ratio and 103 YW ratio on her four calves. Her only son sold for over \$2000 above the sale average and all her daughters were retained. One of the very best.

AI: 4/22/2017 to Post Rock Power Built 37B8 (1288984)

PE: 5/3/2017 to 8/30/2017 to Post Rock Astronaut 157A2 (1263322)

### 133 DCSF POST ROCK TWILA 4228

75%GV 25%AN Balancer Cow	Double Black	Homozygous Polled
2/5/2012	DCSF 4228	1228451
DMRS SARGE 635S		
DCSF POST ROCK SILVER 233U1		
DCSF POST ROCK WILMA 261P1 ET		
MYTTY IN FOCUS		
DCSF POST ROCK TWILA 29U8 ET		
DCSF POST ROCK TWILA 223M2		
CED	BW	WW
10	2	80
YV	MK	TM
130	30	70
CEM	YG	CW
7	-0.08	50
REA	MB	
0.42	-0.09	

Her dam served as a donor for J-Bar M and Sienknecht Cattle company and 4228 is donor quality as well. She is as stout and impressive as any cow selling and has left us 3 standout daughters and a son who sold for \$5750. Good cow that can produce a great one.

AI: 4/30/2017 to VLK Young Gun C503 (1329053)

PE: 5/3/2017 to 8/9/2017 to VLK Young Gun C503 (1329053)

### 135 TOG TWIN OAK TEN X 536D ET

50%GV 50%AN Balancer Cow	Homozygous Black	Homozygous Polled
8/7/2016	TOG 536D	1369733
MYTTY IN FOCUS		
A A R TEN X 7008 S A		
A A R LADY KELTON 5551		
MCFG MIDDLE CREEK STAR 10S ET		
TOG TWIN OAK STAR 188W ET		
DCSF POST ROCK TWILA 223M2		
CED	BW	WW
14	-0.5	74
YV	MK	TM
124	34	71
CEM	YG	CW
12	-0.54	43
REA	MB	
0.64	0.57	

Genomic enhanced EPDs.

ET daughter of Ten X and Twin Oak 188W. Study the Genomic enhanced EPDs. Strong growth and maternal EPDs along with top 3% Yield Grade and top 2% FPI Index. This stout big-ribbed Homozygous Black and Homozygous Polled heifer has top brood cow written all over her, she originates from the 223M2 family. Genomic enhanced EPDs place her in top 1% for marbling and top 4% FPI Index.

AI: 11/3/2017 to JKGF Ditka C85 (1322576) No PE Confirmed safe

### 137 DCSF POST ROCK WILMA 293Z2ET

Purebred 94% Gelbvieh Cow	Double Black	Double Polled
1/22/2012	DCSF 293Z2	1231847
DMRS SARGE 635S		
DCSF POST ROCK SILVER 233U1		
DCSF POST ROCK WILMA 261P1 ET		
MCFG MIDDLE CREEK STAR 10S ET		
TOG TWIN OAK STAR 148U ET		
DCSF POST ROCK TWILA 223M2		
CED	BW	WW
6	3	84
YV	MK	TM
132	33	75
CEM	YG	CW
7	-0.18	53
REA	MB	
0.6	-0.12	

Awesome Post Rock Silver daughter that ratio's 99BW 105WW 102YW 103 REA and 121 IMF on her 4 progeny. All 3 sons made the bull sale and sold well above the sale average and her only daughter serves as her replacement. Her dam was a donor for Post Rock and Twin Oak and is one of two daughters of 223M2 we ever flushed. Really good cow.

AI: 4/30/2017 to Post Rock Power Built 37B8 (1288984)

PE: 5/3/2017 to 8/9/2017 to Post Rock Power Stroke 95B1 (1291039)



## 138 DCSF POST ROCK TWILA 1728

50%GV 50%AN Balancer Cow	Double Black	Double Polled
1/15/2012	DCSF 1728	1228313
CONNEALY PRODUCT 568		
CONNEALY FINAL PRODUCT		
EBONISTA OF CONANGA 471		
DMRS SARGE 635S		
DCSF POST ROCK TWILA 41X2		
DCSF POST ROCK TWILA 180T2		
\$COW	80.29	
FPI	74.26	
EPI	134.73	

CED	BW	WW	YW	MK	TM	CEM	YG	CW	REA	MB
11	0.8	68	114	28	62	7	-0.1	39	0.54	0.19

Check out her powerhouse son lot 107 for proof of her production. This AI sired Final Product X 223M2 granddaughter is not only one of the best looking cows on the place but also one of the best producing. Her first son sold for \$6000 in a past sale.  
AI: 4/30/2017 to EGL Game Changer D136 (1372783)  
PE: 5/3/2017 to 8/15/2017 to EGL Game Changer D136 (1372783)



DCSF POST ROCK TWILA 1728 • Sells as Lot 138.

## 139 DCSF POST ROCK TWILA 156D2

Purebred 94% Gelbvieh Cow	Double Black	Double Polled
2/21/2016	DCSF 156D2	1358250
JKGF FUTURE INVESTMENT X037		
DCSF POST ROCK ASTRONAUT 157A		
DCSF POST ROCK ELBA 50U2		
JKGF FUTURE INVESTMENT X037		
DCSF POST ROCK TWILA 118A2		
DCSF POST ROCK TWILA 46X2 ET		
\$COW	71.08	
FPI	59.8	
EPI	39.91	

CED	BW	WW	YW	MK	TM	CEM	YG	CW	REA	MB
11	2.4	62	81	24	56	8	-0.41	20	0.35	-0.15

Astronaut daughter that posted a 102 weaning weight ratio as an individual Granddam is 223M2 for added maternal confidence.  
AI: 4/22/2017 to ICC Pay Raise 4886 (AMAN17974692)  
PE: 5/1/2017 to 9/15/2017 to Mill Brae Hoover Dam 4106 (AMAN17916596)



DCSF POST ROCK SILVER 233U1 • Sire of Lots 137, 142.

## 142 DCSF POST ROCK DARC 274Y1ET

Purebred 94% Gelbvieh Cow	Homozygous Black	Homozygous Polled
9/26/2011	DCSF 274Y1	1219945
DMRS SARGE 635S		
DCSF POST ROCK SILVER 233U1		
DCSF POST ROCK WILMA 261P1 ET		
XXB TITUS 880K		
DARC P401		
SLGB MISS POWER LINE		
\$COW	101.84	
FPI	67.32	
EPI	154.85	

CED	BW	WW	YW	MK	TM	CEM	YG	CW	REA	MB
5	4	86	131	26	68	2	-0.19	54	0.67	-0.28

This is a flush sister to our feature herd sire Post Rock Silver 273Y1 that we call "Shark". She has been a hard working cow that has an awesome 108 Nursing Ratio at Post Rock and always puts it all into her calf but maintains a 366 day calving interval. She sells with a big fall calf at side that will be among the best.  
Lot 142A Black Polled Bull calf BD: 11/16/2017 BW: 88 TT: 389E1 Sire: Post Rock Astronaut 157A2 (1263322)  
PE: 12/28/2017 to 2/20/2018 to Lazy TV Distinguished C136 (1325820)



## 140 DCSF POST ROCK TWILA 83Z2

Purebred 94% Gelbvieh Cow	Double Black	Double Polled
2/13/2012	DCSF 83Z2	1228456
SSL PLATINUM		
BEAS NEW ERA 687S		
BEAS 3044N		
BTI EXTRA 2106K ET		
DCSF POST ROCK TWILA 218S2		
DCSF POST ROCK TWDILA 163N2		
\$COW	95.75	
FPI	57.93	
EPI	62.65	

CED	BW	WW	YW	MK	TM	CEM	YG	CW	REA	MB
11	0.2	64	83	12	43	8	-0.15	19	0.15	-0.26

Her grandam produced a past high selling bull at over \$10,000. One of those cows that always seems to fly under the radar but always does her share to help pay the bills.  
AI: 4/30/2017 to Post Rock Power Built 37B8 (1288984)  
PE: 5/3/2017 to 8/9/2017 to Post Rock Power Stroke 95B1 (1291039)

## 141 DCSF POST ROCK TWILA 220Z2

Purebred 94% Gelbvieh Cow	Black	Double Polled
4/15/2012	DCSF 220Z2	1228399
MCFG MIDDLE CREEK STAR 10S ET		
DCSF POST ROCK STAR POWER ET		
DCSF POST ROCK WILMA 147H ET		
BTI EXTRA 2106K ET		
DCSF POST ROCK TWILA 9T2		
DCSF POST ROCK TWILA 98R2		
\$COW	62.6	
FPI	64.45	
EPI	67.02	

CED	BW	WW	YW	MK	TM	CEM	YG	CW	REA	MB
9	2.2	77	106	9	48	8	-0.23	35	0.4	-0.22

She has a 370 day calving interval but has some holes in her production charts due to having some misfortune. Always a consistent year after year steady producer that will be an asset to any operation.  
AI: 4/30/2017 to Post Rock Power Built 37B8 (1288984)  
PE: 5/3/2017 to 8/30/2017 to Post Rock Astronaut 157A2 (1263322)

## 143 DCSF POST ROCK DARC 64Z1ET

Purebred 94% Gelbvieh Cow	Black	Homozygous Polled
2/10/2012	DCSF 64Z1	1228505
JCGR BAR GT FLASHBACK 410M ET		
RID R COLLATERAL 2R		
JCGR BAR GT LONI 27N ET		
XXB TITUS 880K		
DARC P401		
SLGB MISS POWER LINE		
\$COW	86.45	
FPI	59.83	
EPI	50.21	

CED	BW	WW	YW	MK	TM	CEM	YG	CW	REA	MB
8	2.5	63	88	15	47	4	-0.3	26	0.53	-0.08

A full sister was the National Champion female in Denver a few years back for the Rae family. She's a member of the Darc tribe that is the only cow to have ever produced 2 Futurity champions. Homo Polled and royally bred  
AI: 4/30/2017 to Post Rock Power Built 37B8 (1288984)  
PE: 5/3/2017 to 8/30/2017 to Post Rock Astronaut 157A2 (1263322)





DCSF POST ROCK RHONDA 34Z8 • Sells as Lot 144.

## 144 DCSF POST ROCK RHONDA 34Z8

50%GV 50%AN Balancer Cow Double Black Double Polled  
1/21/2012 DCSF 34Z8 1293384

MYTTY IN FOCUS KCF BENNETT QUALITY FOCUSED K C F MISS QUALITY P164 DCSF POST ROCK MASS APPEAL ET										\$COW	86.37
DCSF POST ROCK RHONDA 303W2										FPI	84.86
DCSF POST ROCK RHONDA 217T2										EPI	151.25

CED	BW	WW	YW	MK	TM	CEM	YG	CW	REA	MB
15	1	75	119	33	71	8	0.01	42	0.23	0.42

Good looking hard working Quality Focused daughter that's one of the best. If you have followed the Post Rock program you know the demand for the Quality Focused sons including the current highly used AI sire Post Rock Highly Focused. His daughters are doing just as well in the pasture and are some of our top balancer cows including 34Z8. Good cow!

AI: 4/30/2017 to EGL Game Changer D136 (1372783)  
PE: 5/3/2017 to 8/9/2017 to Lazy TV Distinguished C136 (1325820)

## 145 DCSF POST ROCK RANI 350Y8

50%GV 50%AN Balancer Cow Double Black Double Polled  
12/4/2011 DCSF 350Y8 1219924

MYTTY IN FOCUS KCF BENNETT QUALITY FOCUSED K C F MISS QUALITY P164 JRI GREAT WESTERN 254N68 ET										\$COW	62.03
DCSF POST ROCK RANI 261W2										FPI	93.58
WVR RANI 594R										EPI	169.48

CED	BW	WW	YW	MK	TM	CEM	YG	CW	REA	MB
15	1.1	92	146	30	76	5	0.08	58	0.45	0.39

Big, stout and impressive Quality Focused daughter that's been a heck of a producer with a 108WW 105YW ratio's in production. Awesome EPD's tabulation to work with and she produces to the level of her stats. Really good cow

AI: 4/30/2017 to EGL Game Changer D136 (1372783)  
PE: 5/3/2017 to 8/15/2017 to EGL Game Changer D136 (1372783)



DCSF POST ROCK RANI 350Y8 • Sells as Lot 145.

## 146 DCSF POST ROCK BLKBIRD 358Y8

25%GV 75%AN Balancer Cow Homozygous Black Homozygous Polled  
12/17/2011 DCSF 358Y8 1219929

MYTTY IN FOCUS KCF BENNETT QUALITY FOCUSED K C F MISS QUALITY P164 DCSF POST ROCK BLK BAL 18P8										\$COW	
DCSF POST ROCK BLKBIRD 252W8										FPI	91.15
DCSF POST ROCK BLKBIRD 112P1										EPI	

CED	BW	WW	YW	MK	TM	CEM	YG	CW	REA	MB
18	-0.3	74	127	30	67	9	0.12	46	0.16	0.61

Another Quality Focused another top producing cow with a 97 BW 103 WW ratio in production. 358Y8 comes from a long line of top producing females with her dam having 100 BW 111 WW ratio's. The kind of cow every ranch needs more of.

AI: 4/30/2017 to VLK Young Gun C503 (1329053)  
PE: 5/3/2017 to 8/9/2017 to Lazy TV Distinguished C136 (1325820)

## 147 DCSF POST ROCK 101X1 108Z8

50%GV 50%AN Balancer Cow Double Black Homozygous Polled  
2/18/2012 DCSF 108Z1 1228349

MYTTY IN FOCUS KCF BENNETT QUALITY FOCUSED K C F MISS QUALITY P164 JRI GREAT WESTERN 254N68 ET										\$COW	
DCSF POST ROCK 125R6 101X1										FPI	84.08
DCSF POST ROCK 125R6 33T1										EPI	

CED	BW	WW	YW	MK	TM	CEM	YG	CW	REA	MB
16	0.9	74	120	28	65	8	0.1	43	0.36	0.44

Good looking good producing cow that has top 10% Calving Ease 10% growth and 20% marbling EPD's. These Quality Focused daughters have been really top end cows in our program and certainly produce to their strong genetic tabulations.

AI: 4/30/2017 to EGL Game Changer D136 (1372783)  
PE: 5/3/2017 to 8/15/2017 to EGL Game Changer D136 (1372783)

## 148 DCSF POST ROCK BLUEBIRD 307Y

25%GV 75%AN Balancer Cow Homozygous Black Homozygous Polled  
10/17/2011 DCSF 307Y8 1219897

MYTTY IN FOCUS KCF BENNETT QUALITY FOCUSED K C F MISS QUALITY P164 DCSF POST ROCK BLK BAL 18P8										\$COW	
DCSF POST ROCK BLUEBIRD 241W8										FPI	88.37
DCSF POST ROCK BLUEBIRD 72N1										EPI	

CED	BW	WW	YW	MK	TM	CEM	YG	CW	REA	MB
17	0	70	117	23	58	8	0.07	40	0.28	0.66

Check out her son lot 98 as proof of her production. He jumps off the page at you and in person as well with herd bull ratios of 93 BW 106 WW 115 YW 108 REA 102 IMF. Balancer cows like this are an amazing production machine, small calves at birth, exceptional growth, awesome carcass merit and yet moderate in mature cow size. Over 30 years of focused selective breeding back her up.

AI: 4/30/2017 to VLK Young Gun C503 (1329053)  
PE: 5/3/2017 to 8/9/2017 to Lazy TV Distinguished C136 (1325820)

## 149 DMS STUCKYS YESSICA

25%GV 75%AN Balancer Cow Double Black Double Polled  
1/20/2011 DMS 025MTY 1182445

SAF FOCUS OF ER MYTTY IN FOCUS MYTTY COUNTESS 906 SITZ ALLIANCE 6595										\$COW	94.3
DMS STUCKY TRACY										FPI	82.18
DMS STUCKYS MARISSA										EPI	151.75

CED	BW	WW	YW	MK	TM	CEM	YG	CW	REA	MB
15	-2.2	61	93	29	59	8	0.06	22	0.13	0.55

Stuckys Yessica is one of our favorites. We have kept all 3 of her daughters to improve our herd. Two are in production both have excellent udders. Yessica is a maternal sister to the AI sire Stuckys Trustee who's daughters have been performing well themselves. She carries the maternal, calving ease and carcass strength EPD's. Top 4% MB top 10% BW, HP, ST, ADG, FPI, EPI & top 15% CE and \$cow.

PE: 4/28/2017 to 9/2/2017 to Stuckys Bismark ET (1301999) Safe early March calf



## 150 BDCG DC ARATA 39Z7

Purebred 88% Gelbvieh Cow					Double Black		Double Polled			
9/9/2012					BDCG 39Z7		1242083			
RID R COLLATERAL 2R										
BDCG PMFG CHIEF EXECUTIVE10U1									\$COW	82.65
BDCG DC WILMA 10N2 ET										
EBY WESTERN HAULER 028S										
BDCG DC ARATA 39X7									FPI	69.41
BDCG DC ARATA 39T3									EPI	72.32
CED	BW	WW	YW	MK	TM	CEM	YG	CW	REA	MB
10	0.5	72	103	13	48	4	-0.2	31	0.47	0

Arata 39Z7 is a moderate, soggy middled purebred cow from the Arata 39F2 cow family. Sired by Breeder's Choice Futurity Runner-up, Chief Executive, 39Z7 is backed by donor cows on both sides of her pedigree. Maternal strength in this fall-bred cow! Raising a 64 pound Black Bull Calf by JRI General Patton. The General Patton-sired calves have been really strong for us.

Lot 150 Black Polled Bull Calf BD: 9/22/2017 BW: 64 TT: 39E2 Sire: JRI General Patton (1282553) AI: 11/20/17 to ICC ICC Pay Raise 4886 (AMAN17974692) PE: 12/17/2017 to 2/17/2018 to SDCG 7326D (1386467)



BDCG DC BUSINESSMAN 401B ET • Sire of Lot 154.

## 154 BDCG DC REBA S56D2 ET

50%GV 31%AR 13%AN Balancer Cow						Black		Homozygous Polled		
6/19/2016						BDCG S56D2		1355380		
JRI TOP PRODUCER 282Z3										
BDCG DC BUSINESSMAN 401B ET								\$COW	86.65	
									DARC P401	
AHL REBA 56S								FPI	62.4	
									JTKD AHL YUKON N344	
AHL AHL NA329								EPI	67.46	
CED	BW	WW	YW	MK	TM	CEM	YG		CW	REA
8	2.1	60	84	10	41	2	-0.36	22	0.23	0.06

Reba S56D2 is an incredibly cool made homozygous polled black fall Balancer heifer out of the great Reba National Champion Female. We absolutely love how smooth this heifer is and think that she has a world of potential! Her sire, Businessman, is the Peoples Choice Futurity Champion and out of the standout P401 (Darci) donor. This heifer represents a very rare genetic opportunity. This heifer has the pedigree and the look to be a goldmine.

AI: 11/20/2017 to EGL Lifeline B101(1298079)  
PE: 12/17/2017 to 02/17/2018 to SDCG 7326D (1386467)

## 151 BDCG DC ARATA 39D1

38%GV 62%AN Balancer Cow						Double Black		Double Polled				
1/3/2016						BDCG 39D1		1354868				
SYDGEN C C & 7												
HOOVER DAM											\$COW	86.04
											FPI	82.07
BDCG DC ARATA 39A12											EPI	100.35
BDCG DC ARATA 39W4												
CED	BW	WW	YW	MK	TM	CEM	YG	CW	REA	MB		
13	-0.2	65	110	31	63	8	-0.15	36	0.51	0.49		

Arata is a beautiful she is sharp fronted, big bodied, and moderate framed. This Hoover Dam daughter combines elite maternal and carcass performance with top 25% of the breed YW EPD's! We have every confidence that Arata is going to be a top cow when she gets in production.

PE 3-12-17 to 5-4-17 to BDCG Crossbow 401C3 (1344209). Safe in Calf

## 152 BDCG DC ARATA 39B1

75%GV 25%AR Balancer Cow						Red	Double Polled									
1/1/2014						BDCG 39B1	1290300									
DDM MR SHERMAN TANK																
BDCG SHERMIT						<table><tr><td>\$COW</td><td></td></tr><tr><td>FPI</td><td>58.78</td></tr><tr><td>EPI</td><td></td></tr></table>					\$COW		FPI	58.78	EPI	
\$COW																
FPI	58.78															
EPI																
OGC HUTCHENS COW 225B																
OHRR OHRR DAKOTA COPPER 29K																
BDCG DC ARATA 39U5																
BDCG DC ARATA 39P5 ET																
CED	BW	WW	YW	MK	TM	CEM	YG	CW	REA	MB						
9	1.1	62	94	30	62	8	-0.24	28	0.3	-0.26						

Arata 39B1 is a calf raising machine! The BDCG Shermit (Sherman Tank X Polled Summit) daughters are really nice and very maternal purebred cattle. They raise big calves and breed back early!

Lot 152A Black Polled Heifer calf BD: 11/12/2017 BW:70 TT:BDCG 39E4 Sire: RROG Belly Buster (1296184)

AI: 1/1/2018 to EGL Game Changer D136 (1372783)  
PE: 1/14/2018 to 2/17/2018 to SDCG 7326D (1386467)

## 155 BDCL DC ARATA 39D6

50%GV 38%AN Balancer Cow						Double Black		Double Polled		
9/10/2016						BDCL 39D6		1386673		
CONNEALY CONSENSUS 7229										
TAU UNANIMOUS 11B ET		TAU MISS RODEO DRIVE 321N							\$COW	97.6
		SDCG X-FACTOR 202X								
		BDCG DC ARATA 39Z8								
BDCG DC ARATA 39Z8		BDCG DC ARATA 39U1							FPI	64.83
									EPI	49.47
CED	BW	WW	YW	MK	TM	CEM	YG	CW	REA	MB
9	0.2	63	91	27	58	4	-0.23	25	0.21	-0.04

Arata is a moderate framed, soggy made fall bred heifer. There is no mistaking the fact that she has mother cow written all over her. Her dam ratios 93BW, 102WW, and 103YW! This cow family just plain raises big calves and breeds back early. Arata 39F2 left us a raft of females to replace her. These fall bred heifers are a great way to get into genetics that you may never otherwise have the opportunity to purchase. Buy them with confidence!

AI: 12/12/2017 to EGL Game Changer D136 (1372783)  
PE: 12/17/2017 to 02/17/2018 to SDCG 7326D (1386467)

## SPRING CALVING INFORMATION

Calving information will be updated weekly and posted on MMS.bz every Friday beginning Friday, February 9th, or you may call our office for the weekly update as well.



## Cowman's Kind FEMALES



DCSF POST ROCK GWEN 13Z8 • Sells as Lot 156.



DCSF POST ROCK BARB 312Y8 • Sells as Lot 158.

### 158 DCSF POST ROCK BARB 312Y8

50%GV 50%AN Balancer Cow      Homozygous Black      Homozygous Polled  
10/21/2011      DCSF 312Y8      1219944

JRI EXTRA EXPOSURE 285L71 ET  
JRI GREAT WESTERN 254N68 ET  
JRI MS P BLACKBERRY 254K55ET  
ALBERDA TRAVELER 416  
K M BARB 1169  
K M BARB 1343

\$COW	
FPI	61.92
EPI	

CED	BW	WW	YW	MK	TM	CEM	YG	CW	REA	MB
8	3	59	89	21	51	1	0	27	0.25	0.13

Payed a lot of money to add her Alberta Traveler Angus dam to our program to start a new cow family in our Balancer herd and one look at her daughter proved it was probably worth it. Awesome looking cow that can raise a great one.

AI: 4/30/2017 to EGL Game Changer D136 (1372783)

PE: 5/3/2017 to 8/9/2017 to Lazy TV Distinguished C136 (1325820)

### 160 SDCG MS 202B3 ET

25%GV 66%AN Balancer Cow      Double Black      Homozygous Polled  
1/1/2014      SDCG 202B3      1290349

G A R GRID MAKER  
S A V BISMARK 5682  
S A V ABIGALE 0451  
GRU JUST RIGHT 710J  
GRU MS RIGHT 202M  
GRU MS RAIDER 074K

\$COW	67.93
FPI	70.47
EPI	72.49

CED	BW	WW	YW	MK	TM	CEM	YG	CW	REA	MB
16	-0.7	61	89	24	55	7	-0.1	22	0.38	0.14

An excellent opportunity to own a Homozygous Polled daughter of our GRU 202M donor, which is the dam of SDCG X-Factor 202X, the 2011 Balancer Bull Futurity Champion. The 202 cow family excels in moderate framed, big ribbed, calving ease genetics. Several maternal sibs are working for registered herds across the country.

Lot 160A Black Polled Heifer calf BD: 10/15/2017 BW: 62 TT: 202E4 Sire 3G Zipline 266Z

AI: 11/30/17 to VLK C503 Young Gun (1329503)

PE: 12/17/2017 to 2/17/18 to SDCG 7326D (1386467)

page 38

### 156 DCSF POST ROCK GWEN 13Z8

50%GV 50%AN Balancer Cow      Double Black      Homozygous Polled  
1/14/2012      DCSF 13Z8      1228404

TC GRIDIRON 258  
S A V IRON MOUNTAIN 8066  
S A V MADAME PRIDE 3249  
JRI GREAT WESTERN 254N68 ET  
DCSF POST ROCK GWEN 130X1 ET  
DCSF POST ROCK GWEN 33P1 ET

\$COW	70.28
FPI	73.55
EPI	114.46

CED	BW	WW	YW	MK	TM	CEM	YG	CW	REA	MB
11	0	67	109	22	55	9	-0.03	35	0.32	0.19

Outstanding Iron Mountain daughter who has 92 BW 102 WW ratio's in production. This cow is as impressive as anything selling and the kids have shown 2 of her daughters and her son went to Denver to represent our program this year. Awesome cow that deserves to be a donor.

AI: 4/30/2017 to EGL Game Changer D136 (1372783)

PE: 5/3/2017 to 8/15/2017 to EGL Game Changer D136 (1372783)

### 157 DCSF POST ROCK BLUBIRD 18Z8

25%GV 75%AN Balancer Cow      Double Black      Double Polled  
1/16/2012      DCSF 18Z8      1228314

CONNEALY CONSENSUS  
CONNEALY CONSENSUS 7229  
BLUE LILLY OF CONANGA 16  
DCSF POST ROCK BLK BAL 18P8  
DCSF POST ROCK BLUBIRD 39X8  
DCSF POST ROCK BLUEBLOOD 27J1

\$COW	
FPI	77.34
EPI	

CED	BW	WW	YW	MK	TM	CEM	YG	CW	REA	MB
11	1.1	60	97	24	54	4	-0.07	30	0.33	0.56

We were early users of the Angus AI sire Connealy Consensus 7229 and daughters like this have been his hallmark. All 3 daughter retained and her son sold for \$5250 Good cow that pays more than her share of the bills.

AI: 4/30/2017 to VLK Young Gun C503 (1329053)

PE: 5/3/2017 to 8/9/2017 to VLK Young Gun C503 (1329053)

### 159 DCSF POST ROCK BLK BIRD 20Z8

38%GV 51%AN Balancer Cow      Homozygous Black      Homozygous Polled  
1/17/2012      DCSF 20Z8      1228315

JRI GREAT WESTERN 254N68 ET  
EBY WESTERN HAULER 028S  
LYONS DELIA BEAUTY 2028  
DDF MR CHUNKY 515R  
DCSF POST ROCK BLK BIRD 93X8  
DCSF POST ROCK BLK BIRD 64T8

\$COW	
FPI	74.16
EPI	

CED	BW	WW	YW	MK	TM	CEM	YG	CW	REA	MB
8	0.1	65	110	23	55	7	-0.03	36	0.44	0.29

Big cow that sells with a big fall calf at side. AI sired by the popular AI sire Western Hauler she can always be counted on to bring a big calf.

Lot 159A Black Polled Bull calf BD: 10/13/2017 BW: 89 TT: 345E8 Sire: Post Rock Astronaut 157A2 (1263322)

PE: 12/28/2017 to 2/20/2018 to Lazy TV Distinguished C136 (1325820)

### 161 DCSF POST ROCK WINDY 1Z8

25%GV 75%AN Balancer Cow      Double Black      Homozygous Polled  
1/7/2012      DCSF 1Z8      1228302

G A R GRID MAKER  
S A V BISMARK 5682  
S A V ABIGALE 0451  
KCF BENNETT QUALITY FOCUSED  
DCSF POST ROCK WINDY 78X8  
DCSF POST ROCK WINDY 165R2

\$COW	81.29
FPI	87.59
EPI	129.49

CED	BW	WW	YW	MK	TM	CEM	YG	CW	REA	MB
18	-1.2	78	124	22	61	9	0.05	42	0.41	0.37

Bismarck daughter that traces back to the ABS sire Fullback on the maternal side. She's certainly been a good cow for us and we expect her to be for her new owners for many years too. Top 3% CE with top 5% growth and 10 % marbling EPD's. It takes Years of disciplined genetic mating's to build as many strong EPD's cow as you can annually find in the Post Rock Sale.

AI: 4/30/2017 to VLK Young Gun C503 (1329053)

PE: 5/3/2017 to 8/9/2017 to VLK Young Gun C503 (1329053)





## 162 DCSF POST ROCK ELBA 168Z2

Purebred 94% Gelbvieh Cow	Double Black	Double Polled
3/9/2012	DCSF 168Z2	1228357
CTR HIGHLIGHT 066K		
GBNR BAR NONE CAPTAIN 42XET		
EGL P016 ET		
MCFG MIDDLE CREEK STAR 10S ET		
DCSF POST ROCK ELBA 50U2		
DCSF POST ROCK ELBA 19R1		
CED	BW	WW
7	2.7	82
YW	MK	TM
123	18	59
CEM	YG	CW
8	-0.04	47
REA	MB	
0.42	-0.04	

This ones special, an own daughter of Post Rock Astronaut's dam. As stout and impressive as any purebred cow selling and royally bred. We had a visitor in the fall make the comment "WOW that cow is three corn rows wide " when he seen her in the stalk field. Good cow!  
AI: 4/30/2017 to CTR Wide Track 3706A (1306804)  
PE: 5/3/2017 to 8/9/2017 to Post Rock Power Stroke 95B1 (1291039)



DCSF POST ROCK ELBA 50U2 • Dam of Lot 162.

## 163 DCSF POST ROCK ELLIE 169Z8

50%GV 44%AN Balancer Cow	Double Black	Double Polled
3/9/2012	DCSF 169Z8	1228358
DDF MR NORTH BALANCER 309N		
DDF MR CHUNKY 515R		
DDF MS 616 107L		
MCFG MIDDLE CREEK STAR 10S ET		
DCSF POST ROCK ELLIE 71U8		
DCSF POST ROCK BLKBIRD 211P1		
CED	BW	WW
6	0.4	56
YW	MK	TM
86	25	53
CEM	YG	CW
7	-0.07	22
REA	MB	
0.36	0.15	

Among the last of the Chunky daughters in the herd and what a foundation they have been for our Balancer herd. Cows like 169Z8 tend to get overlooked but she covers all the bases of efficient beef production and can do it for many more years.  
PE: 5/15/2017 to 8/1/2017 to Post Rock Blk Bal 57D8 (1358079) 57D8 is a son of EGL Roundhouse.

## 164 DCSF POST ROCK BIGGS 114Z8

38%GV 53%AN Balancer Cow	Double Black	Double Polled
2/19/2012	DCSF 114Z8	1228453
DDF MR NORTH BALANCER 309N		
DDF MR CHUNKY 515R		
DDF MS 616 107L		
DCSF POST ROCK 2106 93S2		
BIGG BLACK BALANCER 104U		
WOLF CREEK JUICE 3720		
CED	BW	WW
4	1.8	64
YW	MK	TM
106	24	56
CEM	YG	CW
6	0.11	36
REA	MB	
0.08	0.16	

Low maintenance problem free kind of cow that gets it done every year with a 371 day calving interval and a 97 BW and 99 WW 103 YW ratio in production. We annually calve over 120 heifers and by the time they are 6 years old when we sell every sound cow as a sale feature, fewer than half usually remain These are the cows that have made it thru all the hoops.  
PE: 5/15/2017 to 8/1/2017 to Post Rock Blk Bal 57D8 (1358079) 57D8 is a son of EGL Roundhouse.

## 165 DCSF POST ROCK BLACKCAP 335Y

38%GV 53%AN Balancer Cow	Homozygous Black	Homozygous Polled
11/8/2011	DCSF 335Y8	1219918
DDF MR NORTH BALANCER 309N		
DDF MR CHUNKY 515R		
DDF MS 616 107L		
DMRS SARGE 635S		
DCSF POST ROCK BLACKCAP 219U8		
ANKONY BLACKCAP B003		
CED	BW	WW
6	0.7	51
YW	MK	TM
87	30	55
CEM	YG	CW
5	-0.05	24
REA	MB	
0.4	0.24	

Among the last of the always problem free productive Chunky daughters. Chunky daughters are always big bodied easy fleshing cows with good udders and big calves at their side. 335Y8 certainly fits that mold.  
AI: 4/30/2017 to Balancer Futurity Champion JRI Probity 254D28 (1351990)  
PE: 5/3/2017 to 8/15/2017 to EGL Game Changer D136 (1372783)

## 166 DCSF POST ROCK BLK BAL 97Z8

50%GV 47%AN Balancer Cow	Double Black	Homozygous Polled
2/15/2012	DCSF 97Z8	1228506
C A FUTURE DIRECTION 5321		
DCSF POST ROCK FD 261S8 ET		
DCSF POST ROCK BLKBIRD 97J2		
EBY WESTERN HAULER 028S		
DCSF POST ROCK BLK BAL 13X8		
DCSF POST ROCK BLK BAL 117U8		
CED	BW	WW
12	0.2	58
YW	MK	TM
84	27	56
CEM	YG	CW
4	-0.1	20
REA	MB	
0.49	0.37	

Calving ease, problem free daughter of FD 261S8 who has a son selling as lot 83. She comes from a long line of productive females as her dam ratio's 97 BW 107 WW during her stay at Post Rock.  
AI: 4/30/2017 to EGL Game Changer D136 (1372783)  
PE: 5/3/2017 to 8/15/2017 to EGL Game Changer D136 (1372783)

## 167 ELC MISS JORDYN

63%GV 37%AN Balancer Cow	Double Black	Double Polled
4/1/2012	ELC 21Z	1227326
HYEK BLACK IMPACT 3960N		
GRU GRU IMPACT 850X		
GRU MS TOTAL 850U		
G A R PREDESTINED		
GRU MS PREDESTINED 970W		
GRU MS FORCE 921J		
CED	BW	WW
10	0.4	60
YW	MK	TM
89	18	48
CEM	YG	CW
8	-0.12	24
REA	MB	
0.44	0.58	

Purchased this cow at the Kansas Gelbvieh Association "Pick of the Herd's " sale. She was a nice show heifer for the kids and has been a solid cow for us as well.  
AI: 4/30/2017 to VLK Young Gun C503 (1329053)  
PE: 5/3/2017 to 8/9/2017 to VLK Young Gun C503 (1329053)

## 168 DMS STUCKYS ZILLIONAIR

25%GV 75%AN Balancer Cow	Double Black	Homozygous Polled
1/1/2012	DMS 211PZ	1216534
SCR PROMISE 4042		
SYDGEN TRUST 6228		
SYDGEN FOREVER LADY 4413		
DCSF POST ROCK POWER CAT ET		
DCSF POST ROCK BLKBIRD 211P1		
ANGUS COW 101F4		
CED	BW	WW
14	-3.9	52
YW	MK	TM
86	24	50
CEM	YG	CW
4	-0.22	16
REA	MB	
0.49	0.54	

Stucky Gelbvieh picked her dam from the 2011 Cowman's Kind sale and promptly Aled her to the popular ABS sire SYDGEN Trust which resulted in Stucky's Zillionair. Stucky beef genetics rarely shows cattle but if we did Zillionair could have been tough competition as she is as impressive as they come. EPD's top 2% BW top 10% MB 20% FPI and top 25% CED, DMI, YG, FT, and ADG.  
PE: 3/4/2017 to 8/1/17 to Balancer Futurity Champion TTTT Mighty Hot ET (1317197) Safe for late March Calf.





DCSF POST ROCK ELLIE 4728 • Sells as Lot 169.

## 170 DCSF POST ROCK RAVENMERE 52Z8

50%GV 50%AN Balancer Cow Homozygous Black Homozygous Polled  
2/9/2012 DCSF 52Z8 1228329

CTR GOOD NIGHT 4743P	
CTR GOOD NIGHT 880U	
CTR SWEET ELE 4150P	
DCSF POST ROCK BLK BAL 18P8	
DCSF POST ROCK RAVENMERE 98T8	
DCSF POST ROCK RAVENMERE 114P1	

CED	BW	WW	YW	MK	TM	CEM	YG	CW	REA	MB
9	2.3	69	113	18	52	6	-0.06	41	0.28	0.09

Daughter of CTR Good Night 880U, the sire of our 294Z8 donor who left us some stout made easy fleshing daughters and top selling bulls in his only calf crop. Solid producing consistent cow who has a son selling as lot 80 as proof of her producing ability.

AI: 4/30/2017 to EGL Game Changer D136 (1372783)

PE: 5/3/2017 to 8/9/2017 to Lazy TV Distinguished C136 (1325820)

## 172 DCSF POST ROCK MANDY 165Z8

38%GV 44%AN 13%AR Balancer Cow Double Black Double Polled  
3/8/2012 DCSF 165Z8 1228356

TAU MR KRUGERRAND 70M 130P	
BDCG DC STOCKMAN 56W4 ET	
AHL REBA 56S	
MYTTY IN FOCUS	
DCSF POST ROCK MANDY 14U8	
DCSF POST ROCK MANDY 56S2	

CED	BW	WW	YW	MK	TM	CEM	YG	CW	REA	MB
8	2.4	72	113	20	56	8	0.01	41	0.1	0.34

Her dam will always be remembered as one of our all time best Mytty In Focus daughters. This cow has a hole in her production chart thru no fault of her own. She can always be counted on to bring in a top calf.

PE: 5/3/2017 to 8/9/2017 to VLK Young Gun C503 (1329053)

## 174 DCSF POST ROCK QUEEN 69Z8

38%GV 44%AN 13%AR Balancer Cow Double Black Homozygous Polled  
2/11/2012 DCSF 69Z8 1228335

TAU MR KRUGERRAND 70M 130P	
BDCG DC STOCKMAN 56W4 ET	
AHL REBA 56S	
DCSF POST ROCK BLK BAL 18P8	
DCSF POST ROCK QUEEN 84U8	
DCSF POST ROCK QUEEN 81N1	

CED	BW	WW	YW	MK	TM	CEM	YG	CW	REA	MB
8	1.5	66	106	21	54	4	-0.01	36	0.14	0.25

Ratios 91 BW 107WW and 108 YW in production. Check out her son who sells as lot 100 to get an idea of her producing ability. Progeny who can ratio 106 at weaning and 110 at yearling in competitive contemporary groups are cows every ranch needs more of. Every daughter retained!

AI: 4/30/2017 to Balancer Futurity Champion JRI Probity 254D28 (1351990)

PE: 5/3/2017 to 8/9/2017 to Lazy TV Distinguished C136 (1325820)

## 169 DCSF POST ROCK ELLIE 47Z8

50%GV 50%AN Balancer Cow Double Black Double Polled  
2/6/2012 DCSF 47Z8 1231089

TAU KRUGERRAND 70M	
TAU MR KRUGERRAND 70M 130P	
TAU MS COCO 052KA 437D	
MYTTY IN FOCUS	
DCSF POST ROCK ELLIE 12X8	
DCSF POST ROCK ELLIE 70U2	

CED	BW	WW	YW	MK	TM	CEM	YG	CW	REA	MB
14	-1.3	69	111	31	66	6	-0.02	34	0.22	0.3

Outstanding Krugerrand daughter that ratio'd 96 BW 106 WW and 103 YW on her progeny. Her Young Gun son born last spring was one of the best we've ever raised and was headed to Denver before we lost him. Generation upon Generation of the best at Post Rock back this cow up. Donor cow prospect

AI: 4/30/2017 to VLK Young Gun C503 (1329053)

PE: 5/3/2017 to 8/9/2017 to VLK Young Gun C503 (1329053)

## 171 DCSF POST ROCK BLACKBIRD 131Z

38%GV 44%AN 13%AR Balancer Cow Homozygous Black Homozygous Polled  
2/25/2012 DCSF 131Z8 1228436

TAU MR KRUGERRAND 70M 130P	
BDCG DC STOCKMAN 56W4 ET	
AHL REBA 56S	
BTI GRANITE 2135M	
DCSF POST ROCK BLACKBIRD 34T8	
K M BLACKBIRD 136	

CED	BW	WW	YW	MK	TM	CEM	YG	CW	REA	MB
10	-1.5	63	101	25	56	9	0.05	28	0.08	0.34

Good cow selling here with a 97 BW 101 WW ratio in production. Each year I'm usually asked how we have so many high ratioing cows selling in our annual dispersal of all our sound six year olds. Answer we usually calve 85 spring heifers and 35 fall heifers and then by the time they are 6 years old less than half remain due to the constant culling and selection pressure.

AI: 4/30/2017 to VLK Young Gun C503 (1329053)

PE: 5/3/2017 to 8/9/2017 to VLK Young Gun C503 (1329053)

## 173 DCSF POST ROCK RECIPE 213Z8

38%GV 40%AN 13%AR Balancer Cow Double Black Double Polled  
4/4/2012 DCSF 213Z8 1228449

TAU MR KRUGERRAND 70M 130P	
BDCG DC STOCKMAN 56W4 ET	
AHL REBA 56S	
DDF MR CHUNKY 515R	
DCSF POST ROCK RECIPE 42U8	
WVR RECIPE 558R	

CED	BW	WW	YW	MK	TM	CEM	YG	CW	REA	MB
5	1.8	66	103	22	55	8	-0.1	34	0.08	0.23

She produced only bulls during her stay at Post Rock all of which made the bull sale and sold at or slightly above the sale average. The kind of cow every ranch needs more of. Problem free consistent producers who always help pay more than their share of the bills.

AI: 4/30/2017 to EGL Game Changer D136 (1372783)

PE: 5/3/2017 to 8/9/2017 to Lazy TV Distinguished C136 (1325820)

## 176 DCSF POST ROCK WINNIE 246Z2 ET

Purebred 94% Gelbvieh Cow Black Homozygous Polled  
10/4/2012 DCSF 246Z2 1320387

DMRS SARGE 635S	
DCSF POST ROCK SILVER 233U1	
DCSF POST ROCK WILMA 261P1 ET	
MRCO NEW DIRECTION 90S	
DCSF POST ROCK WINNIE 11N2	
DCSF POST ROCK WINNIE 49L2	

CED	BW	WW	YW	MK	TM	CEM	YG	CW	REA	MB
7	4.2	86	135	28	71	2	-0.13	56	0.51	-0.27

Purchased her as a frozen embryo from Brett Bozeman and what a nice cow she is. She has an outstanding calf born this fall at side which sells with her. Her 1st son sold for \$4750 and her second son sells as lot 11. This is a really good purebred cow.

Lot 176A Black Polled Heifer calf BD: 10/1/2017 BW: 92 TT: 324E2 Sire: Post Rock Astronaut 157A2 (1263322)

PE: 12/28/2017 to 2/20/2018 to Lazy TV Distinguished C136 (1325820)



## 177 MLG MEADOWLARK ROYALE 404Z

Purebred 94% Gelbvieh Cow Black Homozygous Polled  
2/9/2012 MLG 404Z 1228443

DMRS SARGE 635S	
DCSF POST ROCK SILVER 233U1	\$COW 98.49
DCSF POST ROCK WILMA 261P1 ET	FPI 67.78
KCF BENNETT G196	EPI 187.58
MLG MEADOWLARKS NILA ET	
MLG MEADOWLARK'S ROYALE	

CED	BW	WW	YW	MK	TM	CEM	YG	CW	REA	MB
3	6.8	93	148	22	69	5	-0.14	68	0.5	-0.27

A granddaughter of our first donor jointly owned by Meadowlark & Post Rock. She has always been a favorite for Meadowlark. A son sold at \$6000 in the 2015 sale and she left us a really good daughter. A very attractive cow that can pop a good one.  
AI: 4/30/2017 to Post Rock Power Built 37B8 (1288984)  
PE: 5/3/2017 to 8/9/2017 to Lazy TV Distinguished C136 (1325820)



DCSF POST ROCK SILVER 233U1 • Sire of Lot 177.

## 178 DCSF POST ROCK MKC S30 109Z2

Purebred 94% Gelbvieh Cow Red Double Polled  
2/18/2012 DCSF 109Z2 1228350

RID R COLLATERAL 2R	
BEA PASSION 001X ET	\$COW 64.86
BEA ELLA ET	FPI 56.69
SLC FREEDOM 178F ET	EPI 65.68
SEPT BREATHLESS MAHONEY S30ET	
PRTY HONEY CHIL ET	

CED	BW	WW	YW	MK	TM	CEM	YG	CW	REA	MB
10	1.6	63	89	9	41	3	-0.24	25	0.19	-0.24

This is Meredith's cow from a show heifer she purchased out of September Farms dispersal sale. Her sire Maternal grandsire and Maternal Granddam were all Denver National Champions and she's certainly made right as well. Her 1st son sold for \$4500 in a past sale.  
AI: 4/30/2017 to Post Rock Power Built 37B8 (1288984)  
PE: 5/3/2017 to 8/9/2017 to Post Rock Power Stroke 95B1 (1291039)

## 179 DCSF POST ROCK BLOSSOM 10D8

38%GV 53%AN Balancer Cow Homozygous Black Homozygous Polled  
1/21/2016 DCSF 10D8 1358015

KCF BENNETT QUALITY FOCUSED	
DCSF POST ROCK HIGHLY FOCUSED	\$COW
DCSF POST ROCK SANDY 273W2	FPI 78.83
DDF MR CHUNKY 515R	EPI
DCSF POST ROCK BLOSSOM 68B8	
DCSF POST ROCK BLOSSOM 69P1	

CED	BW	WW	YW	MK	TM	CEM	YG	CW	REA	MB
16	-2.3	55	88	29	56	7	-0.02	22	0.01	0.57

Ultra Calving Ease, Post Rock Highly Focus daughter who comes from a long line of calving ease cows. Lots of carcass genetics in this pedigree  
AI: 4/22/2017 to JKGF Ditka C 85 (1322576)  
PE: 5/3/2017 to 8/9/2017 to Post Rock Power Stroke 95B1 (1291039)



DCSF POST ROCK HIGHLY FOCUSED • Sire of Lots 179, 180.

## 180 DCSF POST ROCK GEORGIA 37D8

38%GV 51%AN Balancer Cow Double Black Double Polled  
1/28/2016 DCSF 37D8 1358055

KCF BENNETT QUALITY FOCUSED	
DCSF POST ROCK HIGHLY FOCUSED	\$COW 75.69
DCSF POST ROCK SANDY 273W2	FPI 88.64
CTR CTR MOMMA MAKER 0056X	EPI 107.27
DCSF POST ROCK GEORGIA 209B8	
DCSF POST ROCK GEORGIA 111Y8	

CED	BW	WW	YW	MK	TM	CEM	YG	CW	REA	MB
15	-1.3	64	100	28	60	9	-0.03	27	-0.03	0.75

Sired by the popular AI sire Post Rock Highly Focused out of a top young cow who ratio's 99 BW 106 WW on her first two calves. Notice the curve bending EPD's she's got to work with in breeding decisions.  
AI: 4/22/2017 to Black Marble Tender 006X (1139874)  
PE: 5/3/2017 to 8/9/2017 to Post Rock Power Stroke 95B1 (1291039)

## 181 BDCL DC DARCI 401D4

75%GV 25%AN Balancer Cow Black Homozygous Polled  
9/30/2016 BDCL 401D4 1385696

JRI POP A TOP 197T83	
JRI NEXT STEP 285X72	\$COW 77.01
JRI MS BUTTERSCOTCH285T62 ET	FPI 68.12
S A V BISMARCK 5682	EPI 75.64
BDG DC DARCI 401A1 ET	
DARC P401	

CED	BW	WW	YW	MK	TM	CEM	YG	CW	REA	MB
12	1	68	103	22	56	2	-0.34	31	0.62	-0.05

Darci 401D4 is a homozygous polled powerhouse fall heifer. Her dam, 401A1, won her division in Denver and has made a super young cow. She may, like her famous dam, DARC P401, end up in the donor pen. This Darci cow family has been dominant across the breed. We have lost P401 and the opportunity to purchase females from this line of cows doesn't come up often. Evaluate this heifer.  
AI: 12/14/2017 to Game Changer D136 (D136 (1372783))  
PE: 12/20/2017 to 2/17/2018 to SDCG 7326D (1386467)

## 182 DCSF POST ROCK EMULINE 205D8

50%GV 40%AN Balancer Cow Homozygous Black Homozygous Polled  
3/3/2016 DCSF 205D8 1358293

MYTTY IN FOCUS	
TOG TWIN OAK FOCUS 277Y	\$COW
TOG TWIN OAK STAR 188W ET	FPI 74.45
DCSF POST ROCK SILVER 273Y1 ET	EPI
DCSF POST ROCK EMULINE 188B8	
DCSF POST ROCK EMULINE 66Y8	

CED	BW	WW	YW	MK	TM	CEM	YG	CW	REA	MB
14	-1.4	68	102	25	59	9	-0.11	29	0.44	0.11

Curve bending EPDs that are minus for birth and above breed average for growth. We really like our 277Y daughters in production.  
AI: 4/22/2017 to Lazy TV Distinguished C136 (1325820)  
PE: 5/1/2017 to 9/15/2017 to Mill Brae Hoover Dam 4106 (AMAN17916596)





TOG TWIN OAK FOCUS 277Y • Sire of Lot 183.

## 184 DCSF POST ROCK BLUBIRD 36D8

38%GV 57%AN Balancer Cow      Homozygous Black      Homozygous Polled  
1/28/2016      DCSF 36D8      1358054

DVA SCOUT 553  
VRT LAZY TV WATCHMAN W021  
VRT LAZY TV MS PETERBLT T309  
DCSF POST ROCK HIGHLY FOCUSED  
DCSF POST ROCK BLUBIRD 6B8  
DCSF POST ROCK BLUBIRD 1828

CED	BW	WW	YW	MK	TM	CEM	YG	CW	REA	MB
16	-1	60	91	28	58	6	-0.09	25	0.07	0.7

AI sired by the popular Watchman bull. This heifer has lots of calving ease and carcass genetics at work. Watchman daughters have worked well for us.

AI: 4/22/2017 to JKGF Ditka C 85 (1322576)

PE: 5/3/2017 to 8/9/2017 to Post Rock Power Stroke 95B1 (1291039)

## 186 DCSF POST ROCK DARCI 2D8

50%GV 50%AN Balancer Cow      Homozygous Black      Homozygous Polled  
1/16/2016      DCSF 2D8      1358016

DVA SCOUT 553  
VRT LAZY TV WATCHMAN W021  
VRT LAZY TV MS PETERBLT T309  
KCF BENNETT QUALITY FOCUSED  
DCSF POST ROCK DARCI 369A8  
DCSF POST ROCK DARCI 274Y1ET

CED	BW	WW	YW	MK	TM	CEM	YG	CW	REA	MB
14	-0.4	77	116	28	67	6	-0.1	40	0.28	0.52

Exceptional EPD profile to build with on this Watchman daughter from one of strongest cow families and top young cows. She ratio's 98 BW 104 WW as an Individual.

AI: 4/22/2017 to JKGF Ditka C 85 (1322576)

PE: 5/1/2017 to 9/15/2017 to Mill Brae Hoover Dam 4106 (AMAN17916596)

## 188 DCSF POST ROCK MISS PRIDE 83D8

38%GV 53%AN Balancer Cow      Double Black      Double Polled  
2/5/2016      DCSF 83D8      1358114

EGL ROUNDUP X777  
EGL ROUNDHOUSE B019  
EGL EVELYNN U426  
TAU MR KRUGERRAND 70M 130P  
DCSF POST ROCK ELLIE 4728  
DCSF POST ROCK ELLIE 12X8

CED	BW	WW	YW	MK	TM	CEM	YG	CW	REA	MB
12	1.5	70	112	26	61	6	-0.12	34	0.14	0.46

AI sired by the popular syndicated sire Roundhouse out of the awesome lot 169 cow. She ratio's 106WW and 111YW as an individual. Real genetic opportunity here.

AI: 4/22/2017 to JKGF Ditka C 85 (1322576)

PE: 5/3/2017 to 8/9/2017 to Post Rock Power Stroke 95B1 (1291039)

## 183 DCSF POST ROCK BRUGESS 206D8

50%GV 50%AN Balancer Cow      Homozygous Black      Double Polled  
3/3/2016      DCSF 206D8      1358294

MYTTY IN FOCUS  
TOG TWIN OAK FOCUS 277Y  
TOG TWIN OAK STAR 188W ET  
CTR CTR MOMMA MAKER 0056X  
DCSF POST ROCK BRUGESS 186B8  
DCSF POST ROCK BRUGESS 257U8

CED	BW	WW	YW	MK	TM	CEM	YG	CW	REA	MB
14	0	73	112	24	61	11	-0.06	36	0.3	0.42

Outstanding EPDs to make breeding decisions with and out of a young cow who's proving her worth with a 97 BW 105 WW 103 YW ratio's on her first 2 progeny. Usually when you buy heifer's its like eating a box of Russel Stover Candy "you never know what your going to get" however much of the guess work has been eliminated on this kind.

AI: 4/22/2017 to Black Marble Tender 006X (1139874)

PE: 5/1/2017 to 9/15/2017 to Mill Brae Hoover Dam 4106 (AMAN17916596)

## 185 DCSF POST ROCK ELBA 53D8

50%GV 50%AN Balancer Cow      Double Black      Double Polled  
2/1/2016      DCSF 53D8      1358068

DVA SCOUT 553  
VRT LAZY TV WATCHMAN W021  
VRT LAZY TV MS PETERBLT T309  
A A R TEN X 7008 S A  
DCSF POST ROCK ELBA 4888  
DCSF POST ROCK ELBA 168Z2

CED	BW	WW	YW	MK	TM	CEM	YG	CW	REA	MB
14	-1	74	115	28	65	7	-0.15	36	0.31	0.59

Look at the spread on these EPD's top 20% or higher for calving ease, growth and top 4% for marbling. Her Dam has a 100 BW ratio 109 WW ratio on her first two calves. Probably went too deep when we shared this one.

AI: 4/22/2017 to Lazy TV Distinguished C136 (1325820)

PE: 5/1/2017 to 9/15/2017 to Mill Brae Hoover Dam 4106 (AMAN17916596)

## 187 DCSF POST ROCK GWEN 7D8

50%GV 50%AN Balancer Cow      Double Black      Homozygous Polled  
1/20/2016      DCSF 7D8      1358044

DVA SCOUT 553  
VRT LAZY TV WATCHMAN W021  
VRT LAZY TV MS PETERBLT T309  
DCSF POST ROCK HIGHLY FOCUSED  
DCSF POST ROCK GWEN 988  
DCSF POST ROCK GWEN 1328

CED	BW	WW	YW	MK	TM	CEM	YG	CW	REA	MB
16	-1.7	65	104	28	60	7	-0.06	31	0.07	0.61

It takes years of disciplined breeding to get these kind of EPD's. Four generations of AI sires stacked for calving ease, growth and carcass.

AI: 4/22/2017 to Black Marble Tender 006X (1139874)

PE: 5/1/2017 to 9/15/2017 to Mill Brae Hoover Dam 4106 (AMAN17916596)

## 189 DCSF POST ROCK MARY 170D2

Purebred 94% Gelbvieh Cow      Black      Double Polled  
2/23/2016      DCSF 170D2      1358496

JCB LAZY TV BEECH JET R052ET  
JKGF FUTURE INVESTMENT X037  
LWHF SANDY 37M  
BEA PASSION 001X ET  
DCSF POST ROCK MARY 117A2  
DCSF POST ROCK MARY 55W2

CED	BW	WW	YW	MK	TM	CEM	YG	CW	REA	MB
10	2.9	76	104	15	53	6	-0.22	35	0.31	-0.02

Top 20% growth and Carcass genetics in this heifer. From a solid cow family.

AI: 4/22/2017 to ICG Pay Raise 4886 (AMAN17974692)

PE: 5/1/2017 to 9/15/2017 to Mill Brae Hoover Dam 4106 (AMAN17916596)



## 190 DCSF POST ROCK PRIMROSE 229D8

38%GV 48%AN Balancer Cow						Double Black		Double Polled			
3/15/2016						DCSF 229D8		1358316			
CTR MOMMA MAKER 4761P											
CTR CTR MOMMA		MAKER 0056X				CTR 8204U		DDF MR CHUNKY 515R		\$COW	51.34
										FPI	77.13
DCSF POST ROCK		PRIMROSE 16Y8				MSH 6L				EPI	107.47
CED	BW	WW	YW	MK	TM	CEM	YG	CW	REA	MB	
8	1.1	66	106	23	56	10	-0.06	38	0.04	0.46	

Momma Maker was a correctly named sire as his daughters are really nice cows. Top 35% YW and 15 % marbling genetics in this heifer.

AI: 4/22/2017 to Black Marble Tender 006X (1139874)

PE: 5/3/2017 to 8/9/2017 to Post Rock Power Stroke 95B1 (1291039)

## 191 DCSF POST ROCK RHONDA 195D2

Purebred 94% Gelbvieh Cow						Double Black		Double Polled								
3/1/2016						DCSF 195D2		1358284								
JRI TOP PRODUCER 282Z3																
DCSF POST ROCK POWER STROKE 95B1 ET						<table><tr><td>\$COW</td><td>83.23</td></tr><tr><td>FPI</td><td>66.63</td></tr><tr><td>EPI</td><td>56.49</td></tr></table>					\$COW	83.23	FPI	66.63	EPI	56.49
\$COW	83.23															
FPI	66.63															
EPI	56.49															
DARC P401																
JKGF FUTURE INVESTMENT X037																
DCSF POST ROCK RHONDA 29A2																
DCSF POST ROCK RHONDA 250N2ET																
CED	BW	WW	YW	MK	TM	CEM	YG	CW	REA	MB						
11	0.7	69	91	28	62	4	-0.39	24	0.57	-0.12						

Her impressive dam ratio's 100 BW 104WW on her first 3 calves. Buying your heifers out of high ratioing cows eliminates some of the risk. Nice PB heifer.

AI: 4/22/2017 to Mill Bar Hickok 7242 (AMAN17351674)

PE: 5/1/2017 to 9/15/2017 to Mill Brae Hoover Dam 4106 (AMAN17916596)

## 192 DCSF POST ROCK GRETA 239D2

Purebred 94% Gelbvieh Cow					Double Black			Double Polled								
3/25/2016					DCSF 239D2			1358323								
JKGF FUTURE INVESTMENT X037																
DCSF POST ROCK		ASTRONAUT 157A				<table><tr><td>\$COW</td><td>78.6</td></tr><tr><td>FPI</td><td>66.09</td></tr><tr><td>EPI</td><td>77.75</td></tr></table>					\$COW	78.6	FPI	66.09	EPI	77.75
		\$COW	78.6													
FPI	66.09															
EPI	77.75															
		DCSF POST ROCK ELBA 50U2														
		BEA PASSION 001X ET														
DCSF POST ROCK		PASSION 229A2														
		DCSF POST ROCK GRETA 160X2														
CED	BW	WW	YW	MK	TM	CEM	YG	CW	REA	MB						
8	2.8	76	109	19	58	6	-0.29	39	0.29	-0.15						

With the popularity of the Balancer breed Purebred heifers are a hard find and quality purebreds are even harder. This Purebred heifer Ratio's 98 BW 101 WW as an individual.

AI: 4/22/2017 to ICC Pay Raise 4886 (AMAN17974692)

PE: 5/1/2017 to 9/15/2017 to Mill Brae Hoover Dam 4106 (AMAN17916596)

## 193 DCSF POST ROCK QUEEN 235D8

63%GV 22%AN Balancer Cow					Double Black			Homozygous Polled			
3/24/2016					DCSF 235D8			1358320			
DCSF POST ROCK SILVER 233U1											
DCSF POSTROCK SILVER 273Y1 ET								\$COW			
DARC P401											
BDCG DC STOCKMAN 56W4 ET									70.72		
DCSF POST ROCK QUEEN 69Z8								EPI			
DCSF POST ROCK QUEEN 84U8											
CED	BW	WW	YW	MK	TM	CEM	YG	CW	REA	MB	
6	3.7	83	132	14	56	2	-0.2	52	0.34	-0.1	

Her Dam Ratio's 91 BW 107 WW on her first four calves which means her calves are 9% below herd average for birth and 7% above herd average at weaning in a strong large contemporary group.

AI: 4/22/2017 to ICC Pay Raise 4886 (AMAN17974692)

PE: 5/1/2017 to 9/15/2017 to Mill Brae Hoover Dam 4106 (AMAN17916596)

## 194 DCSF POST ROCK 117U2 172D8

50%GV 36%AN Balancer Cow						Double Black			Double Polled		
2/23/2016						DCSF 173D8			1358262		
A A R TEN X 7008 S A											
MCFG ASTEROID 039A									\$COW		
MCFG MIDDLE CREEK FORTUNE 2Y											
DCSF POST ROCK MASS APPEAL ET										FPI 77.52	
DCSF POST ROCK 117U8 128A8									EPI		
DCSF POST ROCK BLK BAL 117U8											
CED	BW	WW	YW	MK	TM	CEM	YG	CW	REA	MB	
11	0	71	108	22	58	8	-0.28	38	0.46	0.12	

Awesome EPD's spread on this Asteroid daughter. Her sire blew away the competition at the Mid Land bull test and left some very nice daughters in our herd.

AI: 4/22/2017 to Post Rock Power Built 37B8 (1288984)

PE: 5/1/2017 to 9/15/2017 to Mill Brae Hoover Dam 4106 (AMAN17916596)

## 195 DCSF POST ROCK BLACKCAP 193D8

38%GV 51%AN Balancer Cow					Homozygous Black		Homozygous Polled			
2/29/2016					DCSF 193D8		1358282			
A A R TEN X 7008 S A										
MCFG ASTEROID 039A					MCFG MIDDLE CREEK FORTUNE 2Y		DCSF POST ROCK FD 261S8 ET		\$COW	
DCSF POST ROCK BLACKCAP 458Z8					DCSF POST ROCK BLACKCAP 33S8		FPI	83.82		
							EPI			
CED	BW	WW	YW	MK	TM	CEM	YG	CW	REA	MB
12	0.3	74	111	20	58	8	-0.3	39	0.54	0.31

Another big spread daughter of Asteroid. Take advantage of the opportunity to buy these Asteroid daughters we don't let many get away.

AI: 4/22/2017 to Black Marble Tender 006X (1139874)

PE: 5/1/2017 to 9/15/2017 to Mill Brae Hoover Dam 4106 (AMAN17916596)

## 196 DCSF POST ROCK BLOSSOM 194D8

38%GV 51%AN Balancer Cow					Homozygous Black			Homozygous Polled		
2/29/2016					DCSF 194D8			1358283		
A A R TEN X 7008 S A										
MCFG ASTEROID 039A								\$COW		
MCFG MIDDLE CREEK FORTUNE 2Y								FPI	75.38	
FHG FLYING H FRTL50A 131L ET								EPI		
DCSF POST ROCK BLOSSOM 69P1										
DCSF POST ROCK BLOSSOM 88M1										
CED	BW	WW	YW	MK	TM	CEM	YG	CW	REA	MB
11	0.8	72	105	17	53	6	-0.23	33	0.41	0.1

High individual ratio's on this heifer with 95 BW 105 WW. Outstanding EPD's for unlimited mating opportunities.

AI: 4/22/2017 to Black Marble Tender 006X (1139874)

PE: 5/1/2017 to 9/15/2017 to Mill Brae Hoover Dam 4106 (AMAN17916596)

## 197 DCSF POST ROCK RAVEN 111D8

50%GV 37.5%AN Balancer Cow						Double Black		Double Polled		
2/10/2016						DCSF 111D8		1358209		
A A R TEN X 7008 S A										
MCFG ASTEROID 039A								\$COW		98.09
								FPI		79.93
DCSF POST ROCK RAVEN 180A8								EPI		114.46
MCFG MIDDLE CREEK FORTUNE 2Y										
DCSF POST ROCK STAR POWER ET										
DCSF POST ROCK RAVEN 242W8										
CED	BW	WW	YW	MK	TM	CEM	YG	CW	REA	MB
9	2.9	86	129	18	61	8	-0.35	50	0.6	0.12

She weaned off with a 105 ratio. From a solid cow family and cow.

AI: 4/22/2017 to Mill Bar Hickok 7242 (AMAN17351674)

PE: 5/1/2017 to 9/15/2017 to Mill Brae Hoover Dam 4106 (AMAN17916596)





## E MCFG ASTEROID 039A

38% GV Balancer® Bull      Homozygous Black      Homozygous Polled  
1/8/2013      MCFG 039A      1250349  
SIRE: A A R TEN X 7008 S A      DAM: MCFG MIDDLE CREEK FORTUNE 2Y

CED	BW	WW	YW	MK	TM	CEM	YG	CW	REA	MB	FPI
13	0.9	90	149	32	77	8	-0.48	60	0.86	0.69	102.90

This 10X son came to Post Rock as the high seller in the 2014 Midland Bull Test. His ratios were 106WW, 118ADG, 112 feed efficiency, and 111MBT. He is out of an incredible cow and has outstanding genomic-enhanced EPDs. His first sons sell, and they are truly exciting.

## A DCSF POST ROCK SILVER 273Y1

Purebred Gelbvieh Bull      Homozygous Black      Homozygous Polled  
9/25/2011      DCSF 273Y1      1219935  
SIRE: DCSF POST ROCK SILVER 233U1      DAM: DARC P401

CED	BW	WW	YW	MK	TM	CEM	YG	CW	REA	MB	FPI
5	4.7	97	145	19	68	4	-0.38	62	0.74	-0.14	76.73

Shark was retained for use in our program to maintain the performance of his sire Silver with the added eye appeal of his donor dam Darci. She is the only cow ever in the breed to have produced two Breeders' Choice champions. There are several outstanding sons of Shark selling, including some that have lead herd sire potential at any seed stock operation. You need to sort through this sire group.

## B DMS STUCKYS TRUSTEE

25% GV Balancer® Bull      Black      Polled  
1/9/2012      DMS 025MTZ      1216539  
SIRE: SYDGEN TRUST 6228      DAM: DMS STUCKY TRACY

CED	BW	WW	YW	MK	TM	CEM	YG	CW	REA	MB	FPI
9	0.5	80	135	33	73	6	-0.38	51	0.66	0.91	101.36

DMS Stuckys Trustee 025MTZ was our selection to increase marbling while maintaining traditional Gelbvieh growth and docility. His genomic enhanced EPD's show his marbling ranks him in the top one percent for Gelbvieh, Balancer, Simmental, SimAngus, and Red Angus. He ranks in the top 1 percent for Feeder Profit Index as well. Trustee's also has maternal value his dams family has been well tested as a part of our herd since 1988, maternal grand sire SITZ Alliance 6595 and great grand sire Post Rock Black Savvy are both well known for their great daughters. We have his first sons here for your evaluation. We hope they serve you as well as their ancestry has served us.

## C DCSF POST ROCK ASTRONAUT 157A

Purebred Gelbvieh Bull      Homozygous Black      Homozygous Polled  
3/1/2013      DCSF 157A2      1263322  
SIRE: JKG FUTURE INVESTMENT X037      DAM: DCSF POST ROCK ELBA 50U2

CED	BW	WW	YW	MK	TM	CEM	YG	CW	REA	MB	FPI
8	3.2	62	78	31	62	9	-0.42	20	0.38	0.08	64.10

One of the most exciting young bulls in recent breed history, 29 semen shareholders made him one of the all-time high sellers in Gelbvieh history at the 2014 Post Rock Sale. His first calves hit the ground last spring with outstanding reviews. Several sons sell, and many cows will either have a calf at side or carry his valuable service. He was AI'd to more cows this spring than any bull we've ever used.

## D DCSF POST ROCK POWER STROKE 95B1

PB 88% Gelbvieh Bull      Black      Homozygous Polled  
2/14/2014      DCSF 95B1      1291039  
SIRE: JRI TOP PRODUCER 282Z3      DAM: DARC P401

CED	BW	WW	YW	MK	TM	CEM	YG	CW	REA	MB	FPI
15	-2.2	68	84	27	61	0	-0.45	15	0.43	-0.21	68.49

Several of the sale cows selling carry progeny by Powerstroke. His EPDs indicate top 1% calving ease and 4% low birth with useful growth EPDs. He's a full brother to the purebred 2015 Breeders' Choice Futurity winner, Businessman. He has a lot of quality and eye appeal, and we use him on purebred heifers as well as 3/8 and 1/4 balancer heifers to increase the resulting progeny back up to our 50-50 goal for balancer calves.

## F TTTT MIGHTY HOTT 1450B

50% GV Balancer® Bull      Homozygous Black      Homozygous Polled  
10/15/2014      TTTT 1450B      1317197  
SIRE: MYTTY IN FOCUS      DAM: AHL HOTTDAMN 105R ET

CED	BW	WW	YW	MK	TM	CEM	YG	CW	REA	MB	FPI
18	-1.6	59	91	25	54	7	-0.37	21	0.24	0.41	79.52

Another new and exciting sire group is the TTTT Mighty Hott ET. Mighty Hot was selected as the Balancer Breeder Choice Futurity winner in 2016. Walking rights and a semen interest was purchased out of the National Sale by STUCKY BEEF GENETICS. His initial calf crop data of 1.0 CE 97 BW 100 WW 101 YW 100 REA 100 IMF on nearly 100 progeny from 21 herds is outstanding. His sons performed very well on gain test and ultra sounded very well this year against strong contemporary groups at Post Rock. This will be an important and long term large sire group that you'll enjoy sorting thru whether you are looking for an elite sire to lead your seed stock program or a large group of bulls to build your cow herd and top the market with his steer calves.



## G TOG TWIN OAK FOCUS 277Y

50% GV Balancer® Bull	Homozygous Black	Homozygous Polled
8/4/2011	TOG 277Y	1206062
SIRE: MYTTY IN FOCUS	DAM: TOG TWIN OAK STAR 188W ET	

CED	BW	WW	YW	MK	TM	CEM	YG	CW	REA	MB	FPI
18	-3.1	74	109	30	67	14	-0.13	30	0.48	0.27	85.77

277Y is a homo-black, homo-polled, ultra calving ease balancer sire that produces real performance and muscle as his EPDs indicate. He had the second largest ribeye in his group and above average marbling on ultrasound. His pedigree is proven with truly elite genetics of the Angus and Gelbvieh breeds. Safe to use even on the smallest of heifers.



## H VLK C503 YOUNG GUN

63% GV Balancer® Bull	Homozygous Black	Homozygous Polled
3/19/2015	VLK C503	1329053
SIRE: BGGR BGGR GRAVITY 803A	DAM: BVLK BVLK X04 MONA LISA	

CED	BW	WW	YW	MK	TM	CEM	YG	CW	REA	MB	FPI
11	1.5	83	125	18	60	7	-0.30	46	0.48	0.22	82.38

The Young Gun's will be a new and exciting sire group this year. Young Gun was the 2017 Reserve National Champion Balancer bull in Denver last year and he's proving to an equally impressive breeding bull as well. His first calf crop data of 99 BW 102 WW indicates he's a low birth, high growth bull and our eyes tell us they have his eye appeal, rib shape, muscle and structural correctness to go with his impressive data. Look over his sire group they are an extremely strong and uniform group and have some elite herd sire prospects selling as well.



## I DCSF POST ROCK POWER BUILT 37B8

75% GV Balancer® Bull	Red	Homozygous Polled
1/26/2014	DCSF 37B8	1288984
SIRE: JRI TOP PRODUCER 282Z3	DAM: DCSF POST ROCK WILMAN 298Z8 ET	

CED	BW	WW	YW	MK	TM	CEM	YG	CW	REA	MB	FPI
8	0.8	73	112	27	64	-1	-0.34	37	0.62	0.09	74.31

Post Rock Power Built first caught the attention of many as the crowd favorite in Denver and was the High selling bull in our 2015 sale to our friends at Circle S Ranch. His progeny are an easy find whether in the show ring, the pasture or the bull pen, they simply stand out with the added rib and muscle combined with eye appeal. This will be the first of his sire group at Post Rock and we are sure you will be impressed. Nearly 90% of the purebred and high percentage cows we AI'd in 2017 were to Power Built based on his early progeny. Simply stated they are good!



## J BASIN PAYWEIGHT 1682

Purebred Angus Bull	Homozygous Black	Homozygous Polled
2/11/2011	1682	17038724
SIRE: BASIN PAYWEIGHT 006S	DAM: 21AR O LASS 7017	

CED	BW	WW	YW	Milk	CW	Marb	RE	\$W	\$F	\$G	\$B
+8	+0.3	+70	+122	+31	+63	+0.96	+0.54	+78.43	+98.44	+32.30	+169.30

Payweight has certainly been the talk and high demand bull for the Angus breed. Semen, if you can get it, now sells for over \$200 per unit and we are fortunate to have a number of exceptional Payweight sons selling. Simply stated he's produced the best Angus sired Balancer sale group we've ever had. Look for many Payweight sons to come in the next 2 years.

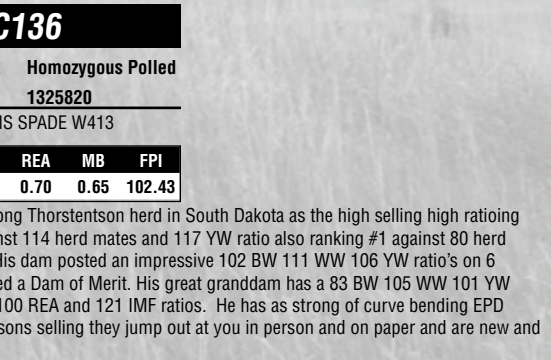


## K VRT LAZY TV DISTINGUISHED C136

50% GV Balancer® Bull	Homozygous Black	Homozygous Polled
2/12/2015	VRT C136	1325820
SIRE: V A R DISCOVERY 2240	DAM: VRT LAZY TV MS SPADE W413	

CED	BW	WW	YW	MK	TM	CEM	YG	CW	REA	MB	FPI
13	-1.7	86	142	33	76	9	-0.44	52	0.70	0.65	102.43

In a Data driven world C136 has few equals. We purchased this Angus sired Discovery son out of the performance strong Thorstentson herd in South Dakota as the high selling high ratioing bull in the 2016 sale. C136 Posted a 97 BW ratio against 132 contemporaries a 123 WW ratio and was ranked #1 against 114 herd mates and 117 YW ratio also ranking #1 against 80 herd mates all in a low 6 frame size. On ultra sound he posted a 104 REA ratio and a 113 IMF ratio against 75 herd mates. His dam posted an impressive 102 BW 111 WW 106 YW ratio's on 6 calves and is a Dam of Merit. His granddam has a 98 BW 104 WW 98 YW ratio's on 7 calves and has also been awarded a Dam of Merit. His great granddam has a 83 BW 105 WW 101 YW ratio's on 9 calves and is an AGA Dam of Distinction. In his initial calf crop C136 has a 94 BW ratio 101 WW 102 YW 100 REA and 121 IMF ratios. He has as strong of curve bending EPD profile as you can write and has as large contemporary group data base generations deep to back it up. Look over his sons selling they jump out at you in person and on paper and are new and exciting sire group.







Mitchell Marketing Service  
20180 NE Roy Golden Road  
Blountstown, FL 32424

**FIRST CLASS**

 **POST ROCK  
CATTLE**

**Post Rock Cattle Company GPS Address:  
3041 East Vine Street, Barnard, KS**