

Breeder's Choice

Gelbvieh Bull Futurity

20th
Annual

SATURDAY, JANUARY 7, 2017

Held in conjunction with
National Western Stock Show • Denver, Colorado

Breeder's Choice

Gelbvieh Bull Futurity

GENERAL INFORMATION

The Breeder's Choice Bull Futurity has been initiated by Gelbvieh breeders and supporters to increase participation in the National Gelbvieh Show, the National Gelbvieh Sale and to identify the most useful young sires in the Gelbvieh breed. The sponsor of the annual Futurity will be the Breeder's Choice Bull Futurity, Inc., a non-profit organization, not associated with the American Gelbvieh Association. The Futurity winners will be selected by scored balloting of the participating breeders members. Ballots must have a different bull in 1st, 2nd, and 3rd positions. Ballots must include all three positions.

The consignor of the Futurity winner shall receive approximately 80% of the net Futurity funds. Two runners-up will be identified to receive approximately 10% respectively.

The Futurity winner will be sold in the National Gelbvieh Sale. The net sale proceeds of the winning bull will be given to one breeder/member who will be selected by a random drawing.

Each Futurity breeder member will receive 20 (twenty) units of semen from the winning bull.

The voting will be held at the National Western Stadium Arena on Saturday, January 7, 2017 at 10:00 am. The top 3 vote winning bulls in the initial voting will come back to the arena for a second voting to select and announce The Breeder's Choice Gelbvieh Bull Futurity Champion.

Breeder's Choice Gelbvieh Bull Futurity drawing will held at the Double Tree Hotel Saturday night, January 7, 2017, at the Breeder's Choice and People's Choice futurity social.

The 2017 Futurity is limited to 53 breeder memberships. Two breeder memberships will be sold at public auction before the drawing for the sale proceeds in the Double Tree Hotel. We will be selling the 8 of Clubs and 9 of Hearts.

All bulls entered in the 2017 Breeder's Choice Gelbvieh Bull Futurity have been DNA tested for high density Genomic EPDs and are tested for the following genetic defects: AM; NH; CA; and DD. The winning Breeder's Choice Futurity bull is AI qualified and all test have been completed to meet the AGA requirements for AI sires.

Futurity Champion Bull **sells in the National Gelbvieh and Balancer® Sale**

**Sunday, January 8, 2017 at 6:00 PM (MST)
NWSS Arena, On The Hill, Denver, CO**

SCHEDULE OF EVENTS

Saturday, January 7, 2017

10:00 AM Breeder's Choice Bull Futurity
Stadium Arena
7:00 PM Breeder's Choice Bull Futurity Meeting
Doubletree Hotel
7:30 PM Breeder's Choice and People's Choice
Futurities Social
Doubletree Hotel
8:00 PM Breeder's Choice and People's Choice
Futurities Final Events, Doubletree Hotel
Selling 2 (two) Breeder's Choice Bull Futurity
Membership

Sunday, January 8, 2017

6:00 PM

Breeder's Choice Bull Futurity Champion sells
in 2017 National Gelbvieh and Balancer® Sale
NWSS Arena, On The Hill



**To purchase Futurity Champion possession or semen syndicate shares
contact Futurity Manager.**

**Two Breeder's Choice Gelbvieh Bull Futurity Memberships will be sold:
8 of Clubs and 9 of Hearts**

Breeder's Choice Gelbvieh Bull Futurity \$1,000 Scholarship

*The 2017 Scholarship recipient will be announced at the Breeder's Choice Bull Futurity
Final Events Saturday, January 7, 2017.*

MMS

www.mms.bz

FUTURITY MANAGER Mitchell Marketing Service

Chris Mitchell 334-695-1371
Randy Sienknecht 319-290-3763
2262 C Avenue • Gladbrook, IA 50635



RTRT GREAT DIVIDE 503C
2016 Breeder's Choice Gelbvieh Bull Futurity Champion

Futurity Members

BARWICK GELBVIEW
Orleans, NE

BEASTROM, JIM
Pierre, SD

BOEHLER GELBVIEW
Orleans, NE

BRANDYWINE FARMS
Rushford, MN

BURBANK CATTLE CO.
St Catharine, MO

C-CROSS CATTLE CO.
Asheboro, NC

CEDAR TOP RANCH
Stapleton, NE

CHIMNEY BUTTE RANCH
Mandan, ND

CIRCLE S RANCH
Canton, KS

CRANVIEW GELBVIEW
Minot, ND

CRIPPLED W CATTLE CO
Clayton, KS

DAVIDSON GELBVIEW
Ponteix, Saskatchewan, Canada

DDM GELBVIEW
Winslow, IL

DROMGOOLE'S HEAVEN
Richmond, TX

ERTEL CATTLE
Greentop, MO

FLYING H GENETICS
Arapahoe, NE

GELBVIEW BAR NONE RANCH
Palm Coast, FL

GENETICS WEST & BAR T BAR
Berthoud, CO

GOLDEN BUCKLE GELBVIEW
Medina, ND

GREEN HILLS GELBVIEW
Mt Ulla, NC

HANDEL FARMS
Menno, SD

**HIGHTOWER CATTLE CO/
HILLTOP FARM**
LaCynge, KS

HOJER GELBVIEW
Lake Preston, SD

HUSKER GROUP
Danbury, NE

JUDD RANCH, INC.
Pomona, KS

JUMPING COW GELBVIEW
Ramah, CO

KANSAS CONNECTION
Sharon Springs, KS

KARLEBO GELBVIEW FARM
Cleveland, NC

LEONHARDT CATTLE CO
Lake Preston, SD

LITTLE WINDY HILL FARMS
Max Meadows, VA

LOCUST HILL FARMS
Ruffin, NC

LONGLEAF STATION
Jackson Springs, NC

LOST RIVER LIVESTOCK
Clearbrook, MN

M AND P GELBVIEW
Odell, NE

MINNESOTA GROUP
C/O JASON SAUERS
Winona, MN

MURPHY FARMS
Arlington, SD

PLATEAU GELBVIEW
Peetz, CO

**POKER CITY RANCH &
TRIPLE K GELBVIEW**
Agenda, KS

POST ROCK CATTLE CO
Barnard, KS

PRAIRIE HILLS GELBVIEW
Gladstone, ND

RICKY LINQUIST/JIM HORTON
Fonda, IA

**RIDINGER CATTLE CO/JP
TRIPLE K GELBVIEW**
Deer Trail, CO

**ROYAL WESTERN GELBVIEW &
ROCKY TOP GELBVIEW**
Innisfail, Alberta, Canada

STUECKEN BROS.
Freeburg, MO

TAUBENHEIM GELBVIEW
Amherst, NE

THORSTENSON GELBVIEW
Selby, SD

TNT FARMS/J&K FARMS
Ava, IL

TJB GELBVIEW
Chickamauga, GA

TRIPLE D
C/O MILTON DIGGS
Sedley, VA

**WANDERING MEADOWS &
DTK GELBVIEW**
Janesville, IA

WARNER BEEF GENETICS
Beaver City, NE

Genomic EPDs and DNA Information

GENOMIC EPD STATEMENT FROM AMERICAN GELBVIEH ASSOCIATION

The American Gelbvieh Association strives to provide the most up to date and accurate EPDs possible. Current, un-adjusted EPDs are provided in the catalog for pre-show research and inquiries. Genomic enhanced EPDs will be published in a supplement sheet on the day of the futurity in order to include the most recent national cattle evaluation numbers and updates to Genomic enhancement parameters.

GENOMIC EPDS AND DNA INFORMATION

The EPDs printed in this book are EPDs without Genomic values factored in to the EPD. New Genomic EPD values will be updated by the AGA and available prior to the Breeder's Choice Gelbvieh Bull Futurity for the voting.

Any updates due to DNA or performance data along with current weights and scrotal measurements will be on a supplement.

Bull Futurities Social and Final Events

Please join us Saturday night at the Doubletree Hotel for the Breeder's Choice and People's Choice Final Bull Futurities Social and Events. Selling two memberships for the Breeder's Choice Gelbvieh Bull Futurity. See times in Schedule of Events on page 1.

Entry 1

Where to start..... honestly there's so much that could be said for a bull that offers this quality of build and versatility that there isn't room on the page to fit it all. So unlike the politicians I'll keep it simple; this ones flat good. To date we feel he is the best purebred produced at Green Hills! It's not often one comes along that's HOMO BLK/ HOMO PLD, good looking, and built flawless from the ground up, while still hitting the mark on paper. Add that with the cow power and genetic backing he has combining the impeccable Carefree cow family and the homo blk/ homo polled calving ease sire Blue's Impact and it's all aboard the Trump Train ladies and gentlemen. It's a bull like him that can MAKE GELBVIEH GREAT AGAIN!



| CED | BW | WW | YW | MK | TM | CEM | YG | CW | REA | MB | FPI |
|-----|-----|----|-----|----|----|-----|-------|----|------|------|-------|
| 11 | 0.9 | 69 | 104 | 30 | 65 | 5 | -0.56 | 30 | 0.62 | 0.03 | 69.35 |

HYEK BLACK IMPACT 3960N
FMGF BLUE'S IMPACT 001X

FMGF ONCE IN A BLUE MOON ET
 ELK CK CRAZY HORSE 138P

GHGF 221 ET

BCFG BUTLERS CAREFREE 534U ET

HYEK BLACK IMPULSE 1296L
 HYEK BLACK RUBY 9604J
 GKG HARLEY
 TJB VELVET MOON 226M - ET
 GRU ELK DEE JAKE 744J
 ELK CK KERRY 138L
 LEMMON NEWSLINE C804
 BCFG BUTLERS CARE FREE 533N

GHGF TRUMP TRAIN C521

88% Purebred Gelbvieh Bull 1327122

Homozygous Black

9/15/2015

BW: 78

WW: 605

Homozygous Polled

GHGF C521

YW: 1261

GREEN HILLS GELBVIEH • MOUNT ULLA, NC

Entry 2



BDCL DC Last Step 44D2 is an attractive-patterned, structurally sound, Homozygous polled PB bull backed by a super Dam of Merit female! He is a thick-ended, wide-based powerhouse who ranks high in the breed for Marbling while still ranking in the top 20% of the breed for Calving Ease. His dam, Hershey, has been working at Dawson Creek for 13 years and her maternal strength shines through as she ratios 102 WW on her calves. If you follow cow-families like we follow cow-families, you understand the importance of maternal power.

| CED | BW | WW | YW | MK | TM | CEM | YG | CW | REA | MB | FPI |
|------|------|----|----|----|----|-----|-------|----|------|-------|-------|
| 11.9 | -0.3 | 63 | 94 | 19 | 51 | 1.8 | -0.41 | 25 | 0.45 | -0.26 | 63.12 |

BDCL DC LAST STEP 44D2

88% Purebred Gelbvieh Bull 1354965

Red

1/10/2016

BW: 86

Homozygous Polled

BDCL 44D2

YW: 1334

WW: 684

JRI POP A TOP 197T83
JRI NEXT STEP 285X72

JRI MS BUTTERSCOTCH285T62 ET
ELK CK BRONCO 411G
BDCG DC HERSHEY 44P

BDCG 44M

JRI TOP SECRET 253M75 ET
JRI MS RED DAWN 197R72
PMG PEGASUS 01P
JRI MS PLD PREFERENCE 285A5
CSG ELK BLACK PLD KENO 26E
ELK 411D
SLC FREEDOM 178F ET
BDCG DC SHASA

DAWSON CREEK GELBVIEH • EASTON, KS

Entry 3

It is with great pleasure that we present you with TAU Full Force 8D a Homozygous Black 88% purebred. Full Force is the result of a powerful mating that was long overdue. He is sired by the popular HYEK Black Impact and backed by one of the most prolific cows in the Gelbvieh breed TAU Miss Gunnison 106R 8101U. 8D's dam has sent numerous daughters to the backdrop at Jr. Nationals, and the National Western Stock Show, and Full Force is no different then his siblings. As you can see in his picture he is extremely powerful and massive, and he couples this with an easy fleshing and soggy look. Its tough to find a herd bull with that much dimension, that still possesses an attractive look from the side and Full Force does just that. 8D puts a lot of phenotypic pieces together and he couples that with a pedigree second to none and a balanced set of EPD's that feature a Marbling EPD in the top 1% of the breed. Look up TAU Full Force 8D in Denver, we are confident that you will not be disappointed.



| CED | BW | WW | YW | MK | TM | CEM | YG | CW | REA | MB | FPI |
|------|-----|----|----|----|----|-----|------|----|------|-------|-------|
| 11.5 | 0.4 | 66 | 93 | 23 | 56 | 3.5 | -0.5 | 25 | 0.54 | -0.02 | 74.92 |

HYEK BLACK IMPULSE 1296L
HYEK BLACK IMPACT 3960N

HYEK BLACK RUBY 9604J
TAU GUNNISON 106R
TAU MISS GUNNISON 106R 8101U

TAU MS FREEDOM 425P

ELK CK SCORPION 2343H ET
OAKK VALLEY LADY 296J
FHG FLYING H EXTRA 150D
HYEK DOTTIE F6048
GMCC RUPPLE GUNNISON N31
TAU MISS RODEO DRIVE 220M
SLC FREEDOM 178F ET
TAU MS KRUGERRAND 940

TAU FULL FORCE 8D ET

88% Purebred Gelbvieh Bull 1357897

Homozygous Black

1/16/2016

BW: 80

Double Polled

TAU 8D

YW:

WW: 695

TAUBENHEIM GELBVIEH • AMHERST, NE

Entry 4



This homozygous black, homozygous polled purebred (94%) Secret Instinct son is flat loaded with cow power genetics. JRI Secret Link 214D98's super dam, JRI Ms Black Secret 214U88, has been honored twice as a Dam of Merit female and she's a current 2016 Dam of Distinction honoree. Super mom 214U88's first baby was JRI Marshall 214X2 who featured a 79# birth weight with a 1,273# yearling weight and Marshall is currently the #1 selling Balancer AI sire in the breed. Dam of Distinction mama 214U88 has three daughters in production with daughters' 214Y98 and 214Z98 both having been granted Dam of Merit honors and daughter 214A38 definitely is headed towards Dam of Merit honors, as her first calf sold in last spring's bull sale with a 779# 205 day weight coupled with a 1,326# yearling weight. JRI Secret Link 214D98 offers you proven cow power genetics and note Secret Link's top 1% calving ease coupled with top 15% marbling EPD strength.

| CED | BW | WW | YW | MK | TM | CEM | YG | CW | REA | MB | FPI |
|-----|------|----|----|----|----|-----|-------|----|------|-------|-------|
| 13 | -0.9 | 51 | 83 | 20 | 46 | -1 | -0.09 | 18 | 0.15 | -0.18 | 56.04 |

JRI SECRET LINK 214D98

94% Purebred Gelbvieh Bull 1351066

Homozygous Black

1/18/2016

BW: 71

WW: 744

Homozygous Polled

JRI 214D98

YW:

JRI TOP SECRET 253M75 ET
JRI SECRET INSTINCT 254U83

JRI MS EXTRA SUGAR 254N72 ET
JRI TOP SECRET 253M75 ET
JRI MS BLACK SECRET 214U88

JRI MS LUCKY STARS 214R78 ET

JRI PLD FREE AGENT 125J3
JRI MS PLD FRONTIER 253J60
FHG FLYING H EXTRA 150D
JRI MS PLD GRANDIMPACT254J62
JRI PLD FREE AGENT 125J3
JRI MS PLD FRONTIER 253J60
JRI BLACK N STACKED 270M78
JRI MS PLD GRAND GLORY 214G6

JUDD RANCH INC • POMONA, KS

Entry 5

His sire DVE Davidson Cowboy 20U, continues to breed the good ones, proving their worth in the show arena, but more importantly in his sale and pasture capacities. His dam is a first calf heifer out of STON Secret Weapon 6S, a bull we bought. He has very successfully sired many acclaimed herd bulls and excellent replacement females, with the udder structure and development that make them ideal. You'll appreciate this bull for his mild mannerism, his bold bone structure, his well laid in shoulder, his length and mass. At 10 months of age he weighed 1030 lbs. and expresses an ideal phenotype from his refined yet masculine head to his very correct legs and feet. His scrotal development is above average. Bred with the intent to make a difference, he has all the outstanding herd bull capacities from calving ease, to look at me now, that sires the good ones year after year!



| CED | BW | WW | YW | MK | TM | CEM | YG | CW | REA | MB | FPI |
|-----|-----|----|----|----|----|-----|-------|----|-----|-------|-------|
| 7.6 | 1.5 | 75 | 90 | 37 | 73 | 4 | -0.15 | 25 | 0.3 | -0.19 | 64.03 |

DVE DAVIDSON PLD MARK 194P
DVE DAVIDSON COWBOY 20U

DVE DAVIDSON MS JULIO 175P
STON SECRET WEAPON 6S

DVE DAVIDSON MS SEC 104B

DVE DAVIDSON MS 77Y

DVE DAVIDSON BACARDI 33M
DVE DAVIDSON PLD TAMMI 82L
LCS DAVIDSON PLD JULIO 432J
DVE DAVIDSON MS BLACK 15E
BTI EXTRA 2106K ET
STON PLD BLACK JASSY 57P
DVE DAVIDSON LEADTIME 89T
DVE DAVIDSON MS JULIO 88N

DVE DAVIDSON RICHIE 5D

94% Purebred Gelbvieh Bull CDGV158191

Red

Homozygous Polled

1/22/2016

DVE 5D

BW: 76

WW: 799

YW:

DAVIDSON GELBVIEH • PONTEIX, SK, CANADA

Entry 6



We are extremely excited to bring Flying H Mr. 128D for your inspection in this year's bull futurity. We carefully planned this ET mating with the hopes of putting all the right pieces together. Mr. 128D is super clean made with tons of rib shape, natural muscle and incredibly sound on his feet and legs. He excels with breed leading calving ease, birth weight and carcass merit. A direct son of our top selling bull and crowd favorite in 2015's Roughage 'N Ready bull sale. Mr. 128D brings together Bruce Almighty's feed efficiency and carcass merit with Traction's maternal strengths to excel in all aspects of the cattle industry.

| CED | BW | WW | YW | MK | TM | CEM | YG | CW | REA | MB | FPI |
|-----|------|----|----|----|----|-----|-------|----|------|------|-------|
| 12 | -1.6 | 61 | 95 | 35 | 66 | 10 | -0.14 | 24 | 0.55 | 0.34 | 77.19 |

FHG FLYING H MR 139Y/45B 128D ET

94% Purebred Gelbvieh Bull 1347406

Double Black

1/24/2016

BW:

WW: 588

Homozygous Polled

FHG 128D

YW:

RWG TRACTION 7412
FHG FLYING H MR TRACTION 45B

FHG FLYING H BLACK JACK 60W
MHD 153W
FHG FLYING H MS MHD 139Y

FHG FLYING H BJ 21T

RWG ROYAL RESERVE 5066
RWG NINE LIFE KITTY 21N
MSH FLYING H BLACK JACK 12L
FHG FLYING H KABOOM 29T
MCFG MCF BRUCE ALMIGHTY 35PET
MHD DANCING MOON
MSH FLYING H BLACK JACK 12L
FHG FLYING H MS EC 151R

FLYING H GENETICS • ARAPAHOE, NE

Entry 1

Post Rock Voyager 40D1 ET is a homozygous black homozygous polled 88% bull with exceptional eye appeal, EPD's and cow family backing him up. His dam was the 2013 NWSS Reserve Champion for Meredith in the Jr. show. Her 1st natural calf was named Supreme Champion Bred and Owned Gelbvieh female at the Jr. National this past summer. In addition she was the Grand Champion Purebred female at the AGJA Western Regional and the always tough Kansas/Nebraska Jr. show in her only 3 shows out this summer. Voyagers granddam is noted donor Post Rock Wilma 261P1 the dam of Post Rock Silver and his great granddam is Post Rock Wilma 147H2 who's the foundation of the Wilma cow family at Post Rock and was a flush sister to the highly respected ABS sire Post Rock Top Brass. Voyagers EPD's show strong right side strength for the traits of growth, carcass, RFI and is backed by strong individual data.



| CED | BW | WW | YW | MK | TM | CEM | YG | CW | REA | MB | FPI |
|-----|-----|----|-----|----|----|-----|-------|----|-----|-------|-------|
| 7 | 2.5 | 76 | 106 | 26 | 62 | 8 | -0.47 | 37 | 0.5 | -0.09 | 66.61 |

JKGF FUTURE INVESTMENT X037
DCSF POST ROCK ASTRONAUT 157A

DCSF POST ROCK ELBA 50U2
CTR GOOD NIGHT 880U

DCSF POST ROCK WILMA 294Z8 ET

DCSF POST ROCK WILMA 261P1 ET

JCB LAZY TV BEECH JET R052ET
LWHF SANDY 37M
MCFG MIDDLE CREEK STAR 10S ET
DCSF POST ROCK ELBA 19R1
CTR GOOD NIGHT 4743P
CTR SWEET ELE 4150P
BTI GRANITE 2135M
DCSF POST ROCK WILMA 147H ET

DCSF POST ROCK VOYAGER 40D1 ET

88% Purebred Gelbvieh Bull 1358057

Homozygous Black

1/29/2016

BW: 80

WW: 809

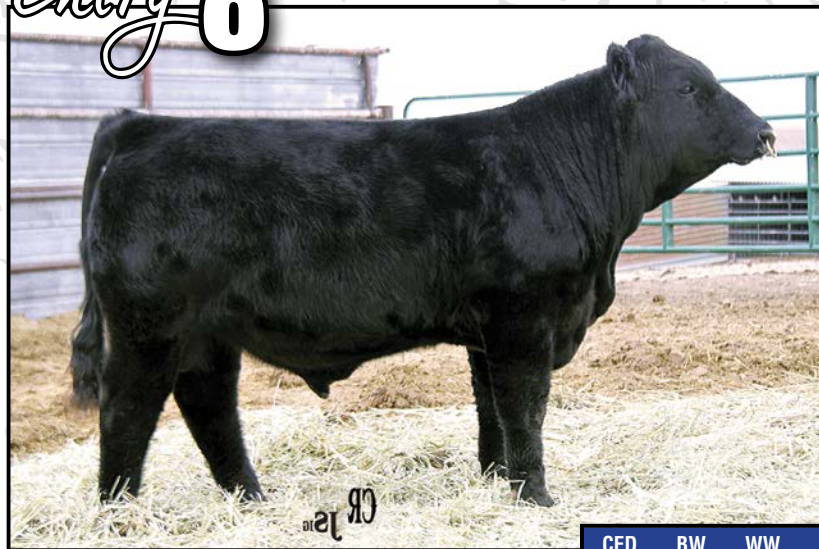
Homozygous Polled

DCSF 40D1

YW:

POST ROCK CATTLE CO • BARNARD, KS

Entry 8



Here's one of the first sons of our much talked about 2016 National Champion Gelbvieh Bull, RID R Lawman 1467B. Lawman calves started hitting the ground right after the NWSS last year and have impressed us from the beginning. Cowboy Cocktail 6019D combines the phenotype, depth of body, and carcass quality of his sire with the calving ease and low birth weight of his Lazy TV Sam sired dam. He is DNA tested homo polled and homo black. Looking back into Cowboy Cocktail's pedigree you'll find some of the breed's best: Carolina Exclusive 1230Y – a trait leader for growth and carcass, RID R Collateral 2R on the top and bottom, VER Lee Ann 508P, Lazy TV Sam U451, Good Fortune, and our Raven cow family – who's influence can be found in many of our herd sires and donor dams. Cowboy Cocktail 6019D has been bred for carcass with trait leaders found throughout his pedigree. His sire scanned a 12.56 REA, 0.12 fat thickness, and an impressive 4.503 IMF. Collateral ranks in the 3% of the breed for MB. Exclusive progeny has averaged an adjusted IMF of 3.388 on 113 progeny ultrascan records in ten herds. Cowboy Cocktail 6019D posted a 205-day adjusted weight of 766 lbs., for a ratio of 105 and a WDA of 3.35 from a first calf heifer. Cowboy Cocktail 6019D is a potent mix to advance the Gelbvieh breed.

| CED | BW | WW | YW | MK | TM | CEM | YG | CW | REA | MB | FPI |
|------|-----|----|-----|----|----|-----|-------|----|------|-------|-------|
| 11.5 | 1.4 | 72 | 105 | 30 | 66 | 4.6 | -0.52 | 34 | 0.65 | -0.02 | 83.67 |

RID R COWBOY COCKTAIL 6019D

94% Purebred Gelbvieh Bull 1363673

Homozygous Black

1/30/2016

BW: 80

WW: 766

Homozygous Polled

RID 6019D

YW:

CCRO CAROLINA EXCLUSIVE 1230Y
AAD R LAWMAN 1467B

JCGR BAR GT LEE ANN 508U ET
VRT LAZY TV SAM U451
RID R RAVEN 1425B

RID R RAVEN 1213Z

DCSF POST ROCK SILVER 233U1
CCRO MS C-CROSS EC / 7309T
RID R COLLATERAL 2R
VER LEE ANN 508P
KHR SAM SPADE 02S
VRT LAZY TV MS FULLBACK L643
CCRO CCROSS GOOD FORTUNE 8206
RID R MS RAVEN 1007X

RIDINGER CATTLE COMPANY • DEER TRAIL, CO

Entry 9

A Red Purebred bull out of Astro and the famous 252 Prissy cow. A bull that's good on the move, eye appealing and comes in well balanced package. If you study the genetic mating of this excellent young herd sire you will find a proven long track record that takes the guess work out! We would appreciate your time and evaluation of this outstanding red bull!



| CED | BW | WW | YW | MK | TM | CEM | YG | CW | REA | MB | FPI |
|-----|-----|----|----|----|----|-----|-------|----|------|-------|------|
| 7.9 | 1.8 | 67 | 96 | 31 | 65 | 6.2 | -0.35 | 29 | 0.27 | -0.15 | 70.3 |

JDPD ASTRO 407S

JDPD ROLEX 151M

HAD PRINCESS OF ALOT 407P
JRI PLD GRAND PRIX ET

VER MISS PLD PRISSY TWO 252G

VER 165B

HAD SLEEP TIGHT ET
VTG VISTA MS FREEDOM 0151K
HAD LANCELOT 795L
HAD 140 L
ATM TEJAS ROLLS ROYCH 868
JRI MS PLD PREFERENCE 285A5
KCF BENNETT HORIZON
VER 165Z

PLA ACES WILD ET

94% Purebred Gelbvieh Bull 1363586

Red

Double Polled

2/2/2016

PLA 1D

BW: 90

WW: 804

YW:

PLATEAU GELBIEH • PEETZ, CO

Entry 10



DLW TPG Dedication 7120D is the result of Warner Beef's commitment of the enhancement of the purebred bull population. This PB 94% bull offers the combination of performance and phenotype with history and confidence to the highest degree. Sired by the Highlight 066K bull that needs no introduction in the ability to sire cattle with added carcass but more importantly all the convenience traits that add to feeder calf value and industry acceptance. Maternally, Dedication 7120D marries two top revenue producing females in the Warner Beef program, 408P- dam of DLW Wardon, and 203N- dam of DLW Windsor. It is important to stack cows in the pedigree to insure consistency and this bull maintains several "great ones". Use bulls that look like you want your cows to be, if you want them moderate, big bodied and powerful then Dedication 7120D rises to the top.

| CED | BW | WW | YW | MK | TM | CEM | YG | CW | REA | MB | FPI |
|-----|----|----|-----|----|----|-----|-------|----|------|------|------|
| 6 | 2 | 74 | 100 | 29 | 65 | 9 | -0.56 | 31 | 0.42 | 0.11 | 82.2 |

DLW TPG DEDICATION 7120D ET

94% Purebred Gelbvieh Bull 1357810

Homozygous Black

2/4/2016

BW: 89

WW: 685

Homozygous Polled

DLW 7120D

YW:

MCJ RJ HIGHLIGHT 732H

CTR HIGHLIGHT 066K

CTRG 442D

DLW WARDON 24W OF 408

DLW MS WARDON 2510Z ET

FHG FLYING H 217B/EC203N ET

CTR SARGE 563E

MCJ RJ 529E

CTR CEDAR TOP'S BERKLEY

POW MISS SANDHILLS 65A

HYEK BLACK IMPACT 3960N

DLW MS KINGPIN 408P

FHG VVFG FLYING H EXCLUSIVE

CKA WOODLAND BELLE 217B

WARNER BEEF GENETICS • ARAPAHOE, NE

Entry 11

If you are searching for a purebred bull with an unbelievable amount of style HERE HE IS! BARG Executive 375D ET is a very clean fronted, big boned, sound structured bull with tons of style and balance. Not only does BARG Executive have that appearance that every breeder strives for, he is also packing an outstanding pedigree. His DAM BARG Jewell 602 has found herself to be the top purebred donor cow producing two back to back NCC Champions in 2013 & 2014. Be sure to look this one up. We are looking forward to your professional opinion!



| CED | BW | WW | YW | MK | TM | CEM | YG | CW | REA | MB | FPI |
|-----|------|----|----|----|----|-----|-------|----|------|-------|-------|
| 12 | -0.9 | 58 | 77 | 22 | 52 | 7.8 | -0.23 | 14 | 0.26 | -0.01 | 62.85 |

GGGE 3G EXCELLENCE 063X
GGGE 3G ZIP LINE 266Z

GGGE 3G COWGIRL WINNIFRED 982
XXB TITUS 880K
BARG JEWEL 602R ET

EGL G565

GGGE 3G TIME MACHINE 758T ET
GGGE 3G COWGIRL NIK 325N
GGGE 3G SPACE COWBOY
GGGE 3G COWGIRL 747T
MRCO NEW DIRECTION 905
DFW MISS ECHO J880
EVE MR BEAU JANGLES 308B
EGL D594

BARG EXECUTIVE 375D ET

94% Purebred Gelbvieh Bull 1364102

Double Black

2/4/2016

BW: 80

Double Polled

BARG 375D

YW:

WW: 656

BARWICK GELBIEH • ORLEANS, NE

Entry 12



Check out this unique breeding piece! RID R American Grit 6015D is the natural son of AAD R True Grit 1103Y and first calf heifer RID R Ima Lady 1403B ET. True Grit is a bull we raised and kept as a herd sire for his added length of body, rib expansion, clean front, and overall style and correctness. He was the Grand Champion Gelbvieh Bull at the 2012 Junior Classic in Missouri. American Grit's dam is a daughter of Carolina Exclusive 1230Y and Bar GT IMA Lady 437H. Exclusive has sired two National Champion Gelbvieh Bulls and many division champions, including 1403B who was the Gelbvieh Heifer Calf Champion at the 2014 NAILE. IMA Lady 437H is the matriarch of the Ridinger Cattle Company program. She is the dam of RID R Shotgun Slade, and several of her daughters have entered our donor pen, including 1403B. There has yet to be a direct IMA daughter to leave the herd because of the value we place on her and her influence in our program. American Grit 6015D is homozygous polled, heterozygous black, and had a scale-busting 205-day adjusted weight of 826 pounds for a 113 ratio and WDA of 3.67. Here is a bull with True American Grit.

| CED | BW | WW | YW | MK | TM | CEM | YG | CW | REA | MB | FPI |
|-----|-----|----|-----|----|----|-----|-------|----|------|-------|------|
| 7.4 | 2.8 | 83 | 122 | 24 | 66 | 4.1 | -0.38 | 46 | 0.72 | -0.19 | 85.5 |

RID R AMERICAN GRIT 6015D

94% Purebred Gelbvieh Bull 1364163

Heterozygous Black

2/5/2016

BW: 82

WW: 826

Homozygous Polled

RID 6015D

YW:

BABR RID ROOSTER COGBURN 854U

AAD R TRUE GRIT 1103Y

RID R LONI 901W ET

CCRO CAROLINA EXCLUSIVE 1230Y

RID R IMA LADY 1403B ET

JCGR BAR GT IMA LADY 437HET

BABR WHO HOTT 552R

GDX 464P

JCGR BAR GT FLASHBACK 410M ET

JCGR BAR GT LONI 27N ET

DCSF POST ROCK SILVER 233U1

CCRO MS C-CROSS EC / 7309T

JCGR BAR GT ICON 1115F

WRGA MS 16B

RIDINGER CATTLE COMPANY • DEER TRAIL, CO

Entry 13

Commissioner is the result of the ET mating between Carolina Exclusive 1230Y and JCGR Bar GT Ms Hepburn 113T ET – two animals in the Gelbvieh breed who need no introduction. Exclusive is the trait leader for growth and carcass, who's progeny is making names for themselves in the showing and out as productive females and outstanding herd sires. Exclusive progeny has average adjusted performance data of 82-lb. birth weights, 628-lb. weaning weights, 1079-lb. yearling weights, with average adjusted scan data of 12.11 REA, 3.388 %IMF, and 0.17 Fat. We continue to use Exclusive in our AI and ET programs, as well as turning him out on cows for our spring and fall breeding seasons. Ms Hepburn 113T is one of our elite donor dams. Her 27 natural and ET progeny have an average weaning weight ratio of 107 and an average yearling weight ratio of 113. A Hepburn daughter sold in the 2015 National Gelbvieh Sale for \$15,000. Commissioner is homozygous polled by pedigree and black, out of a red dam, and had a birth to weaning spread of 82 lbs. to 749 lbs. Vote Commissioner as your Futurity Champion.



| CED | BW | WW | YW | MK | TM | CEM | YG | CW | REA | MB | FPI |
|-----|-----|----|-----|----|----|-----|-------|----|-----|------|-------|
| 6.2 | 3.1 | 72 | 108 | 29 | 65 | 1.5 | -0.38 | 38 | 0.6 | 0.09 | 76.09 |

DCSF POST ROCK SILVER 233U1
CCRO CAROLINA EXCLUSIVE 1230Y

CCRO MS C-CROSS EC / 7309T
RID R COLLATERAL 2R

JCGR BAR GT MS HEPBURN 113TET

WRGA BAR GT DAWN

DMRS SARGE 635S
DCSF POST ROCK WILMA 261P1 ET
FHG VVFG FLYING H EXCLUSIVE
FHG CAROLINA MS 3661L 5124R
JCGR BAR GT FLASHBACK 410M ET
JCGR BAR GT LONI 27N ET

WRGA 049C

JCGR BAR GT COMMISSIONER 160D ET

88% Purebred Gelbvieh Bull 1363931

Black

2/7/2016

BW: 82

Homozygous Polled

JCGR 160D

YW:

WW: 749

JUMPING COW GELBIEH • RAMAH, CO

Entry 14



Every now and again a sire comes along that makes you look and then look again! DVE Davidson Morley 84D's profile is long, but what his real attribute is, is his width, he just looks like the kind of bull that will contribute the extra pounds come fall! Sired by TIP MR Banjo 18B, a highly sought after bull we purchased at Auction for \$21,000. He has imparted an impressionable first set of calves here at Davidson Gelbvieh, all out of first calf heifers. His Dam has an ideal udder and is sired by DVE Davidson Hoss 1X, a highly respected sire group at our 2016 Bull Sale. Dark red in color, you'll acknowledge this bull for his moderate birth weight, his growth, he weighed 1064 lbs at just under 10 months of age and his over all look!

| CED | BW | WW | YW | MK | TM | CEM | YG | CW | REA | MB | FPI |
|-----|-----|----|----|----|----|-----|-------|----|------|-------|-------|
| 8.9 | 1.9 | 73 | 91 | 33 | 65 | 6.5 | -0.19 | 27 | 0.32 | -0.26 | 58.46 |

DVE DAVIDSON MORLEY 84D

94% Purebred Gelbvieh Bull CDGV158483

Red

Heterozygous Polled

2/10/2016

DVE 84D

BW: 86

WW: 876

YW:

DVE DAVIDSON MAJOR 164Y

TIP MR BANJO 18B

DTJ PRAIRIE JEWEL P37

DVE DAVIDSON HOSS 1X

DVE DAVIDSON MS HOSS 112B

FRL FIR RIVER MISS T-MACK 2U

DVE DAVIDSON REMIE 41U

DVE DAVIDSON MS DESIGN 149T

BTI 2085L

SLC PARKLAND JEWEL 51M

DVE DAVIDSON COWBOY 20U

DVE DAVIDSON MS SECRET 78U

LJSA T-MACK 470P ET

SBR L058 LULLABY S33

DAVIDSON GELBVIEH • PONTEIX, SK, CANADA

Entry 15

Hilltop Farms is proud to present HTFB Mr. Duramax D624 as our 2017 Breeders Choice Bull Futurity entry. There's no doubt Duramax has been a standout among our spring calves since he hit the ground. This square hipped, stout made individual is sure to turn some heads as he is very attractive on the profile and ties nicely up through his front 1/3. Not to mention Duramax is a Homozygous Polled non-diluter candidate that has already proved himself in the showring as he was named the champion winter bull calf Champion at the 2016 Tulsa State Fair. This 88% is not only easy on the eye he too on paper is just as impressive. Without question BNC Mr. Hojer Y062 certainly stamps his off-spring as we have many females in production out of this great sire and they are money makin' mommas, and we feel Duramax will fill his sires footsteps quite well. JRI Ms. Naturally Sweet is a no miss female as she knows how to raise the great ones. Be sure to look up Duramax in our stall in Denver and thanks for your consideration. Hilltop Farms is committed to raising quality seedstock.



| CED | BW | WW | YW | MK | TM | CEM | YG | CW | REA | MB | FPI |
|------|------|----|----|----|----|-----|------|----|-----|-------|------|
| 12.4 | -1.3 | 65 | 98 | 24 | 57 | 7.9 | -0.3 | 26 | 0.3 | -0.21 | 73.4 |

BNC MR HOJER Y062

JDPD ASTRO 407S

BNC R565

JRI PROFIT AGENT 46N

JRI MS NATURALLY SWEET285U37

JRI MS LADY BUG 285S997 ET

JDPD ROLEX 151M

HAD PRINCESS OF ALOT 407P

HAD THE JUDGE ET

BNC M272

JRI PLD FREE AGENT 125J3

LACY LACY MISS LOGAN 46G

BTI EXTRA 2106K ET

JRI MS SHOW N TELL 285L89 ET

HTFB MR DURAMAX D624

88% Purebred Gelbvieh Bull 1357619

Red

2/13/2016

BW: 84

WW: 769

Homozygous Polled

HTFB D624

YW:

HILLTOP FARMS • ASBURY, MO

Entry 16



Prairie Hills is excited to present PHG Dominator D78 as our entry in this years bull futurity. While he may be one of the youngest calves in the futurity, he's definitely not shy on performance or looks. Dominator posted an 82 pound birthweight, and then tipped the scales with a 913 weaning weight. His sire is the \$29,000 BABR Dominance 4280B bull we purchased from Beastrom Ranch. Dominance was the anchor bull in their reserve champion Pen of Three and we are blown away with his first calf crop. Dominator shows the same softness, fluid movement, and thickness that drew us to his sire. His dam is a 2012 daughter of RWG Final Thrust. The Thrust daughters have been wonderful mothers with near perfect udder confirmation, fertility, and femininity. PHG Dominator D78 is truly a unique individual. He has the thickness, the performance, and masculinity of his sire, coupled with the smoothness and structural soundness of his dam. He checks plenty of columns on paper as well, being in the top 1/3 or better on over 10 EPD traits before genomics! He's also no stranger to the champion drive, winning a tough class at the Canadian National show at Agribition in November, and then being slapped as reserve division champion. He'll be a part of our Pen of 3 and will be stalled down in The Yards. Take a good look at Dominator D78, we think you'll like what you see!

| CED | BW | WW | YW | MK | TM | CEM | YG | CW | REA | MB | FPI |
|-----|-----|----|----|----|----|-----|-------|----|------|------|------|
| 11 | 2.9 | 69 | 90 | 24 | 58 | 4 | -0.26 | 27 | 0.22 | 0.09 | 68.4 |

PHG DOMINATOR D78

Purebred 88% Gelbvieh Bull 1353455

Black

3/20/2016

BW: 82

WW: 913

Homozygous Polled

PHG D78

YW:

CTR CTR SANDHILLS 0065X
BABR DOMINANCE 4280B

PHG Z98

BEA CINDY LOU WHO ET
RWG FINAL THRUST X.E.S 0535

CVV MISS 30X

CTR SANDMAN 6523S
CTR 7281T
RID R COLLATERAL 2R
BEA ELLA ET
RWG TOTALLY-EXPOSED 7918 ET
VG VALLEY MISS 55R
DVE DAVIDSON TRIPLEPLAY
CVV MISS 76T

PRAIRIE HILLS GELBIEH • GLADSTONE, ND

Entry 17

DLW TPG DENSITY 1017D is an exciting fresh sire that offers a new look to the purebred breeders. An ET son of the Matron 802U donor cow that proves her worth with every calf crop. Many will recognize the dam for her progeny of Alumni, Future Trend, New Frontier, Sand Trap, Jackpot, and more females than I can list. This is the first calf crop by CTR Wide Tracks and we can't be more excited! He offers cow a cow family that blends notable sires like About Time, Sandman, Double Shot, along with several tremendous females. Density offers a contemporary look in a dynamic genetic package that is sure to please the most difficult breeder. Vote with confidence.



| CED | BW | WW | YW | MK | TM | CEM | YG | CW | REA | MB | FPI |
|-----|-----|----|-----|----|----|-----|-------|----|------|-------|-------|
| 8.5 | 1.9 | 76 | 109 | 34 | 72 | 6 | -0.51 | 37 | 0.55 | -0.04 | 75.93 |

RWG TRACTION 7412
CTR WIDE TRACK 3706A ET

CTR 198L
DLW MR KINGSTON 106P
DLW MS MATRON 802U

DLW MISS RT 338 703S ET

RWG ROYAL RESERVE 5066
RWG NINE LIFE KITTY 21N
JBOB CAROLINA CPR
CTR CEDAR TOP'S 344C
KCF BENNETT KINGPIN K403
DLW 1070M
HYLINE RIGHT TIME 338
DLW MS HERO 8862H

DLW TPG DENSITY 1017D ET

88% Purebred Gelbvieh Bull 1358474

Homozygous Black

2/26/2016

BW: 92

WW: 683

Homozygous Polled

DLW 1017D

YW:

WARNER BEEF GENETICS • ARAPAHOE, NE

Entry 18



Hightower Cattle Company is pleased to present our 2017 Bull Futurity Entry, HIGH Hard to Find 26D36. This Black, Double Polled bull is clean fronted, with tons of extension, soggy made and sound footed. He is a powerfully constructed bull that will sire extra pounds to his progeny. He made his start as at 80 pounds before weaning off his tremendous dam at 740 pounds with no creep or supplement, just fescue grass and mineral. His soon to be Donor Dam HIGH Ms Evelyn 26Z3 has been doing her part for our cow herd, raising 3 tremendous bull calves, all exceptional in their design and performance, on a 384 day calving interval. Her first calf is working in our herd as our calving ease herd sire, while her second calf was one of the first bulls sold off our Farm this past spring. On the Paternal side, we have our resident herd sire HIGH Gold Rush 9A38, a son of the 2010 Reserve National Champion Bull, CIRS Goldfinger and super donor cow, Berry Crush 9Y3. Berry Crush would be a Dam of Merit, if only we weren't so intent on flushing her. This highly productive cow averages 11 embryo's per flush and has produced the majority of our best cattle ranging from HIGH Miranda to HIGH Stands Alone. Please take this opportunity to evaluate the best that we have to offer because as we all know, a great Gelbvieh bull is Hard to Find.

| CED | BW | WW | YW | MK | TM | CEM | YG | CW | REA | MB | FPI |
|-----|-----|----|-----|----|----|-----|------|----|------|-------|-------|
| 5.5 | 2.9 | 85 | 117 | 28 | 70 | 6 | -0.5 | 42 | 0.45 | -0.19 | 82.41 |

HIGH HARD TO FIND 26D36

88% Purebred Gelbvieh Bull 1357815

Black

3/9/2016

BW: 80

Double Polled

HIGH 26D36

YW:

WW: 740

CIRS 12LW ET

HIGH MR GOLD RUSH

CAEN MS BERRY CRUSH 9Y3 ET

DCSF POST ROCK GRANITE 200P2

HIGH MS EVELYN 26Z3

HCCG MS 26X15

EGL FOSTERS LO17 ET

JBOB 1222G ET

*NVG RED FINE LINE MULBERRY 26P

JRI MS CAREFREE 9M93

BTI GRANITE 2135M

DCSF POST ROCK TWILA 223M2

WVR WEAVER LESTER 27L

HCCG MS DRUSILLA 26S3 ET

HIGHTOWER CATTLE COMPANY LLC • LACYGNE, KS

Entry 19

CIRS Duramax 918D is a very solid, well-balanced bull that has all of the right pieces. He has a big, soggy-middle, he's big-topped and he moves very fluently on a big hoof. His dam, Loretta 918W is as strong a cow as you will find in any program. Together, the pair captured Grand Champion Gelbvieh Female honors at the Kansas State Fair and Champion Cow-Calf at the American Royal. As an individual, Duramax was also the Grand Champion Gelbvieh bull at the Kansas State Fair and a Division Champion at the American Royal as well. Check out his very balanced EPDs. This is the first bull calf out of the famed Power Built bull that we purchased at Post Rock's sale in 2015. As always, we appreciate our fellow breeders' consideration and vote for CIRS Duramax. We'll see you in Denver!



| CED | BW | WW | YW | MK | TM | CEM | YG | CW | REA | MB | FPI |
|-----|-----|----|-----|----|----|-----|-------|----|------|-------|-------|
| 10 | 0.1 | 68 | 101 | 22 | 57 | 1.2 | -0.29 | 29 | 0.35 | -0.18 | 68.14 |

JRI TOP PRODUCER 282Z3
DCSF POST ROCK POWER BUILT 37B8

DCSF POST ROCK WILMA 298Z8 ET
CGCC PLD RENAISSANCE 326N
CGCC MISS LORETTA 918W

CGCC MISS SECRET AGENT 313N

JRI POP A TOP 197T83
JRI MS GRAND CANYON 282S2
TAU MR KRUGERRAND 70M 130P
DCSF POST ROCK WILMA 261P1 ET
JRI PD RESOURCE 197E51
ARN MISS ARNOLD 145D
JRI PLD FREE AGENT 125J3
CGCC 8109H

CIRS DURAMAX 918D

88% Purebred Gelbvieh Bull 1356535

Red

4/4/2016

BW: 80

Homozygous Polled

CIRS 918D

YW:

WW: 691

CIRCLE S RANCH • CANTON, KS

Past Winners

| | | | |
|------|------------------|------|------------------------------|
| 1998 | GKT Bud | 2008 | ACKG Dakota 3T |
| 1999 | SPUR Beretta | 2009 | DVE Davidsons Powerhouse 13U |
| 2000 | GKT Boo Ba | 2010 | CIRS Decade 278U2 |
| 2001 | XXB Drew | 2011 | BEA Passion 011X ET |
| 2002 | EGL Fosters | 2012 | PLA Big Dog 101Y |
| 2003 | TJB Jagermeister | 2013 | PHG Rockin the Bakken Z17 |
| 2004 | XXB Titanium | 2014 | DLW Alumni 7513A |
| 2005 | PMG Pegasus | 2015 | BDCG DC Businessman 401B ET |
| 2006 | XXB Big N Rich | 2016 | RTRT Great Divide 503C |
| 2007 | RTRT Solution | | |

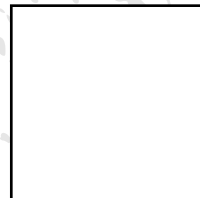
Breeder's Choice

Gelbvieh Bull Futurity





Mitchell Marketing Service
2262 C Avenue, Gladbrook, IA 50635



FIRST CLASS