



# *National* **GELBVIEH AND BALANCER<sup>®</sup>** *Sale*

HELD IN CONJUNCTION WITH THE NATIONAL WESTERN STOCK SHOW  
DENVER, COLORADO

**SUNDAY JANUARY 11 1:00 PM (MT)**  
**LIVESTOCK CENTER AUCTION ARENA IN THE YARDS**  
**20 ELITE GELBVIEH AND BALANCER<sup>®</sup> LOTS**

SALE SPONSORED BY THE AMERICAN GELBVIEH ASSOCIATION

# THANK YOU NATIONAL GELBVIEH MEAL SPONSORS

**Cedar Top Ranch, Stapleton, Nebraska**  
**Dobson Ranch, Kaw City, Oklahoma**  
**Hojer Gelbvieh, Lake Preston, South Dakota**  
**Little Windy Hill Farms, Max Meadows, Virginia**  
**Overmiller Gelbvieh, Smith Center, Kansas**  
**TJB Gelbvieh, Chickamauga, Georgia**

*The Complimentary National Gelbvieh Lunch will be served in the Livestock Center Sale Arena following the National Pen Show and prior to the National Gelbvieh and Balancer® Sale.*



## 2015 American Gelbvieh Association Annual Convention and NWSS Activities

**Tuesday, January 6**  
8:00 a.m. Cattle begin arriving – NWSS

**Wednesday, January 7**  
7:00 p.m. Cattle in place on the Hill and in the Yards – NWSS

**Thursday, January 8**  
8:00 a.m. Yard and Hill cattle check-in – NWSS  
11:00 a.m. to 12:00 p.m. AGA Executive Committee Meeting – DoubleTree  
12:00 p.m. to 3:00 p.m. Lunch and AGA Board of Directors meeting – DoubleTree  
7:00 p.m. AGA Registry Service training – General DoubleTree

**Friday, January 9**  
**Morning** Free to attend NWSS  
11:00 a.m. AGA Registry Service training – DNA Focus DoubleTree  
1:00 p.m. to 1:15 p.m. Opening Session: Welcome by President Rob Arnold – DoubleTree  
1:15 p.m. to 2:45 p.m. Panel 1: Maternal Selection Process; Utilizing DNA and Selection Indexes by Dr. Scott Speidel and Greg Comstock; Moderator Kari White – DoubleTree  
2:45 p.m. to 3:00 p.m. Break  
3:00 p.m. to 4:30 p.m. Panel 2: Maternal Value; Gelbvieh Females by Dr. Patsy Houghton and Brian Dunn; Moderator Kari White – DoubleTree  
5:30 p.m. to 6:30 p.m. Gelbvieh Profit Partners Annual Stockholders Meeting – DoubleTree  
7:30 p.m. to 8:30 p.m. Breeder's Choice Gelbvieh Bull Futurity & People's Choice Balancer® Bull Futurity meetings – DoubleTree

**Saturday, January 10**  
7:30 a.m. to 9:45 a.m. Gelbvieh and Balancer® Junior Heifer Show – NWSS Stadium Arena  
10:00 a.m. to 12:45 p.m. Breeder's Choice Gelbvieh Bull Futurity and People's Choice Balancer® Bull Futurity – NWSS Stadium Arena  
2:30 p.m. to 2:55 p.m. Pick up ballots for Board of Directors voting – DoubleTree  
3:00 p.m. to 5:00 p.m. AGA annual membership meeting and election of Board of Directors – DoubleTree  
5:15 p.m. to 6:15 p.m. AGA Board of Directors meeting and photo – DoubleTree  
6:15 p.m. to 7:00 p.m. AGA Member social – DoubleTree  
7:00 p.m. AGA Awards Presentation and Gelbvieh and Balancer® Bull Futurity Recognition DoubleTree – (American Gelbvieh Foundation Kick-off event; Introduce Guests; Recognize Outgoing Board of Directors; Hall of Fame Presentations; Junior Fundraiser Heifer Ticket Auction; Balancer® Bull Futurity Recognition; Gelbvieh Bull Futurity Scholarship Presentation, Championship Recognition, and Bingo Ball)

**Sunday, January 11**  
8:00 a.m. Gelbvieh and Balancer® Pen Bull Show – NWSS Livestock Center  
11:30 a.m. Lunch – NWSS Livestock Center  
1:00 p.m. National Gelbvieh and Balancer® Sale – NWSS Livestock Center  
5:30 p.m. AGA Board of Directors meeting – DoubleTree

**Monday, January 12**  
8:00 a.m. National Gelbvieh and Balancer® Show – NWSS Stadium Arena  
7:00 p.m. Begin release of Hill cattle (out by 10:00 p.m.)  
Yard cattle released at 7:00 a.m. on Tuesday (out by 4:00 p.m.)



# National GELBVIEH AND BALANCER<sup>®</sup> Sale

**SUNDAY JANUARY 11 1:00 PM (MT)**  
LIVESTOCK CENTER AUCTION ARENA IN THE YARDS

## AUCTIONEER

Doak Lambert

972-839-6485

## REPRESENTATIVES

William McIntosh, *Gelbvieh World* 502-867-3132

Bill Angell 970-396-5594

Jay Elfeldt 308-293-3049

Troy Applehans 303-886-0775

## NATIONAL SALE COMMITTEE

Dan Warner

Grant Thayer

Ken Flikkema

Roger Gatz

Neal Pearson

David Slaughter

Walt Steinhage

Chris Mitchell

Randy Sienknecht

## BID LIVE ONLINE

Register and bid live online at [www.liveauctions.tv](http://www.liveauctions.tv)

**LiveAuctions** TV

## SALE CATTLE VIEWING

All sale cattle will be on display one hour prior to sale time on the north side of sale arena.

## DNA TESTING

All cattle selling have been DNA parent verified and tested free of genetic defects.

## SUPPLEMENT

A supplement sheet will be available sale day with all updates to the sale book.

## TERMS AND CONDITIONS

All cattle sell under the standard terms, conditions and rules recommended by the American Gelbvieh Association.

## SALE MANAGEMENT

**MMS**

[www.mms.bz](http://www.mms.bz)

Chris Mitchell 334-695-1371

Randy Sienknecht 319-290-3763

2262 C Avenue, Gladbrook, IA 50635



# BREEDER'S CHOICE BULL FUTURITY CHAMPION

*lot 1*



2014 BREEDER'S CHOICE GELBVIEH BULL FUTURITY CHAMPION

**Selling full possession and 50% semen interest.**

The winner of the 18th Annual Breeder's Choice Gelbvieh Bull Futurity is a sale attraction every year selling as lot 1 in the National Gelbvieh and Balancer Sale. The Breeder's Choice Gelbvieh Bull Futurity brings out many of the top young purebred Gelbvieh bulls that would not be sold outside these programs unless they win the Futurity. The winning bull is only available for breeding by the futurity members and purchasers of the bull in the National Sale for the next 2 years. Past winners of the Breeder's Choice Bull Futurity have gone on to win 3 National Champions and 2 Reserve National Champions the following day and have developed into very unique breeding pieces for the future of the Gelbvieh Breed. The 2014 Breeder's Choice Bull Futurity Champion topped the National Gelbvieh and Balancer Sale at \$34,000.

Contact futurity managers Chris Mitchell or Randy Sienknecht for purchasing possessions or semen packages to be sold on the Breeder's Choice Gelbvieh Bull Futurity Champion as Lot 1 in the National Gelbvieh and Balancer® Sale.



# lot 2

## TJB Gelbvieh Pick of HERD FEMALE



TJB 823T

TJB Gelbvieh is offering choice of any female in the TJB program that is owned by TJB Gelbvieh. This herd has been in production since 1988 and has been built entirely on the selection and propagation of proven elite females. You can choose from proven cow families such as Vickie Vail, Anissa, and Lady Granite. These families have been the strength of the herd since their inception. The "Maternal Magic" theme has been created and followed without exception. It is the belief of the program that the true strength offered in a maternal breed such as Gelbvieh lies entirely in the power of the females the program is built upon.

Buyer may choose any female in the TJB program that is solely owned by TJB Gelbvieh. This includes donors, mature cows, bred heifers and open heifers that carry the TJB prefix.

TJB Gelbvieh is a fall calving herd. Most of the cattle offered will have calved from September through December. There are five donors that were flushed this past year and are currently being rebred at this time.

#### Terms and Guarantee:

TJB Gelbvieh guarantees you a minimum of 20 embryos produced in the first year. If that guarantee is not fulfilled, embryos from donors mutually agreed upon by both parties will be provided.

TJB Gelbvieh, Chickamauga, Georgia  
Dr. Todd Bickett 423-667-3799



TJB 016W



TJB 913U



# CCRO CAROLINA LEVERAGE 3214A SEMEN PACKAGES

*lot 3*



CCRO CAROLINA LEVERAGE 3214A, SEMEN PACKAGE SELLS AS LOT 3

CCRO Leverage 3214A is one of the most exciting young homozygous black, homozygous polled purebred Gelbvieh herd sire prospects to emerge on the scene in the fall of 2014. Leverage was the high selling bull in the C-Cross Cattle Company Fall 2014 production sale selling to J and K Farms in Ava, Illinois. The decision was made to not place CCRO Leverage 3214A semen on the public market. With this decision, J and K Farms and C-Cross Cattle Company made the decision to syndicate him offering semen packages for sale in the National Gelbvieh and Balancer Sale. Leverage is AI qualified through the American Gelbvieh Association with all DNA testing complete with HD Genomic EPDs and free of all genetic defects.

This young homozygous black homozygous polled herd sire comes from the great JBOB 3403K cow family and sired by the low birth, calving ease sire, VRT Lazy TV Sam U451. Leverage was the first calf out of CCRO 1309Y that now has, what is said to be, the top fall calf on the ground at C-Cross. Leverage combines calving ease, low birth, performance and carcass into a complete package that is backed by his Genomic Enhanced EPDs. He ranks in the top 1% for calving ease, yield grade and FPI, the top 10% for low birth, weaning weight, yearling weight, milk and ribeye area. Leverage is a smooth made, free moving bull that excels in muscle, thickness and depth of body.

## TERMS AND CONDITIONS OF CCRO LEVERAGE 3214A SEMEN PACKAGES

One Package of CCRO Leverage 3214A semen:

\$1500 for 40 units of semen

Additional packages of CCRO Leverage 3214A semen are available to breeders wanting to buy more than 40 units: \$1000 for an additional package of 40 units of semen. Buyer may purchase as many packages of semen as he/she would like. When the sale of Leverage through the ring is complete on sale day no more semen will be offered for sale for the life of the bull except to the syndicate package purchasers. Starting January 15, 2017 syndicate members may purchase semen on CCRO Leverage 3214A for \$15 per unit from J and K Farms or C-Cross Cattle Co. Only syndicate members can register calves out of CCRO Leverage 3214A unless a female is sold bred to him. Syndicate members are not permitted to sell their syndicate membership or semen to anyone. CCRO Leverage 3214A is in collection now with all testing in process for domestic semen and Canadian semen. Shipping will take place when completion of all semen sold is frozen and ready for shipment. All collection and freezing cost are paid by sellers and semen shipping cost to buyer is paid by buyer. Contact J and K Farms, C-Cross Cattle Co, or Mitchell Marketing Service to purchase semen packages.

Purebred 88% Gelbvieh Bull						Homozygous Black			Homozygous Polled				
9/29/2013						CCRO 3214A			1281559				
KHR SAM SPADE 02S						KHR 03N							
VRT LAZY TV SAM U451						KHR 413P							
VRT LAZY TV MS FULLBACK L643						WAC FULLBACK 011G							
DCSF POST ROCK GRANITE 200P2						VRT LAZY TV E271							
CCRO BELLE OF THE BALL 1309Y						BTI GRANITE 2135M							
						DCSF POST ROCK TWILA 223M2							
						LEACHMAN RIGHT TIME							
CCRO MS BOMBSHELL 9347W ET						JBOB 3403K ET							
CED	BW	WW	YW	MK	TM	CEM	YG	CW	REA	MB	FT	FPI	
16	-1.5	79	112	36	76	5	-0.58	33	0.65	-0.17	-0.06	77.95	

Genomic Enhanced EPDs.



*lot 4*

# JUMPING COW GELBVIEH PICK OF DENVER SHOW STRING



JCGR BAR GT HEPBURN 244A

Jumping Cow Gelbvieh is pleased to offer once again the pick of our National Western Stock Show string in the National Sale. Many "great ones" have come from this pick including a National Champion Female and a National Champion Bull. Be sure to stop by our stalls in Denver or visit us online to see the impressive lineup of this year's show string. Complete information, including pedigrees, photos and videos, of all animals selling in the pick can be viewed at [www.JumpingCowGelbvieh.com](http://www.JumpingCowGelbvieh.com).

All of the Jumping Cow Gelbvieh animals in Denver are offered in this pick. Jumping Cow Gelbvieh retains 1/3 semen interest on any bull selected, and the right to one flush, at the buyer's convenience and seller's expense, of any female selected. Buyer must make selection before animals leave the sale ring.



JCGR LAYLA 163B



JCGR BAR GT EXCLUSIVE RIGHTS



JCGR BAR GT RENO 31B

Jumping Cow Gelbvieh  
Ramah, Colorado  
Grant Thayer 303-324-6955  
Brad Ridinger 303-810-0582



# BEASTROM GELBVIEW/VOLEK RANCH

## CHOICE OF DONOR FLUSH

*lot 5*

### BABR GUENIVERE 1015Y ET

25%GV 75%AN Balancer Cow    Homozygous Black    Homozygous Polled  
2/14/2011    BABR 1015Y    1196378

SIRE: S A V BRILLIANCE 8077  
DAM: BMB 7061T

CED	BW	WW	YW	MK	TM	CEM	YG	CW	REA	MB	FT	FPI
15	-0.9	72	116	30	66	13	0.04	37	0.4	0.49	0.02	86.3

2012 Champion Balancer Female at the Black and Gold Classic, 2012 Champion Balancer Female at the South Dakota State Fair, 2012 Champion Balancer Female at the American Royal, 2013 National Champion Balancer Female at the NWSS and Ring of Gold Champion. Guenivere comes from a long line of great producing females beginning with her great grand dam Hott Damn, who may be one of the most well known cows in the Gelbvieh breed with sons, grandsons and great grandsons working in many purebred and commercial homes. She is a cow that keeps rising to the occasion and all of her daughters are either equal in production or out producing her. Such as BABR Hott 100 who has produced the 2009 National Champion Female BMB Extra Hott 7061T who was purchased by Thorstenson Gelbvieh and Blackhawk Gelbvieh. We retained one flush pending the sale and that flush produced BABR Guenivere along with her two Full ET brothers BABR 114Y ET and BABR 115Y ET. BABR 114Y was purchased by Raile Gelbvieh and has quickly become a sire that offers fleshing ability, low actual birth weights coupled with performance and carcass value. Much like 114Y Guen offers balance, phenotype carcass value structural soundness and is a very unique breeding piece that never has a bad day. She has had two calves to date, one is a son of Bar GT Crossfire 500W who will be offered in auction at the 2015 BHSS and the other is a very fancy heifer calf sired by BABR Secret Brand 2100Z, and she is going to follow in her mother's footsteps. She has been flushed one time for 12 Grade #1 embryos and 2 Grade #2 embryos.

### BVLK CARLEY 120Y ET

Purebred Gelbvieh Cow    Double Black    Double Polled  
4/6/2011    BVLK 120Y    1195662

SIRE: GKG HARLEY  
DAM: ELK CK JEWEL 216M

CED	BW	WW	YW	MK	TM	CEM	YG	CW	REA	MB	FT	FPI
9	2.3	68	97	21	55	6	-0.16	30	0.31	-0.16	-0.06	61.35

2012 Champion Gelbvieh Female at the South Dakota State Fair, 2013 National Champion Gelbvieh Female at the NWSS. Carley is an ET daughter of ELK Jewel who also holds the title of National Champion and there is a long list of favorites that come from this cow family, just to mention a few, BLVK Martini (2011 NWSS Jr Show Champion and NWSS Reserve National Champion Balancer Female) BVLK Piper (2012 NWSS Jr Champion Female) BVLK Remedy (2007 NWSS Division Champion) and BVLK Star (2010 Junior Classic Champion Bred and Owned, 2009 American Royal Reserve Champion and 2010 NWSS Division winner). Jewel has an impressive list of daughters but she can also produce bulls that offer the same performance and balance that she does that are working in countless registered and commercial herds, such as BVLK Cow Town, who is a herd sire that offers consistently low actual birth weights coupled with big performance and outstanding carcass numbers. This is a long list of successes, consistency and balance and we truly believe that Carley will be able to out produce her mother, just look at her first calf BVLK Carley Rae A304. This is a BA50 balancer female that offers fleshing ability, phenotype, and longevity. This is proof of what this cow family is capable of doing for your herd. She has been flushed one time for 10 Grade #1 embryos.

### BVLK CARLEY RAE A304

38%GV 62%AN Balancer Cow    Double Black    Double Polled  
2/7/2013    BVLK A304    1265704

SIRE: S A V BRILLIANCE 8077  
DAM: BVLK BVLK 120Y CARLEY ET

CED	BW	WW	YW	MK	TM	CEM	YG	CW	REA	MB	FT	FPI
15	-1.3	61	97	29	60	10	-0.11	25	0.49	0.2	-0.01	73.87

2014 Champion Balancer Female at the South Dakota State Fair, 2014 Champion Balancer Female at the American Royal



BABR GUENIVERE 1015Y ET



BVLK CARLEY 120Y ET



BVLK CARLEY RAE A304

Jim & Barb Beastrom, Pierre, South Dakota    605-280-7589  
Wes & Brittney Spencer, Pierre, South Dakota    605-280-0204  
Volek Ranch, Highmore, South Dakota    605-871-3603

Jim & Barb Beastrom, Wes & Brittney Spencer and Volek Ranch are teaming up to offer a choice flush on these 3 elite females from our programs. All three females come from prolific cow families that have proven themselves time and time again and offer the EPD's phenotype and structural balance to move any program in a forward direction.

**Terms:** Buyer is guaranteed 6 freezable embryos with a guarantee of 3 pregnancies when implanted by a certified tech. If sire used for flush is a Beastrom or Volek sire, seller will furnish semen, if buyer chooses a sire that is not a Beastrom or Volek sire for flush, buyer covers semen expense and shipping of semen to ET facility. All additional embryos in the flush are available to the buyer at no additional cost. Buyer is responsible for all flush and freeze costs, as well as shipping cost of embryos to final destination.



# lot 6

# ROYAL WESTERN GELBVIEW RWG 21N FLUSH



RWG 21N, SELLING FLUSH OPPORTUNITY AS LOT 6

Purebred Gelbvieh Cow						Heterozygous Black			Homozygous Polled			
1/17/2003						RWG 21N			CDGV95751			
EGL GADGET F1258						JEB POLLED GIZMO 17Z						
EGL GARTH J040 ET						EGL C151 ET						
						JCW POLLED EXPLORER 2017X						
						BMB MISS 78M						
BCM LADY IN BLACK ET						BEA POLLED MIDNIGHT 782W						
TLR COCOA 35C						TLR MISS KAISER 449Y						
TSCC TWIN STAR KITTY 710K						MACD VALHALLA BLACK SYMBOL						
						AKR 027Y						
CED	BW	WW	YW	MK	TM	CEM	YG	CW	REA	MB	FT	FPI
6	1.6	93	151	31	77	10	-0.1	62	0.53	-0.04	-0.06	81.51



RWG NICE & EASY KITTY 2524, DAUGHTER OF LOT 6 AND MATERNAL  
SISTER TO POPULAR AI SIRE RWG TRACTION

RWG Nine Life Kitty 21N plain and simply put is the kind of Donor Female that can dramatically improve a breeding program, and influence a breed. RWG 21N has easily been the most influential female in our breeding program, always setting the standard for progeny quality. To date RWG 21N has built an impressive set of EPD's all based of natural progeny. RWG 21N ranks as an elite purebred female across the board combining; moderate birth, solid calving ease, explosive performance, and great carcass. Ranking in the 1% for WW, YW, CW & FPI top 2% for TM, top 3% for MB and top 10 for REA.

RWG 21N on 12 natural progeny has a combined WW ratio of 108 and a combined YW ratio of 113. With zero ET progeny 21N's impressive list of progeny include; RWG Traction 7412, RWG Unavailable Kitty 8510, RWG Tradition 7411, RWG Winner's Luck 9409, RWG Zip 2503, RWG Amaze 3701 & of course her 2014 born stand-out son RWG Beast 4702 (sired by RWG Yikes 1512) who is easily one of the best sire prospects born in 2014. The options are endless with a purebred donor of this caliber. RWG 21N is backed by the strongest cow family at Royal Western Gelbvieh. This is your opportunity to advance your seed stock program and create the next wave of powerhouse Balancer genetics, or continue setting the standard for some of the most elite Purebred genetics in the breed.

Selling the opportunity to flush RWG 21N to the mating of the buyer's choice with a guaranteed minimum 6 Grade #1 exportable embryos resulting in 3 pregnancies, when implanted by a certified tech. All additional embryos in the flush are available to the buyer at no additional cost. If semen used for flush is a Royal Western sire, seller will furnish semen. If buyer chooses semen that is not a Royal Western sire, buyer covers semen expense and shipping of semen to Royal Western. Buyer is responsible for all flush and freeze costs, as well as shipping cost of embryos to final destination. Seller is responsible for cost of all health testing and papers to export embryos. For additional information, please visit our web site [www.royalwesterngelbvieh.com](http://www.royalwesterngelbvieh.com)



# JRI Ms Lou 207Z23

lot 7



JRI 207Z23, SELLS AS LOT 7



JRI 207U33, MATERNAL GRANDAM OF LOT 7

38%GV 62%AN Balancer Cow      Heterozygous Black      Homozygous Polled  
8/12/2012      JRI 207Z23      1232549

S A F FOCUS OF E R						S A F FAME						
MYTTY IN FOCUS						G D A R FOREVER LADY 246						
MYTTY COUNTESS 906						SITZ ALLIANCE 6595						
JRI TOP SECRET 253M75 ET						BALDRIDGE COUNTESS 357						
JRI MS VICTORIA SECRET 207X43						JRI PLD FREE AGENT 125J3						
JRI MS HOT PURSUIT 207U33						JRI MS PLD FRONTIER 253J60						
						JRI CURVBENDER 285S22						
						JRI MS TRAVELING AGENT207R63						
CED	BW	WW	YW	MK	TM	CEM	YG	CW	REA	MB	FT	FPI
22	-3.6	60	97	25	55	10	-0.34	22	0.33	0.9	0.01	96.08

Genomic Enhanced EPDs.

JRI Ms Lou 207Z23 was Judd Ranch's pick of the fall 2012 calf crop and man oh man Ms Lou features one incredible cow family. That's Ms Lou's awesome maternal grandam JRI Ms Hot Pursuit 207U33 photographed as a 6 year old and this 2014 Dam of Merit female possesses a performance-plus 110 WW and 109 YW ratio. Ms Lou's second-calf dam JRI Ms Victoria Secret 207X43 sports a 104 WW ratio so rest assured, this is one productive, fertility & longevity driven cow family. JRI Ms Lou 207Z23 debuted at this past summer's Junior National Show where she swept Reserve Senior Champion Female honors. Ms Lou will have her November born Top Secret 2 ETN baby at side on sale day and she's the kind that could sweep the National Show.

LOT 7A: Homozygous Polled, 75% Balancer® Bull BD: 11/04/2014 BW: 83 lbs. TATTOO: JRI 207B33  
SIRE: JRI Top Secret 2ETN (1221769)

Judd Ranch Inc.  
Pamona, Kansas  
Dave and Cindy Judd 785-566-8371



# lot 8

## LITTLE WINDY HILL FARMS CHOICE OF FULL SISTERS



LWHF 106A, SELLS AS LOT 8A



BDCG DC FAITH 111P, DAM OF LOT 8



LWHF 105A, SELLS AS LOT 8B

Selling Choice of two of the most impressive young females to be bred here at Little Windy Hill Farms. These two daughters of BDCG DC Faith 111P, the 2006 National Champion Female, express the same look and femininity you will find in Faith. The mating to one of the most prolific and popular Angus sires of all time, N Bar Emulation EXT has given us a very unique breeding piece in these fall aged full sisters. The maternal strength with performance, eye appeal and genetics offers an opportunity for seedstock producers to add a new genetic package to their program with unlimited potential.

Lots 8A and 8B both rank in the top 2% for yield grade, top 20% for marbling and are bred for calving ease and maternal.

Both heifers sell open and ready to breed. Buyer makes choice before heifers leave the ring.

Little Windy Hill Farms  
Max Meadows  
Virginia Doug Hughes 276-620-4271

### LWHF 106A

38%GV 62%AN Balancer Cow Heterozygous Black Homozygous Polled  
9/8/2013 LWHF 106A 1282662

CED	BW	WW	YW	MK	TM	CEM	YG	CW	REA	MB	FT	FPI
9	-1	53	92	25	52	8	-0.33	24	0.24	0.41	0	73.1

Genomic Enhanced EPDs.

### LWHF 105A

38%GV 62%AN Balancer Cow Heterozygous Black Homozygous Polled  
9/6/2013 LWHF 105A 1282661

EMULATION N BAR 5522						EMULATION 31						
N BAR EMULATION EXT						ANKONY 8F78 LASS 8F275						
N BAR PRIMROSE 2424						EMULATION 31						
KIT TABASCO J26 ET						PRIMROSE N BAR 9962						
BDCG DC FAITH 111P						TLR COCOA 35C						
TWA 111M						BETZ MAGIC MUFFIN F64						
						SLC FREEDOM 178F ET						
						HUS HUST 0472 G 4482						
CED	BW	WW	YW	MK	TM	CEM	YG	CW	REA	MB	FT	FPI
9	-0.8	52	89	23	49	9	-0.35	22	0.28	0.38	0	71.3

Genomic Enhanced EPDs.



# PLA DESTINY 402B

lot 9



PLA DESTINY 402B, SELLS AS LOT 9



JBOB 2417J, DAM OF LOT 9

50%GV 50%AN Balancer Cow      Homozygous Black      Homozygous Polled  
2/2/2014      PLA 402B      1291946

S A V FINAL ANSWER 0035      SITZ TRAVELER 8180  
S A V PIONEER 7301      S A V EMULOUS 8145  
S A V BLACKBIRD 5297      BOYD NEW DAY 8005  
CTR ECHO 575E      S A V BLACKBIRD 1082  
JBOB 2417J ET      MCJ BLACK HUSKER  
JBOB MISS 92C      CTR CEDAR TOP'S MISS POWER  
DDL MR SHERMAN TANK  
LDL LL MISS AUGUST

CED	BW	WW	YW	MK	TM	CEM	YG	CW	REA	MB	FT	FPI
14	-2	62	98	39	70	8	-0.7	25	1.4	0.36	0	82.65

Genomic Enhanced EPDs.

A Half sister to our 2013 National Sale Entry PLA Zelda, who needs no introduction after taking the show circuit by storm in last two years. This girl is very comparable. She is eye appealing any way you look at her. Feminine, beautiful fronted, soft shouldered and structurally correct with loads of body to go with it. She is a free and easy mover. Her EPD's place in the top 1% for RE and top 2% for Milk. Her sweet heart disposition is just the icing on the cake. We can't wait to see this tremendous female go to the next level! She is a daughter of the famed JBOB "Miss Julia" 2417J donor female that has produced many progeny in donor programs and AI sires through the years. Sells open.

Plateau Gelbvieh  
Peetz, Colorado  
Jim Roelle 970-520-1224



# lot 10 DIAMOND D GELBIEH CHOICE OF SPRING 2014 OPEN HEIFERS



DDGR Arianna 77B Tremendous potential in this deep bodied heifer. Her dam, the DDGR 32S cow, was the dam of the DDGR Navaho 188X bull that was purchased by Davidson Gelbvieh. He has produced very well for them, including the Jackpot sire in use at Cedar Top Ranch and Davidson's 2014 Denver Bull Futurity entry. Also, 32S's two year old Post Rock Silver daughter has one of our top bulls in the pen this year with a 205 day weight of over 800 pounds without creep. 77B has a weaning index of 116 and 32S has a lifetime nursing ratio of 109.



DDGR Sydnee 27B The JKGF W95 sire put some great daughters in our herd before we lost him to an injury. The 116Z first calf heifer did a super job on this In Focus 4925 daughter. Check out her great EPD's that give her an excellent future as a breeding female. Combine that with her super depth and look, along with her individual performance that gave her a weaning ratio of 107, and she will be an asset in any herd.



DDGR Butterscotch 161B If you prefer red genetics, 161B could be your choice. Using the KKC Nobility 123Y sire on the 124Y female that is sired by the EGL Miguel bull proved to be an excellent choice. This flashy, deep bodied heifer had a 703# 205 day weight without creep and a weaning weight ratio of 110. She has a super EPD profile as well. Choose from 10 daughters of the KKC Nobility sire (high selling bull at the Kal Kota 2012 sale), 10 daughters of the DVE Mr Dakota 151X sire high selling bull at Davidson's 2011 sale) or red heifers from the Hart 35W34 AI sire or our other red herdsires.



DDGR Misty 141B Here is another Post Rock Captain daughter who has an outstanding dam. The DDGR 141U cow produced the DDGR Yukon 172Z bull that was purchased by Prairie Hills Gelbvieh. Their 2015 Denver Bull Futurity entry is sired by Yukon. The 141U dam also has one of our top bred heifers coming into production next spring and has a lifetime weaning index of 104. Let this powerful genetic package go to work in your herd or pick from 7 other Post Rock Captain daughters.

**Diamond D Gelbvieh has been breeding Gelbvieh genetics for over 30 years and for the first time ever we are offering the pick of our entire 2014 heifer pen of nearly 120 females, nothing held back. Select your choice from over 50 black purebreds, over 40 red purebreds, 10-15 black Balancers and nearly 10 red Balancers. These include super half sisters of the DDGR Navaho bull, sire of Davidson Gelbvieh's 2014 Denver futurity entry and DDGR Yukon, sire of Prairie Hills Gelbvieh's 2015 Denver futurity entry, both sired by our exciting Post Rock Captain 15322 bull! Other potential choices are sired by VRT Sam U451, Hart 35W34, KKC Nobility 123Y, high selling bull at the Kal Kota 2012 sale, and DVE Mr Dakota 151X, high selling bull at Davidson's 2011 sale. If your preference is Balancers, choose from top end heifers sired by the popular Conneally In Focus 4925, Ellingson Identity, and the proven Red Angus HXC Conquest sire. Our past consignments to the ND Golden Rule sale have included a number of sale toppers and repeat buyers. Take advantage of this offer to add our best genetics to your herd. Buyer must make selection by March 15, 2015.**



# DLW Ms HIGHLY FOCUSED 4234B ET

lot 11



DLW MS HIGHLY FOCUSED 4234B ET, SELLS AS LOT 11



DLW MS MATRON 802U, DAM OF LOT 11

63GV 37%AN Balancer Cow	Homozygous Black						Homozygous Polled					
2/19/2014	DLW 4234B						1291062					
KCF BENNETT QUALITY FOCUSED							MYTTY IN FOCUS					
DCSF POST ROCK HIGHLY FOCUSED							K C F MISS QUALITY P164					
DCSF POST ROCK SANDY 273W2							DCSF POST ROCK MASS APPEAL ET					
DLW MR KINGSTON 106P							DCSF POST ROCK SANDY 268T8					
DLW MS MATRON 802U							KCF BENNETT KINGPIN K403					
DLW MISS RT 338 703S ET							DLW 1070M					
							HYLINE RIGHT TIME 338					
							DLW MS HERO 8862H					
CED	BW	WW	YW	MK	TM	CEM	YG	CW	REA	MB	FT	FPI
19	-2.6	76	115	39	77	13	-0.41	34	0.55	0.55	-0.01	96.28

Genomic Enhanced EPDs.

**Serious breeders take special notice.** This unique breeding female rarely will be offered by Warner Beef Genetics. This heifer stems from a long line of high power females starting with her donor dam, Ms. Matron 802U whom has built a stellar record. Including producing the 2014 futurity champion DLW Alumni 7513A! This bull along with 7 flush brothers all sold to seed stock operations this past year. The prior year she sold the high selling Balancer bull and high selling Purebred bull in the 2013 Warner Beef Bull Sale. This doesn't include a daughter that topped the 2012 "Dozen Diamonds" sale and several high selling females through the Warner production sales. Her grandmother was a flush sister to breed leading AI Sire DLW Stout 695S. 4234B's great grand dam started the production of herd bulls with leading sires such as DLW Natural 862N and DLW Venture 8862K.

Use this female to propel your program to the front of the breed with stats such as Top 1% for CED, MK, TM, CEM, YG & FPI. Plus Top 10% BW, WW, YW, & MB with a Top 20% REA reading. This Homozygous Black and Homozygous Polled female is destined for the donor pen in the future. The excitement for the ability of this female to lift the breed in all traits along with proven cow family production is certainly a rare find. Warner Beef Genetics/ Transpacific Genetics reserves the right to one flush on this outstanding female at the buyer's convenience and at the seller's expense.

Warner Beef Genetics, Arapahoe, Nebraska, Dan, Darren and Monte Warner 308-962-6511



# lot 12

# CIRS ATTITUDE 3204A



CIRS ATTITUDE 3204A, SELLS AS LOT 12

75% Gelbvieh Cow  
2/11/2013

Heterozygous Black  
CIRS 3204A

Double Polled  
1265882

EGL FOSTERS L017 ET

CIRS DECADE 278U2

EGL GAIL M278  
CIRS PROWLER ET

CIRS 354T

SLC FREEDOM 178F ET  
EGL PHOEBE G374  
EGL GUIDO K051 ET  
EGL H802  
SLC FREEDOM 178F ET  
BDCG FINE LADY 643K

CED	BW	WW	YW	MK	TM	CEM	YG	CW	REA	MB	FT	FPI
9	0.9	67	86	33	66	7	-0.51	21	0.28	-0.16	-0.06	64.85

Genomic Enhanced EPDs.

We feel that this purebred bred heifer is one of the best around. She is one of the nicest fronted and prettiest headed purebred heifers we have seen. She combines it with a big foot, stout top, big belly in a moderate framed package. Now it gets better, she is bred to the two time Champion Balancer bull, Insidious. The combination of Decade and Insidious could make the great one! Come see for yourself on the hill. Retaining one flush, guaranteed six grade 1A eggs, at buyers convenience.

Bred 06-23-2014 to XXB Insidious 612Y. Safe and due 4-01-2015.

Riddle & Co., September Farms and Lay Farms  
Franklin, Nebraska 308-991-8127



# BUTLER CREEK FARMS PICK OF FALL 2014 CALF CROP

*lot 13*



BCFG BUTLERS MS DEB 10X

Butler Creek Farms is selling choice of our entire fall 2014 bull and heifer calf crop. This includes all natural and ET fall 2014 open heifer and bull calves. Many of these have an unmatched genetic history of production and show ring champions at a national and regional level. There are approximately 20 fall calves at Butler Creek Farms.

Included in this offering is a full sib to BCFG Butlers Ms Oak Leaf 534Y, 2013 NAILE Grand Champion female and full sibs to BCFG Butlers Ms Deb 10X, the 2012 Reserve National Champion Female in Denver. BCFG 534U, the 2010 Reserve National Champion Balancer Female and SWCC Kalie 801U, the 2010 National Junior Heifer Show Grand Champion Female both have daughters with calves that are also included in the unique "Pick of Heifer or Bull Calves." This offering is endless with possibilities from many of the great females and show champions here at Butler Creek Farms. Come pick your next donor, herd sire or show champion from this impressive set of fall calves. Pick to be made at weaning in the March/April of 2015.

Butler Creek Farms  
Milton, Tennessee  
Michael or Zack Butler 615-351-1071



BCFG BUTLERS MS OAK LEAF 534Y



BCFG CARE FREE 534U



# lot 14

## LEDoux RANCH PICK OF BRED OR OPEN HEIFERS



CHAMPION BALANCER IN 2014 NWSS JUNIOR SHOW



LEDoux RANCH HEIFER

LeDoux Ranch of Agenda, Kansas are breeders of Balancer cattle that fit the future demands of the beef industry. We are striving to produce the most efficient, profit oriented product for us and our customers. We place an emphasis on cattle that work on the ranch and produce bulls that work for the commercial cattleman as well as the purebred cattleman. We have been very fortunate to have bred and produced cattle that work both on the ranch and in the show ring. Over the past few years our product has been in the winner's circle in Louisville, Kansas City, Denver and regional shows. These cattle have also been very efficient and productive for both us and our customers.

This sale offering has approximately 70 head of heifer calves and bred heifers to select from. Heifer calves are sired by Frontman, Industry, Redemption, Tenderloin, About Time, and Upshot. Breds heifers are sired by Frontman, Wingman, Bluestem, Sandman, Derringer, and Jackhammer. Bred heifers are AI'd on 3-26-14 to Redemption or Absolute with pasture exposure to Derringer and Jack'd Up.

LeDoux Ranch  
Agenda, KS  
Andy LeDoux 785-527-3188



# DLW CTR MS SANDHILLS 4505B *lot 15*



DLW CTR MS SANDHILLS 4505B, SELLS AS LOT 15

Truly a classic female for several options. This beautiful red female has potential to lead you to the backdrop as a show heifer and will be a productive female in the pasture. Cedar Top Ranch and Transpacific Genetics teamed up to buy this heifer's dam in the 2013 Beastrom Ranch Dispersal. Seeing the potential in the dam and the opportunity in the mating made the acquisition an easy decision. A producer can never surround themselves with too many outstanding females and this sweetheart will thrill the most difficult critics.

**Warner Beef Genetics**  
Arapahoe, Nebraska  
Dan, Darren and Monte Warner 308-962-6511

**Cedar Top Ranch**  
Stapleton, Nebraska  
Scott Starr 308-530-3900

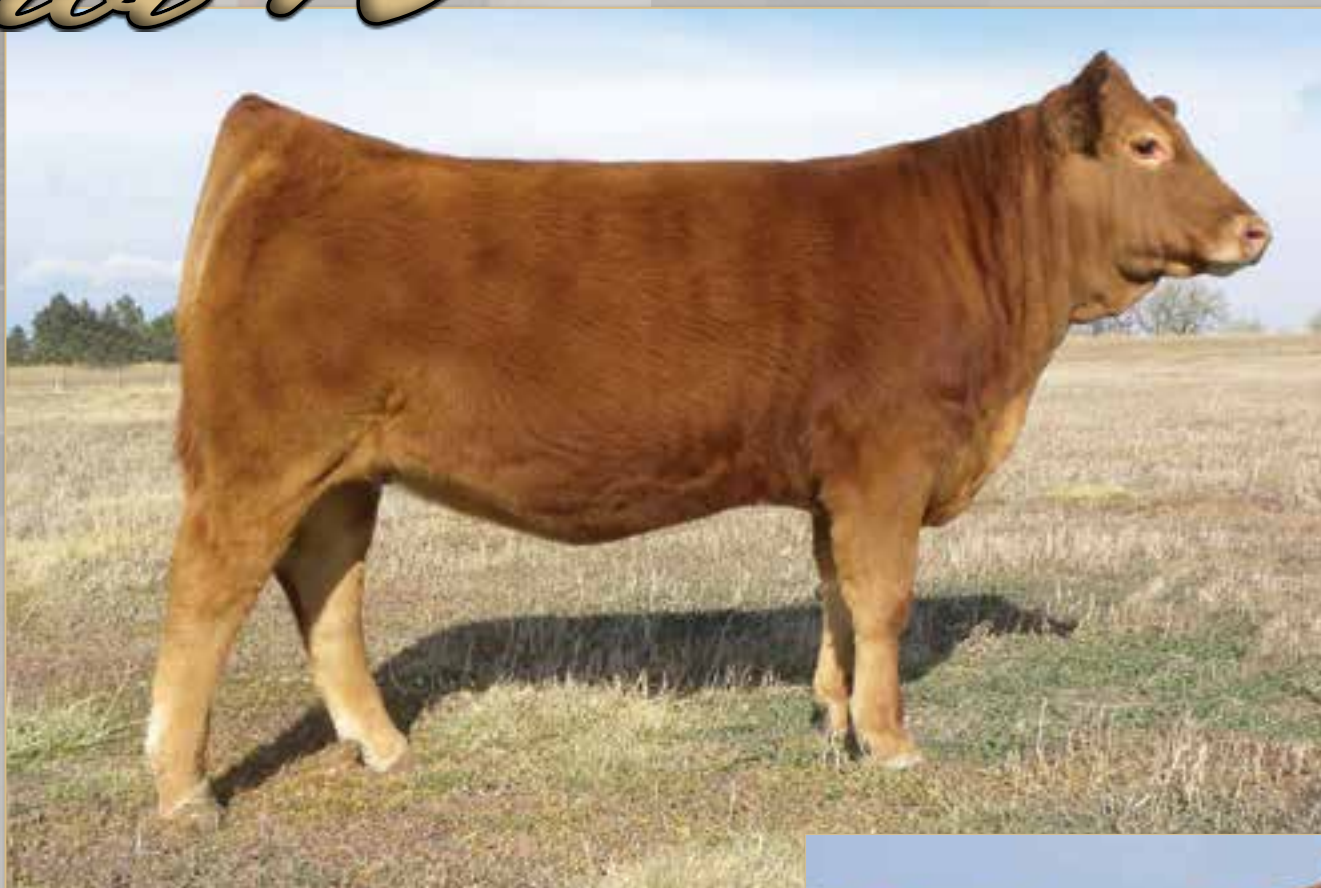
50%GV 50%AN Balancer Cow	Red	Homozygous Polled										
3/19/2014	DLW 4505B	1296217										
CTR SANDMAN 6523S		SITZ TRADITION RLS 8702										
CTR CTR SANDHILLS 0065X		CTR 198L										
CTR 7281T		CTR GOOD NIGHT 4743P										
EXAR PAY STUB 40 5S		CTR MISS SANDHILLS 5108R										
BEA 7200T		EXAR LUTTON 1831										
BEA 9094J		ROLLIN ROCK BLACKBIRD 7537										
		BEA 7089G										
		DKS MISS SYMBOL B24										
CED	BW	WW	YW	MK	TM	CEM	YG	CW	REA	MB	FT	FPI
12	1.6	71	105	18	54	9	-0.39	34	0.47	0.17	-0.01	74.35

Genomic Enhanced EPDs.



# lot 16

# PLA SERENDIPITY 401B



PLA SERENDIPITY 401B, SELLS AS LOT 16



VER MISS PLD PRISSY TWO 252G, DAM OF LOT 16

Purebred Gelbvieh Cow      Red      Heterozygous Polled  
2/5/2014      PLA 401B      1291945

JDPD ROLEX 151M      HAD SLEEP TIGHT ET  
JDPD ASTRO 407S      VTG VISTA MS FREEDOM 0151K  
HAD PRINCESS OF ALOT 407P      HAD LANCELOT 795L  
JRI PLD GRAND PRIX ET      HAD 140 L  
VER MISS PLD PRISSY TWO 252G      ATM TEJAS ROLLS ROYCH 868  
VER 165B      JRI MS PLD PREFERENCE 285A5  
VER 165Z      KCF BENNETT HORIZON

CED	BW	WW	YW	MK	TM	CEM	YG	CW	REA	MB	FT	FPI
6	1.9	69	96	39	74	9	-0.45	29	0.12	-0.35	-0.07	60.05

Genomic Enhanced EPDs.

Serendipity comes from one of the great purebred cow families in the breed. Her dam Prissy 252G was one of the foundation females for purebred and balancer genetics in the Verner Farms program that produced many females and herd sires working in seedstock programs throughout the United States. When it comes to longevity, consistency in production and functional genetics that rise to the top in any program, this maternal cow family does it all. She is sired by Astro that has taken red genetics by storm over the past few years. We are really excited by the potential of the young heifer we are offering in the national sale.

Plateau Gelbvieh  
Peetz, Colorado  
Jim Roelle 970-520-1224



# HILLTOP FARMS PICK

## lot 17



FEMALE BRED AND SHOWN BY HILLTOP FARMS

Hilltop Farms is offering pick of their 2013 production bred heifers or 2014 production open heifers on the ranch that carry the Hilltop Farms prefix. Hilltop Farms bred and exhibited the 2013 American Royal Reserve Grand Champion Balancer Female. Also bred and exhibited a class winner at the 2014 American Royal. The Hilltop Farms bulls in our Genetic Power bull sale were very strong averaging \$4500. Many heifers in this pick are half sibs to our Genetic Power bulls. Quality is deep in the bred and open heifers offered in this pick as there are several heifers that are half sisters to the 2013 American Royal Reserve Champion Balancer Female. Hilltop Farms has been building a strong cow base over the past few years with high quality females purchased from many of the top programs in the breed. There are approximately 30 Gelbvieh and Balancer bred heifers and 30 Gelbvieh and Balancer open heifers in this pick. Most of the opens and bred heifers are sired by VRT Lazy TV Sam, JRI Enhancer 53U21, SAV Final Answer 0035, MYTTY In Focus, DLW 404X, JKGF Black Impression X015, JKGF W002 ET, CIRS Decade 278U and BNC Mr Hojer Y062. Pick must be made by March 15, 2015.



2013 AMERICAN ROYAL RESERVE GRAND CHAMPION BALANCER® FEMALE,  
BRED AND SHOWN BY HILLTOP FARMS

Hilltop Farms  
Asbury, Missouri  
Elmer McWilliams 417-529-0081



# *lot 18* BAR ARROW CATTLE CO PICK OF 2014 BULL OR HEIFER CROP



2014 NATIONAL CHAMPION PEN OF FIVE BULL

Bar Arrow Cattle Company has more than 25 years dedication to the Gelbvieh breed and junior Gelbvieh programs. Bar Arrow Cattle Company is offering the pick of their 2014 bull or heifer calf crop. In 2014, Bar Arrow exhibited the National Champion Pen of 5 Balancer bulls in Denver with several of these bulls selling to purebred seedstock programs. Bar Arrow Cattle Co has exhibited Champion or Reserve Champion bulls in Denver for 9 continuous years. Quality is strong throughout the bulls and heifers. This offering includes Gelbvieh or Balancer with many to choose from in Denver or at the ranch. Bar Arrow Cattle Company is a cow/calf operation that produces registered Gelbvieh and Balancer as well as commercial cattle. With a strong female base, the buyer has many options with this pick from a breeding program that ranks annually in the top 20 for registrations in the breed.

Bar Arrow Cattle Company  
Phillipsburg, Kansas  
Stuart Jarvis 785-543-8120



# THORSTENSON'S LAZY TV RANCH

## GELBVIEW PICK

# lot 19



Offering pick of the entire Lazy TV Ranch bred heifers and open heifers at the ranch in Selby, South Dakota. The selection group include 90 bred balancer heifers and 250 spring open balancer heifers. Our program is at the forefront of Feed Efficiency testing with the majority of the bred heifers being tested and all open heifers will complete their Feed Efficiency test in late March. Sires of bred heifers include JRI Trump 27013B, Lazy TV X Factor, EGL Roundup X777, Lazy TV First Watch Y421, Ten X. Open heifers sired by Connealy Calvary, Woodhill Calvary U280-20, BEA Common Sense 200Z, BEA Secret Brand 2100ZET, SKYM Foreman 2002Z.

These groups of bred heifers and open heifers are the future of our program with Feed Efficiency, maternal strength, carcass data and performance. The females at Lazy TV Ranch are the backbone of our operation that produces many bulls used in the both the purebred and commercial sectors of the beef industry.

Pick must be made by April 1, 2015. The open heifers will be complete with Feed Efficiency test end of March.

Thorstenson's Lazy TV Ranch  
Selby, South Dakota  
Vaughn Thorstenson 605-848-0421





# lot 20

## J AND K FARMS PICK OF SPRING OR FALL BRED HEIFERS



JKGF FUTURE INVESTMENT X037

J and K Farms has been breeding Gelbvieh and Balancer Cattle since 1989. No female has been sold out of J and K Farms for the past 3 years. The female factory here has produced several bulls the past few years that have sold to purebred and commercial programs throughout the United States. Many of the bred heifers offered in this pick are maternal sisters and come from the same cow families as the AI sires produced in our operation. Sires such as JKGf Future Investment X037, JKGf Reflex X4, JKGf Y53, JKGf Y353, JKGf Z353 represent just a few of the AI sires and purebred herd sires working in the Gelbvieh Breed.

This choice pick offers 48 bred heifers bred here at J and K Farms. 28 spring bred heifers to start calving in February and sired by the following AI sires HYEK 3960N Black Impact, Lazy TV Beech Jet R052ET, DCSF Post Rock Granite 200P2, JKGf Reflex X4, JKGf Black ImpressionX015. 20 fall bred heifers to start calving September 1, 2015 sired by JKGf Reflex X4, EXAR Upshot 0562B, JKGf W002 and CMFS 1541Y.

Pick to be made by March 15, 2015.

J & K Farms, Ava, Illinois  
Jerry and Karen Wilson 618-521-8620



JKGF REFLEX X4



JKGF Y53





Mitchell Marketing Service  
2262 C Avenue, Gladbrook, IA 50635



# FIRST CLASS